

OHIO DIVISION PARKERSBURG SUBDIVISION

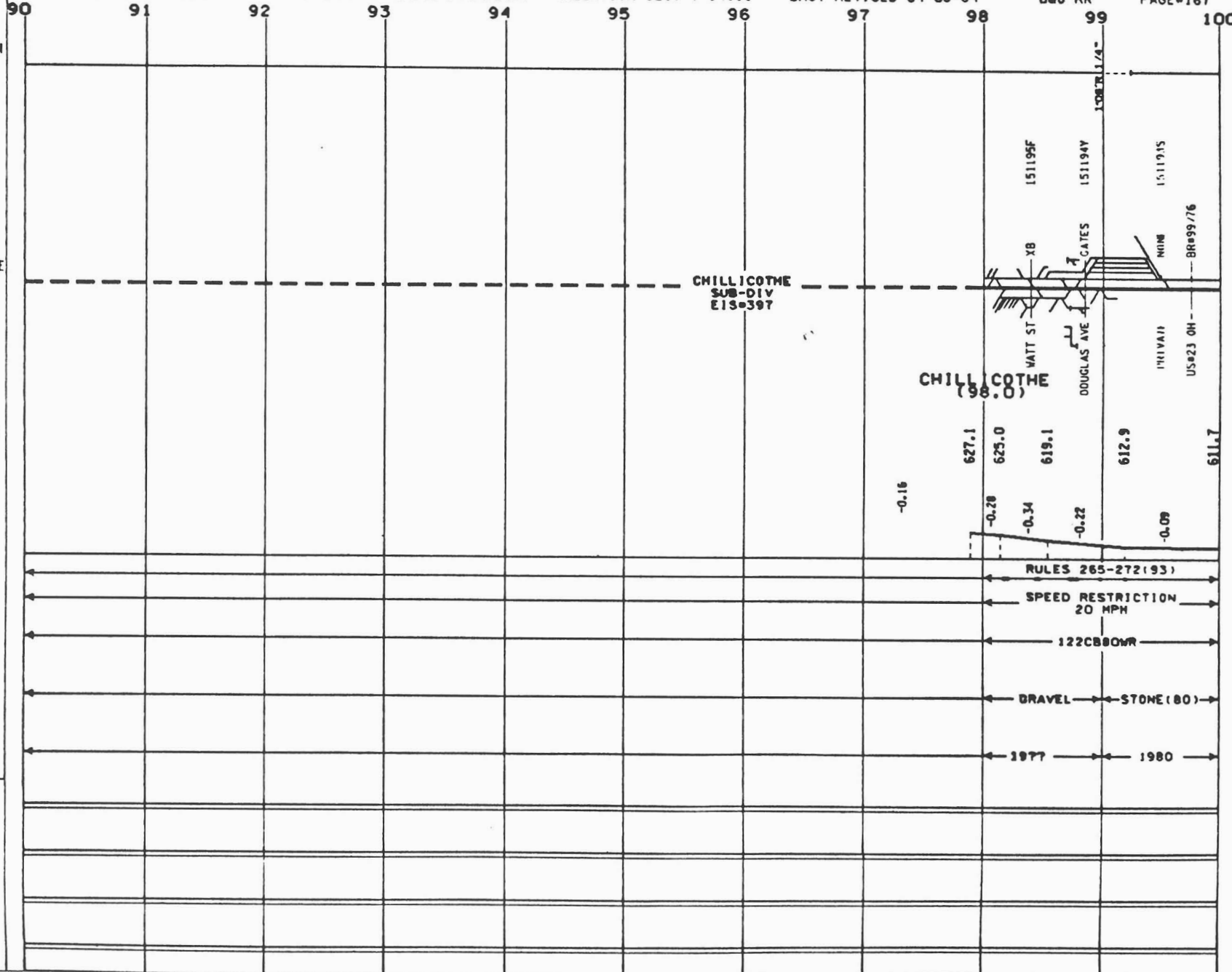
VALUATION SECT V-145.1

LAST REVISED 04-05-84

B&O RR

PAGE#167

MILE POST



- ALIGNMENT-PLAN**
- SUPERELEVATION
 - DEG OF CURVE
 - DOT CROSSING NUMBER
 - CROSSING TCD/BRIDGE NO
 - FL=FLASHING LIGHTS
 - GATES-GATES XB=CROSS BUCK
 - B-BELLS FM=FLAG MAN
 - + BR=XING BR OVER RR
 - + BR=RR BR OVER XING
 - BRIDGE TYPES
 - TRE=TIMBER TRESTLE
 - PG=PLATE GIRDER BM=BEAM
 - MOVE=MOVABLE RC=CONCRETE
 - CULV=CULVERT TRUS=TRUSS
 - DEFECTIVE EQUIP DET - (⊖)
 - HOT BOX DET - (⊕)
 - YARD LIMIT - (⊖)
 - SIGNALS
 - BRIDGE { GR MAST T
 - CANTILEVER BR }
 - SEMAPHORE ○ DWARF T

PROFILE—PERCENT OF GRADE

ELEVATION

INTERLOCKING

- HAND OP = ○
- POWER SW = ○ PS
- ELECT LOCK = ○ EL
- REMOTE=RI
- AUTO = A:
- LOCAL=L:
- SS

OPERATING RULES

MAX AUTH SPEED

RAIL

SURFACING

TIES

PROGRAM-EIS #397

RAIL

SURFACING

TIES

OTHER

CHILLICOTHE (98.0)

CHILLICOTHE SUB-DIV E13=397

RULES 265-272(93)

SPEED RESTRICTION 20 MPH

122CB&OVR

GRAVEL STONE(80)

1977 1980

OHIO DIVISION PARKERSBURG SUBDIVISION

VALUATION SECT V 1 1 LAST EVI: D 04-05-84 B&O RR PAGE=168

MILE POST
ALIGNMENT-PLAN
SUPERELEVATION
DEG OF CURVE

DOT CROSSING NUMBER
CROSSING TCD/BRIDGE NO
FL=FLASHING LIGHTS
GATES=GATES XB=CROSS BUCK
B=BELLS FM=FLAG MAN
BR=BR BR OVER RR
BR=RR BR OVER KING
BRIDGE TYPES
TRES=TIMBER TRESTLE
PG=PLATE GIRDER BM=BEAM
MOVE=MOVABLE RC=CONCRETE
CULV=CULVERT TRUS=TRUSS
DEFECTIVE EQUIP DET
HOT BOX DET
YARD LIMIT
SIGNALS
BRIDGE CR NAST
CANTILEVER BR
SEMAPHORE DWARF

PROFILE-PERCENT OF GRADE

ELEVATION
INTERLOCKING
HAND OP = REMOTE=R:
POWER SM = PS AUTO =A:
ELECT LOCK = EL LOCAL=L:
SPRING SV = SS

OPERATING RULES
MAX AUTH SPEED

RAIL

SURFACING

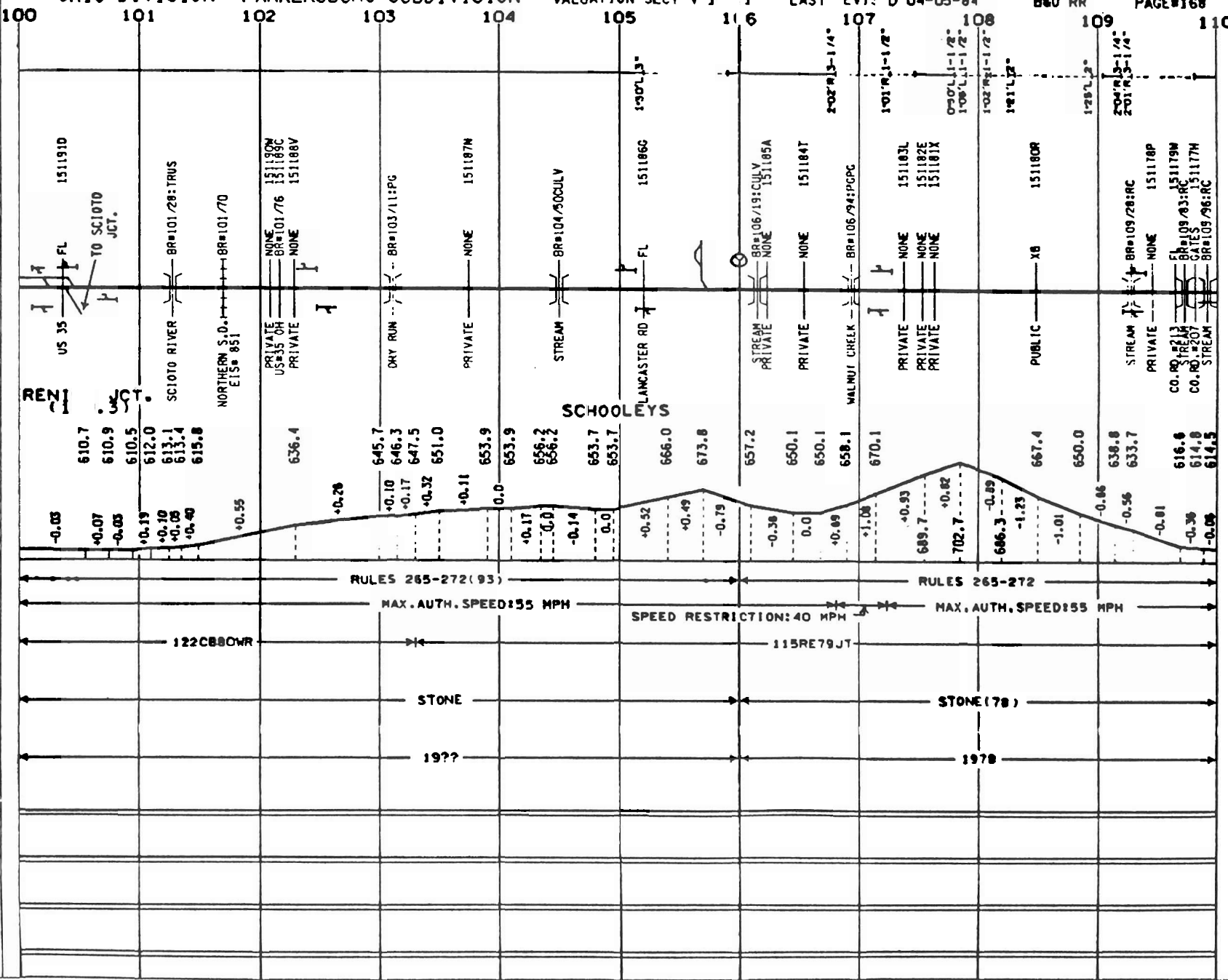
TIES

PROGRAM-EIS #397
RAIL

SURFACING

TIES

OTHER



MILE POST
 V — E
 S — N

ALIGNMENT PLAN
 SUPERELEVATION
 DEG OF CURVE

DOT CROSSING NUMBER
 CROSSING TCD BRIDGE NO
 FL-FLASHING LIGHTS
 GATES-GATES XB-CROSS BUCK
 B-BELLS FM-FLAG MAN
 BR=HING BR OVER RR
 * BR=RR BR OVER XING
 BRIDGE TYPES
 TRS-TIMBER TRUSTLE
 PG-PLATE GIRDER BM-BEAM
 MOVE-MOVABLE RC-CONCRETE
 CULV-CULVERT TRUS-TRUSS
 DEFECTIVE EQUIP DET
 HOT BOX DET
 YARD LIMIT
 SIGNALS
 BRIDGE GR MAST
 CANTILEVER BR
 SENAPHORE DWARF

PROFILE—PERCENT OF GRADE

ELEVATION

INTERLOCKING
 HAND OP = . REMOTE=R:
 POWER SW = . PS AUTO =A:
 ELECT LOCK = . EL LOCAL=L:
 SPRING SW = . SS

OPERATING RULES
 MAX AUTH SPEED

RAIL

SURFACING

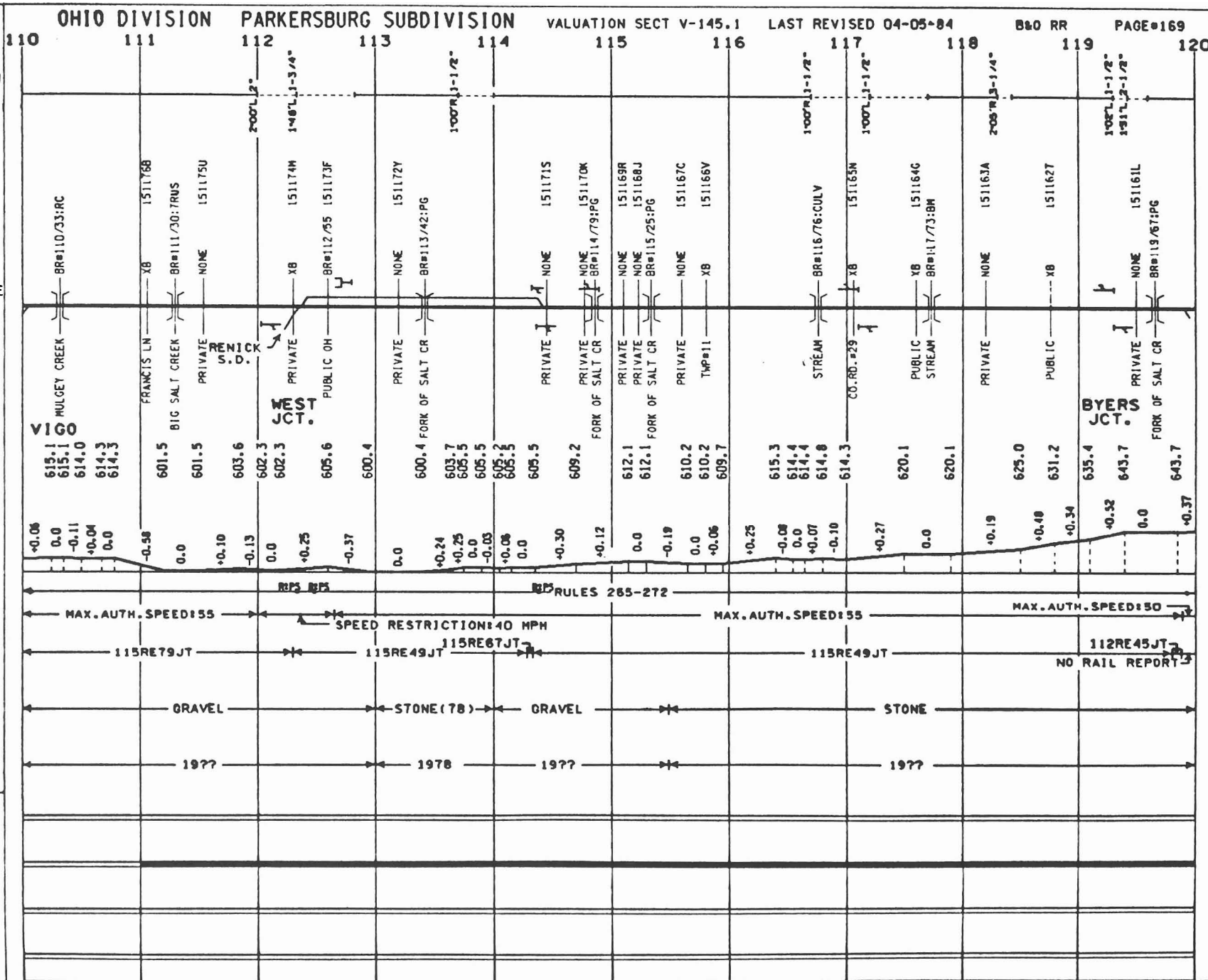
TIES

PROGRAM-EIS #397
 RAIL

SURFACING

TIES

OTHER



MILE POST

ALIGNMENT PLAN

PROFILE - PERCENT OF GRADE

ELEVATION

INTERLOCKING

OPERATING RULES

MAX AUTH SPEED

RAIL

SURFACING

TIES

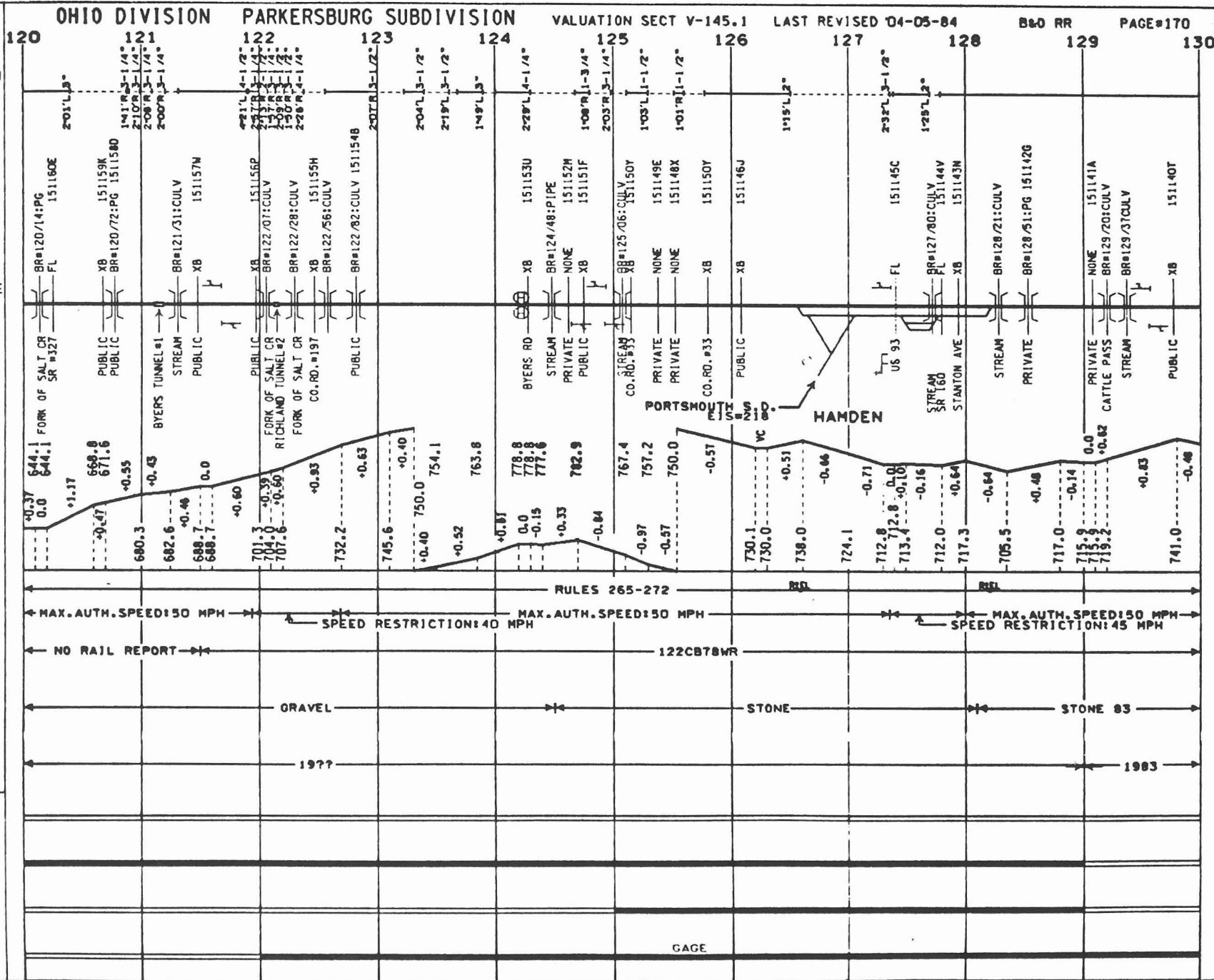
PROGRAM-EIS #397

RAIL

SURFACING

TIES

OTHER



MILE POST
 N
 W E
 S

ALIGNMENT- SUPERELEVATION
 PLAN DEG OF CURVE

DOT CROSSING NUMBER
 CROSSING TCD / BRIDGE NO
 FL=FLASHING LIGHTS
 GATES=GATES XB=CROSS BUCK
 B=BELLS FM=FLAG MAN
 BR=RR BR OVER RR
 BR=RR BR OVER XING
 BRIDGE TYPES
 TRS=TIMBER TRESTLE
 PG=PLATE GIRDER BM=BEAM
 MOVE=MOVABLE RC=CONCRETE
 CULV=CULVERT TRUS=TRUSS
 DEFECTIVE EQUIP DET
 HOT BOX DET
 YARD LIMIT
 SIGNALS
 BRIDGE GR MAST
 CANTILEVER BR
 SEMAPHORE DWARF

PROFILE-PERCENT OF GRADE

ELEVATION

INTERLOCKING
 HAND OP = PS REMOTE=R:
 POWER SM = PS AUTO = A:
 ELECT LOCK = EL LOCAL = L:
 SPRING SW = SS

OPERATING RULES
 MAX AUTH SPEED

RAIL

SURFACING

TIES

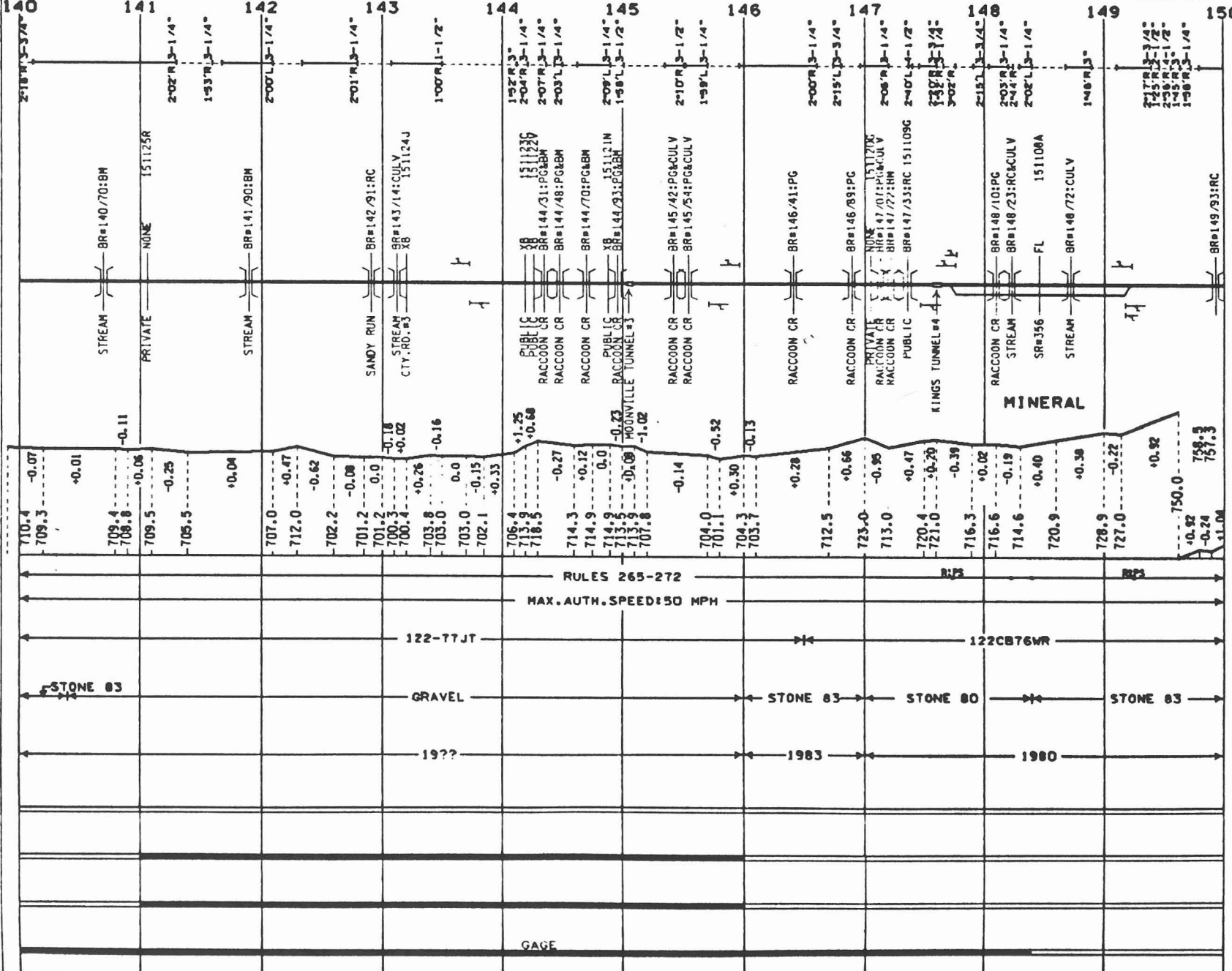
PROGRAM-EIS #397
 RAIL

SURFACING

TIES

OTHER

OHIO DIVISION PARKERSBURG SUBDIVISION VALUATION SECT V-145.1 LAST REVISED 04-05-84 B&O RR PAGE#172





- ALIGNMENT-PLAN**
- DOT CROSSING NUMBER
 - CROSSING TCD / BRIDGE NO
 - FL=FLASHING LIGHTS
 - GATES=GATES XB=CROSS BUCK
 - B=BELLS FM=FLAG MAN
 - BR=RR BR OVER RR
 - BR=RR BR OVER XING
 - BRIDGE TYPES: TRES=TIMBER TRESTLE, PG=PLATE GIRDER, BM=BEAM, HOVE=MOVABLE, RC=CONCRETE, CULV=CULVERT, TRUS=TRUSS
 - DEFECTIVE EQUIP DET
 - HOT BOX DET
 - YARD LIMIT
 - SIGNALS: BRIDGE, GR MAST, CANTILEVER BR, SEMAPHORE, DVARF

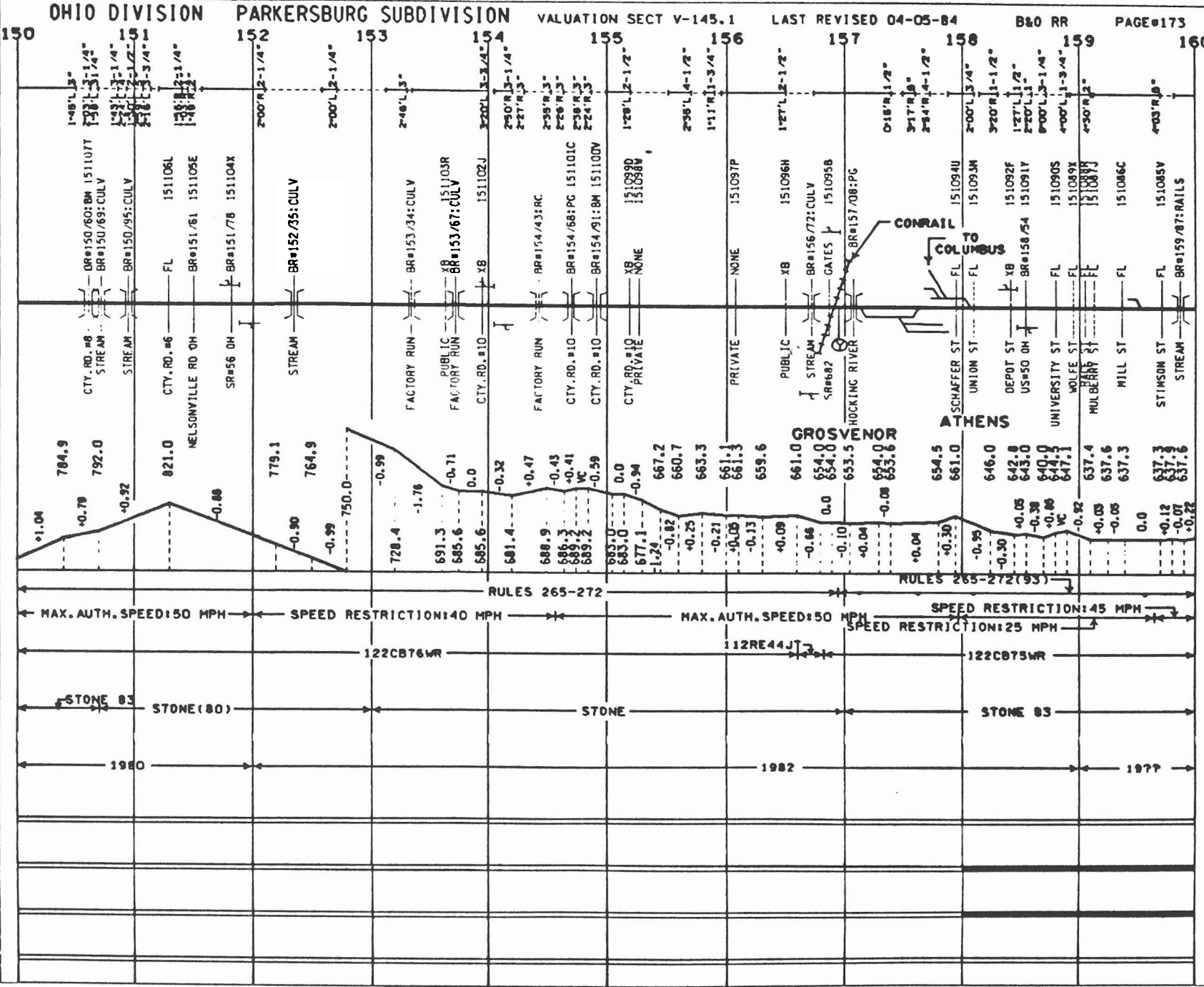
- PROFILE-PERCENT OF GRADE**
- ELEVATION**
- INTERLOCKING**
- HAND OP =
 - POWER SW = PS
 - ELECT LOCK = EL
 - SPRING SW = SS
 - REMOTE-R =
 - AUTO -A =
 - LOCAL -L =

- OPERATING RULES**
- MAX AUTH SPEED**

- RAIL**
- SURFACING**
- TIES**

PROGRAM-EIS #397 RAIL

- SURFACING**
- TIES**
- OTHER**



MILE POST

ALIGNMENT PLAN

DOT CROSSING NUMBER

CROSSING 700/BRIDGE NO

FL=FLASHING LIGHTS

GATES-GATES XB=CROSS BUCK

B=BELLS FM=FLAG MAN

BR=XING BR OVER RR

BR=PR BR OVER XING

BRIDGE TYPES

TRE=TIMBER TRESTLE

PG=PLATE GIRDER BM=BEAM

MOVE=MOVABLE RC=CONCRETE

CULV=CULVERT TRUS=TRUSS

DEFECTIVE EQUIP DET

HOT BOX DET

YARD LIMIT

SIGNALS

BRIDGE GR MAST

CANTILEVER BR

SEMAPHORE DWARF

PROFILE - PERCENT OF GRADE

ELEVATION

INTERLOCKING

HAND OP = . REMOTE=RS

POWER SW = . PS AUTO =A:

ELECT LOCK = EL LOCAL=L:

SPRING SW = . SS

OPERATING RULES

MAX AUTH SPEED

RAIL

SURFACING

TIES

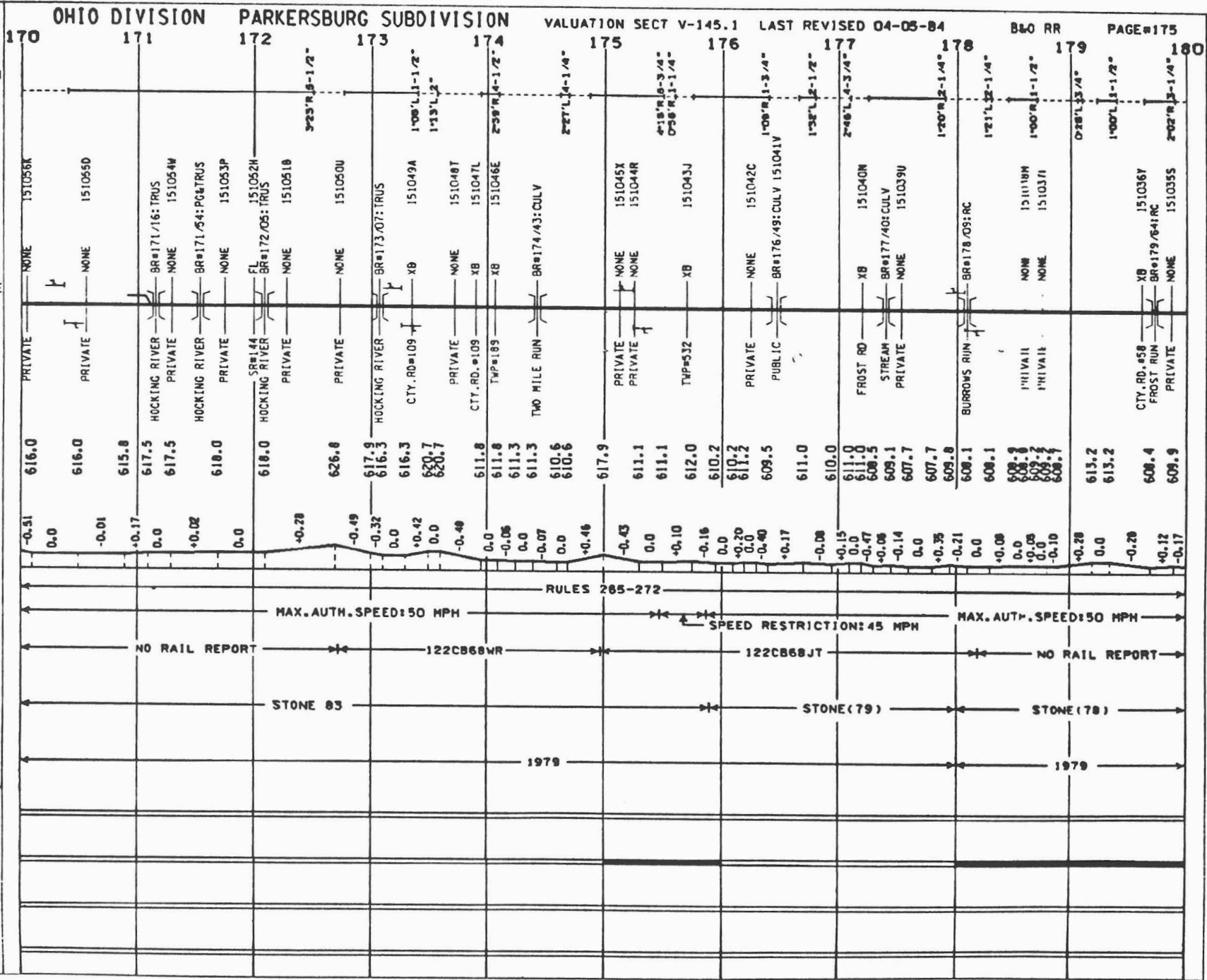
PROGRAM-EIS #397

RAIL

SURFACING

TIES

OTHER



OHIO DIVISION PARKERSBURG SUBDIVISION

VALUATION SECT V-145.1

LAST REVISED 04-05-84

B&O RR

PAGE 177

MILE POST



190 1 1 192 1 3 194

ALIGNMENT- SUPERELEVATION
PLAN DEG OF CURVE

- DOT CROSSING NUMBER
- CROSSING TCD/BRIDGE NO
- FL-FLASHING LIGHTS
- GATES-GATES XB-CROSS BUCK
- B-BELLS FM-FLAG MAN
- BR-XING BR OVER RR
- BR-RR BR OVER XING
- BRIDGE TYPES
- TRES-TIMBER TRESTLE
- PG-PLATE GIRDER BM-BEAM
- MOVE-MOVABLE RC-CONCRETE
- CULV-CULVERT TRUS-TRUSS
- DEFECTIVE EQUIP DET
- HOT BOX DET
- YARD LIMIT
- SIGNALS
- BRIDGE GR MAST
- CANTILEVER BR
- SEMAPHORE DWARF

PROFILE-PERCENT OF GRADE

ELEVATION

INTERLOCKING

- HAND OP = . REMOTE=RR
- POWER SW = . PS AUTO =A:
- ELECT LOCK = . EL LOCAL=L:
- SPRING SW = . SS

OPERATING RULES

MAX AUTH SPEED

RAIL

SURFACING

TIES

PROGRAM-EIS #397
RAIL

SURFACING

TIES

OTHER

