

- ALIGNMENT-PLAN**
- SUPERELEVATION
  - DEG OF CURVE
  - DOT CROSSING NO
  - CROSSING TCD/BRIDGE NO
  - FL=FLASHING LIGHTS
  - GATES=GATES XB=CROSS BUCK
  - B=BELLS FH=FLAG MAN
  - BR=BRING BR OVER RR
  - RR=RR BR OVER XING
  - BRIDGE TYPES
  - TRESTLE
  - TIMBER TRESTLE
  - PG=PLATE GIRDER
  - BM=BEAM
  - MOVE=MOVABLE
  - RC=CONCRETE
  - CULV=CULVERT
  - TRUS=TRUSS
  - DEFECTIVE EQUIP DET
  - HOT BOX DET
  - YARD LIMIT
  - SIGNALS
  - BRIDGE
  - GR MAST
  - CANTILEVER BR
  - SEMAPHORE
  - DWARF

PROFILE-PERCENT OF GRADE

ELEVATION

INTERLOCKING

- HAND OP =
- POWER SW = PS
- ELECT LOCK = EL
- SPRING SW = SS
- REMOTE=R
- AUTO=A
- LOCAL=L

SIG CONTROL

SPEED

RAIL

BALLAST

PROGRAM-EIS #428

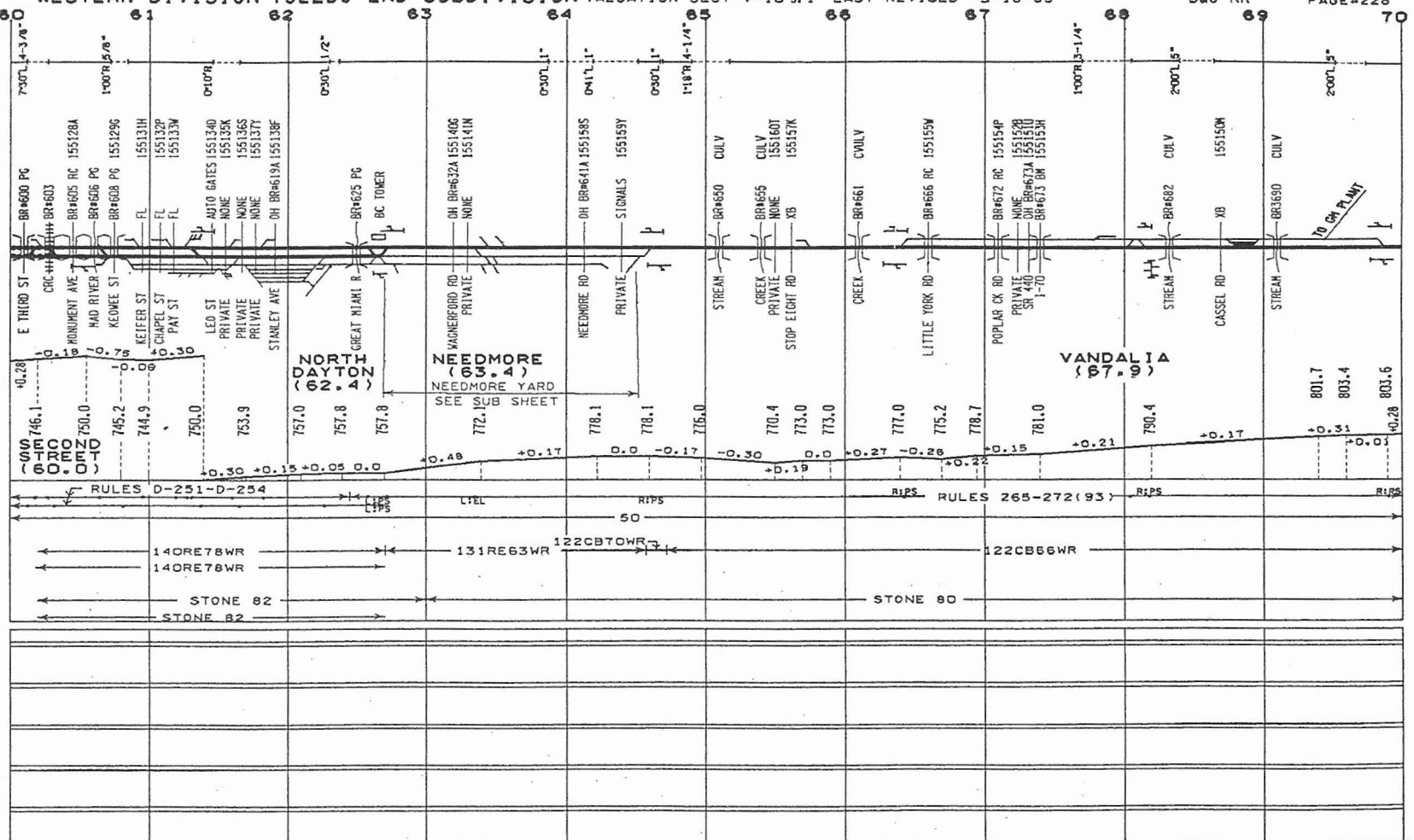
RAIL

BALLAST CLEAN

SURFACING

TIES

OTHER



MILE POST



ALIGNMENT-PLAN

- DOT CROSSING NO
- CROSSING TCD / BRIDGE NO
- FL=FLASHING LIGHTS
- GATES=GATES XB=CROSS BUCK
- B=BELLS FM=FLAG MAN
- BR=XING BR OVER RR
- BR=RR BR OVER XING
- BRIDGE TYPES
- TRES=TIMBER TRESTLE
- PG=PLATE GIRDER BM=BEAM
- MOVE=MOVABLE RC=CONCRETE
- CULV=CULVERT TRUS=TRUSS
- DEFECTIVE EQUIP DET
- HOT BOX DET
- YARD LIMIT
- SIGNALS
- BRIDGE GR MAST
- CANTILEVER BR
- SEMAPHORE DWARF

PROFILE—PERCENT OF GRADE

ELEVATION

- INTERLOCKING
- HAND OP = .
- POWER SW = . PS
- ELECT LOCK = . EL LOCAL = L
- SPRING SW = . SS
- REMOTE = R
- AUTO = A

SIG CONTROL

SPEED

RAIL

BALLAST

PROGRAM-EIS #428

RAIL

BALLAST CLEAN

SURFACING

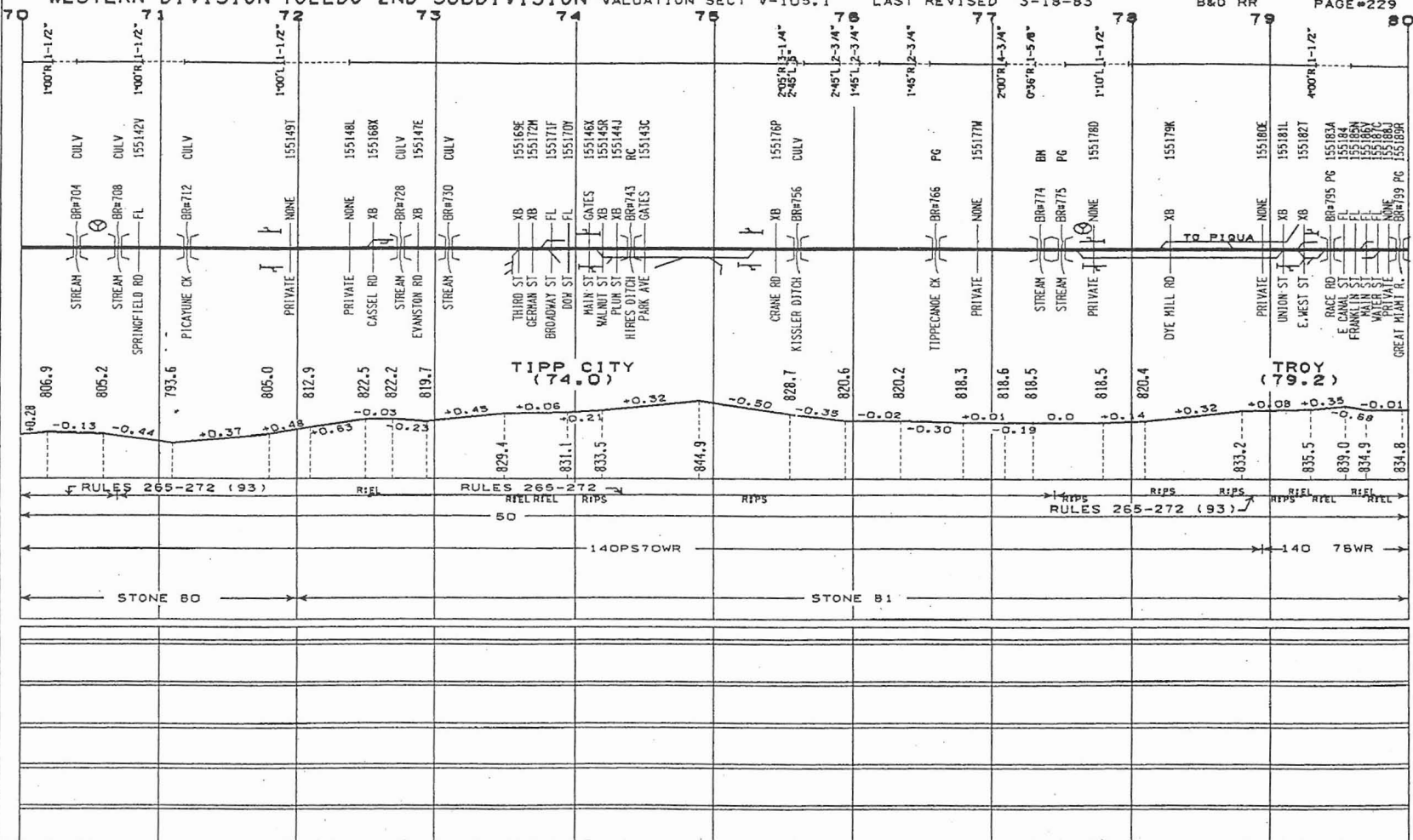
TIES

OTHER

WESTERN DIVISION TOLEDO 2ND SUBDIVISION VALUATION SECT V-105.1

LAST REVISED 3-18-83

B&O RR



MILE POST 5 W N E 1

ALIGNMENT SUP RELEVATION  
PLAN DEG OF CURVE

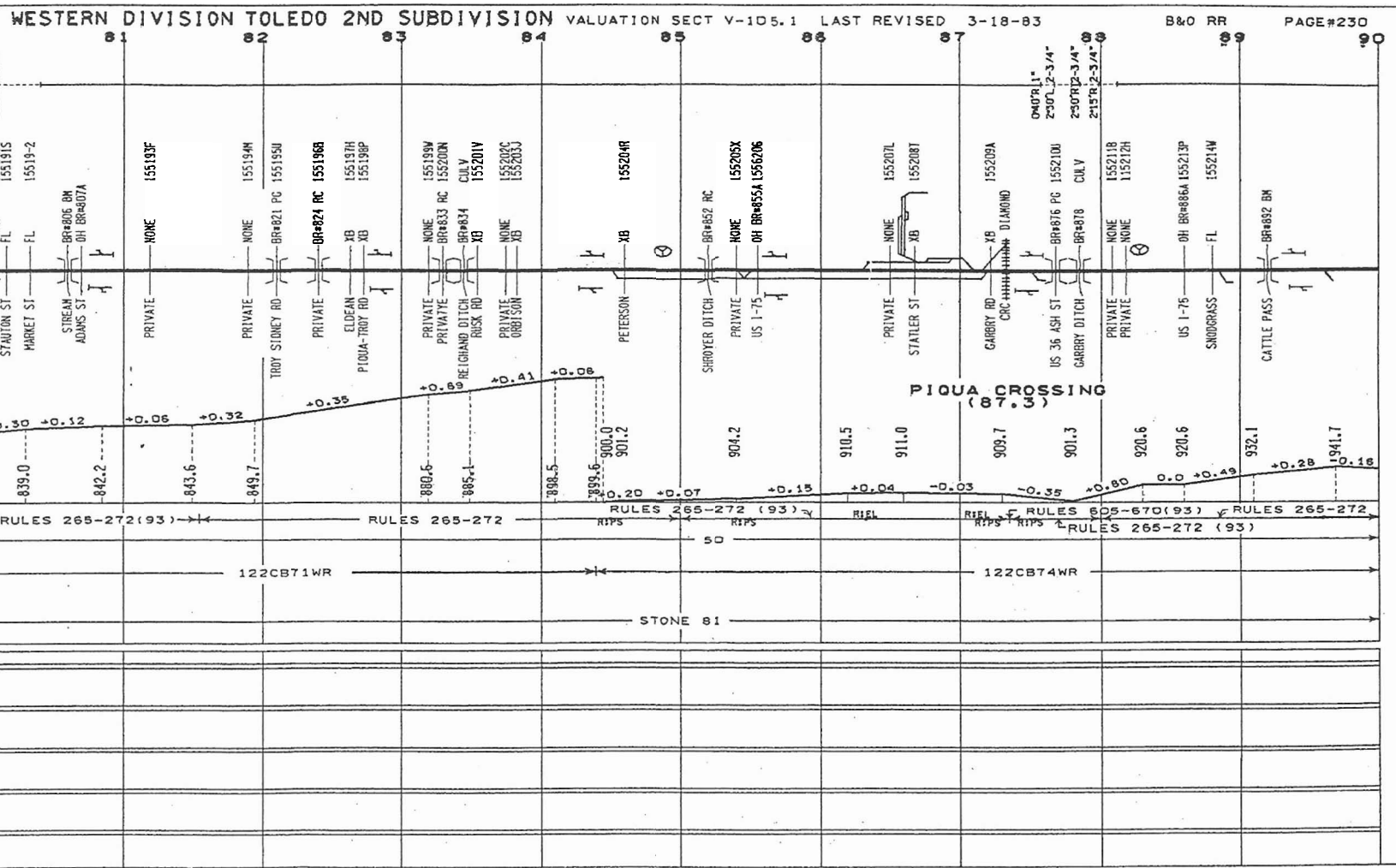
DOT CROSSING NO  
CROSSING TCD / BRIDGE NO  
FL=FLASHING LIGHTS  
GATES=GATES XB= CROSS BUCK  
B=BELLS FM=FLAG MAN  
BR= XING BR OVER RR  
BR=RR BR OVER XING  
BRIDGE TYPES  
TRES=TIMBER TRESTLE  
PG=PLATE GIRDER BM=BEAM  
MOVE=MOVABLE RC=CONCRETE  
CULV=CULVERT TRUS=TRUSS  
DEFECTIVE EQUIP DET  
HOT BOX DET  
YARD LIGHT  
SIGNALS  
BRIDGE GR HAST  
CANTILEVER BR  
SEMAPHORE DWARF

PROFILE - PERCENT OF GRADE

ELEVATION  
INTERLOCKING  
HAND OP = PS REMOTE=R:  
POWER SW = PS AUTO =A:  
ELECT LOCK = EL LOCAL=L:  
SPRING SW = SS

SIG CONTROL  
SPEED  
RAIL  
BALLAST

PROGRAM-EIS #428  
RAIL  
BALLAST CLEAN  
SURFACING  
TIES  
OTHER



MILE POST

ALIGNMENT - SUPERELEVATION  
PLAN  
DOT CROSSING NO  
CROSSING TCD/BRIDGE NO

FL=FLASHING LIGHTS  
GATES=GATES XB=CROSS BUCK  
B=BELLS FM=FLAG MAN

BRIDGE TYPES  
TRES=TIMBER TRESTLE  
PG=PLATE GIRDER BM=BEAM  
MOVE=MOVABLE RC=CONCRETE  
CULV=CULVERT TRUS=TRUSS

DEFECTIVE EQUIP DET  
HDT BOX DET  
YARD LIMIT  
SIGNALS  
BRIDGE GR MAST  
CANTILEVER BR  
SEMAPHORE DWARF

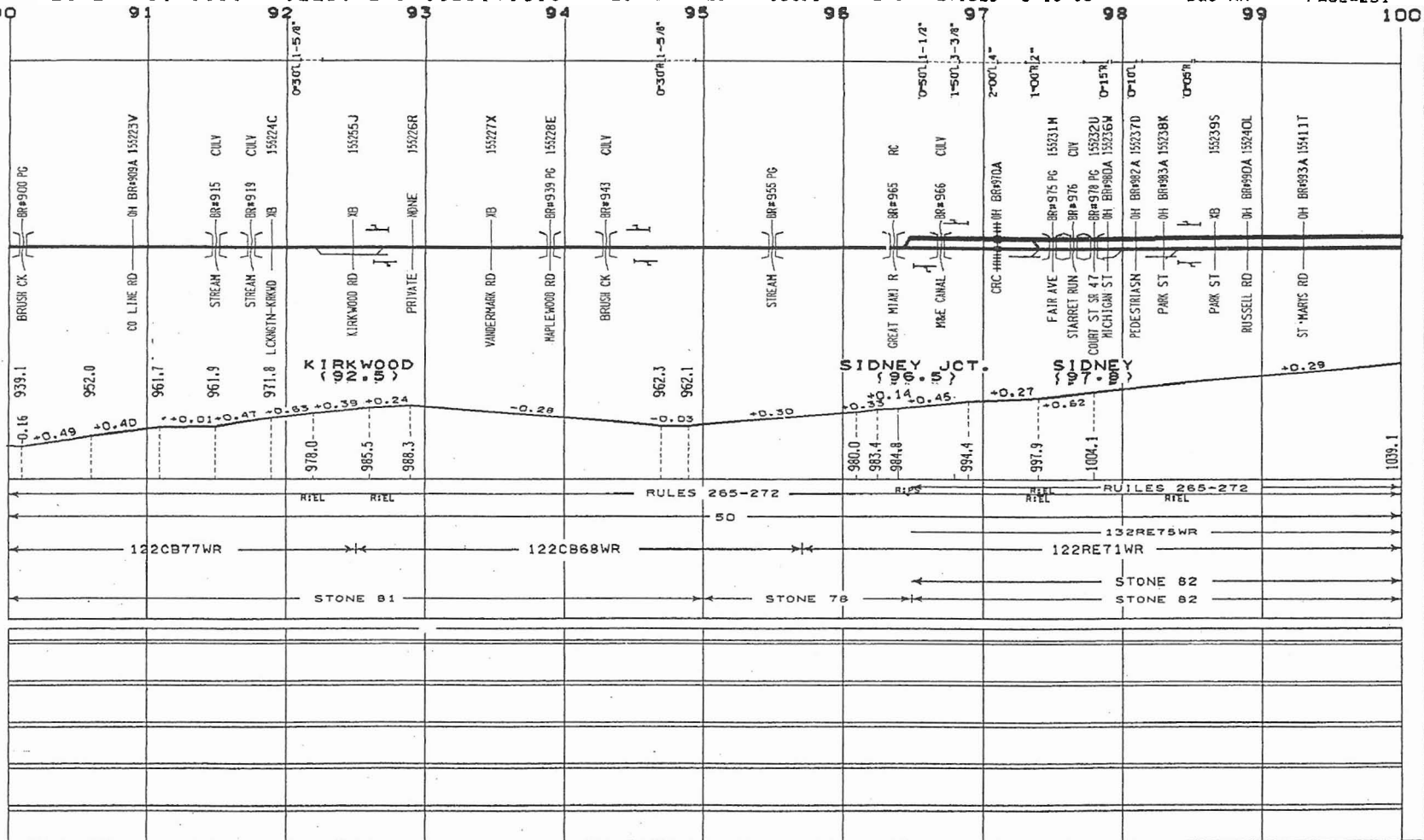
PROFILE - PERCENT OF GRADE

ELEVATION  
INTERLOCKING  
HAND OP = P5 REMOTE=R2  
POWER SW = A1 AUTO = A2  
ELECT LOCK = EL LOCAL=L1  
SPRING SW = SS

SIG CONTROL  
SPEED  
RAIL

BALLAST  
PROGRAM-E1S #428

BALLAST CLEAN  
SURFACING  
TIES  
OTHER



WESTERN DIVISION TOLEDO 2ND SUBDIVISION VALUATION SECT V-105.1 LAST REVISED 3-18-83

B&O RR

PAGE#232

MILE POST



100 101 102 103 104 105 106 107 108 109 110

ALIGNMENT - SUPERELEVATION

PLAN DEG OF CURVE

CROSSING TCD / BRIDGE NO

FL=FLASHING LIGHTS  
GATES=GATES XB=CROSS BUCK  
B=BELLS FH=FLAG MAN

BRIDGE TYPES  
PG=PLATE GIRDER BM=BEAM  
MOVE=MOVABLE RC=CONCRETE  
CULV=CULVERT TRUS=TRUSS

DEFECTIVE EQUIP DET  
HOT BOX DET  
YARD LIMIT  
SIGNALS

BRIDGE GR MAST  
CANTILEVER BR  
SEMAPHORE DWARF

PROFILE - PERCENT OF GRADE

ELEVATION

INTERLOCKING  
HAND OP = \* REMOTE=R:  
POWER SW = PS AUTO = A:  
ELECT LOCK = EL LOCAL = L:  
SPRING SW = S

SIG CONTROL

SPEED

RAIL

BALLAST

PROGRAM-EIS #428

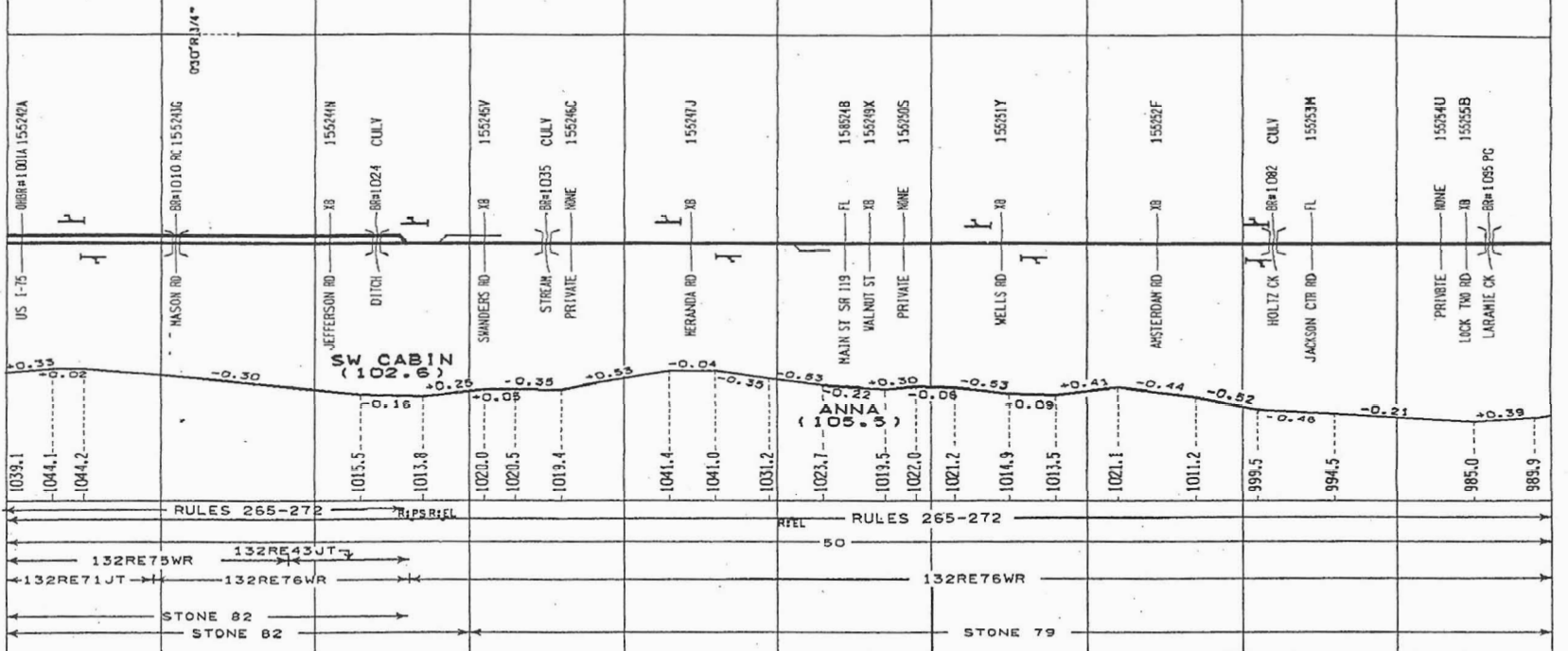
RAIL

BALLAST CLEAN

SURFACING

TIES

OTHER



MILE POST 
 N  
 S  
 E  
 W

ALIGNMENT - SUPERELEVATION  
 PLAN - DEG OF CURVE

DOT CROSSING NO  
 CROSSING TCD / BRIDGE NO  
 FL=FLASHING LIGHTS  
 GATES=GATES XB=CROSS BUCK  
 B=BELLS FM=FLAG MAN  
 BR=XING BR OVER RR  
 BR=RR BR OVER XING  
 BRIDGE TYPES  
 TRES=TIMBER TRESTLE  
 PG=PLATE GIRDER BM=BEAM  
 MOVE=MOVABLE RC=CONCRETE  
 CULV=CULVERT TRUS=TRUSS

DEFECTIVE EQUIP DET  
 HOT BOX DET  
 YARD LIMIT  
 SIGNALS  
 BRIDGE GR MAST  
 CANTILEVER BR  
 SEMAPHORE DWARF

PROFILE - PERCENT OF GRADE

ELEVATION

INTERLOCKING  
 HAND OP = PS REMOTE=R:  
 POWER SW = PS AUTO=A:  
 ELECT LOCK = EL LOCAL=L:  
 SPRING SW = SS

SIG CONTROL

SPEED

RAIL

BALLAST

PROGRAM-EIS #428

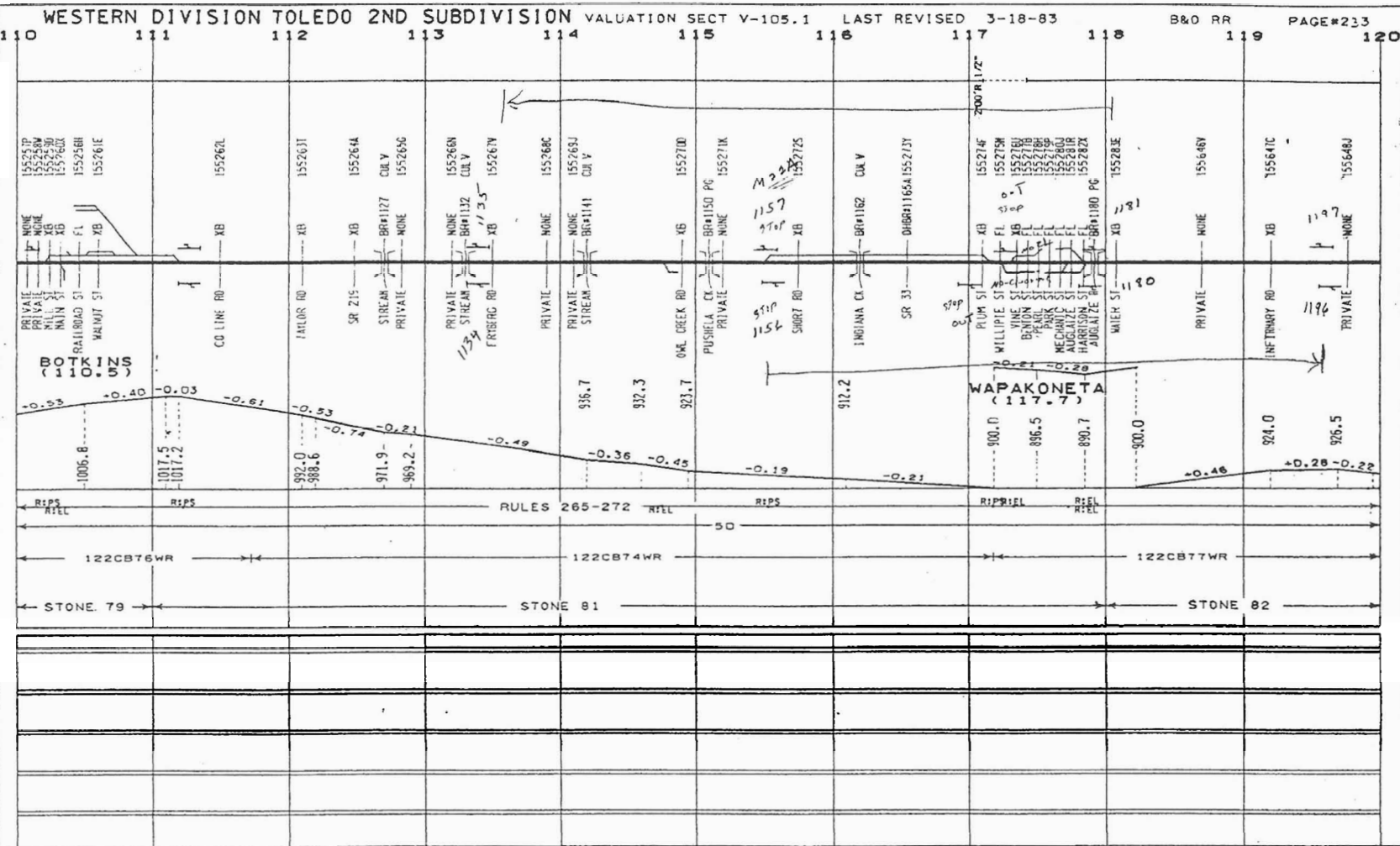
RAIL

BALLAST CLEAN

SURFACING

TIES

OTHER



WESTERN DIVISION TOLEDO 2ND SUBDIVISION VALUATION SECT V-105.1

LAST REVISED 3-18-83

B&O RR

PAGE#234

MILE POST



ALIGNMENT SUPERELEVATION

PLAN DEG OF CURVE

CROSSING TO BRIDGE NO

FL=FLASHING LIGHTS

GATES=GATES XB=CROSS BUCK

FM=FLAG MAN

BR=XING BR OVER RR

BR=RR BR OVER XING

BRIDGE TYPES

TREST=TIMBER TRESTLE

PG=PLATE GIRDER BM=BEAM

MOVE=MOVABLE RC=CONCRETE

CULV=CULVERT TRUS=TRUSS

DEFECTIVE EQUIP DET

HOT BOX DET

YARD LIMIT

SIGNALS

BRIDGE GR MAST

CANTILEVER BR

SEMAPHORE DWARF

PROFILE-PERCENT OF GRADE

ELEVATION

INTERLOCKING

HAND OP = REMOTE=R:

POWER SW = PS AUTO=A:

ELECT LOCK = EL LOCAL=L:

SPRING SW = SS

SIG CONTROL

SPEED

RAIL

BALLAST

PROGRAM-EIS #428

RAIL

BALLAST CLEAN

SURFACING

TIES

OTHER

