



- ALIGNMENT-PLAN**
- DOT CROSSING NUMBER
- CROSSING TO BRIDGE NO
 FL-FLASHING LIGHTS
 GATES-GATES XB-CROSS X
 B-BELLS FR-FLAG RA
- +—> BR-XING OR OVER
 —+—> BR-OR BR OVER X
- BRIDGE TYPES**
 TRES-TIMBER TRESTLE
 PS-PLATE GIRDER BR-BEAR
 RIVE-MOVABLE RC-CONCRETE
 CUL-CULVERT TRUS-TRUSS
- DEFECTIVE EQUIP DET
 HOT BOX DET
 YARD LIMIT
 SIGNALS
- BRIDGE } ON PAST
 CANTILEVER BR }
- SEMPHORE ○ DRAFF □

PROFILE—PERCENT OF GRADE

ELEVATION

INTERLOCKING
 HAND OP = . REMOTE-RT
 POWER SW = . PS AUTO = A
 ELECT LOCK = . EL LOCAL = L
 SPRING SW = . SS

OPERATING RULES

MAX AUTH SPEED

RAIL

SURFACING

TIES

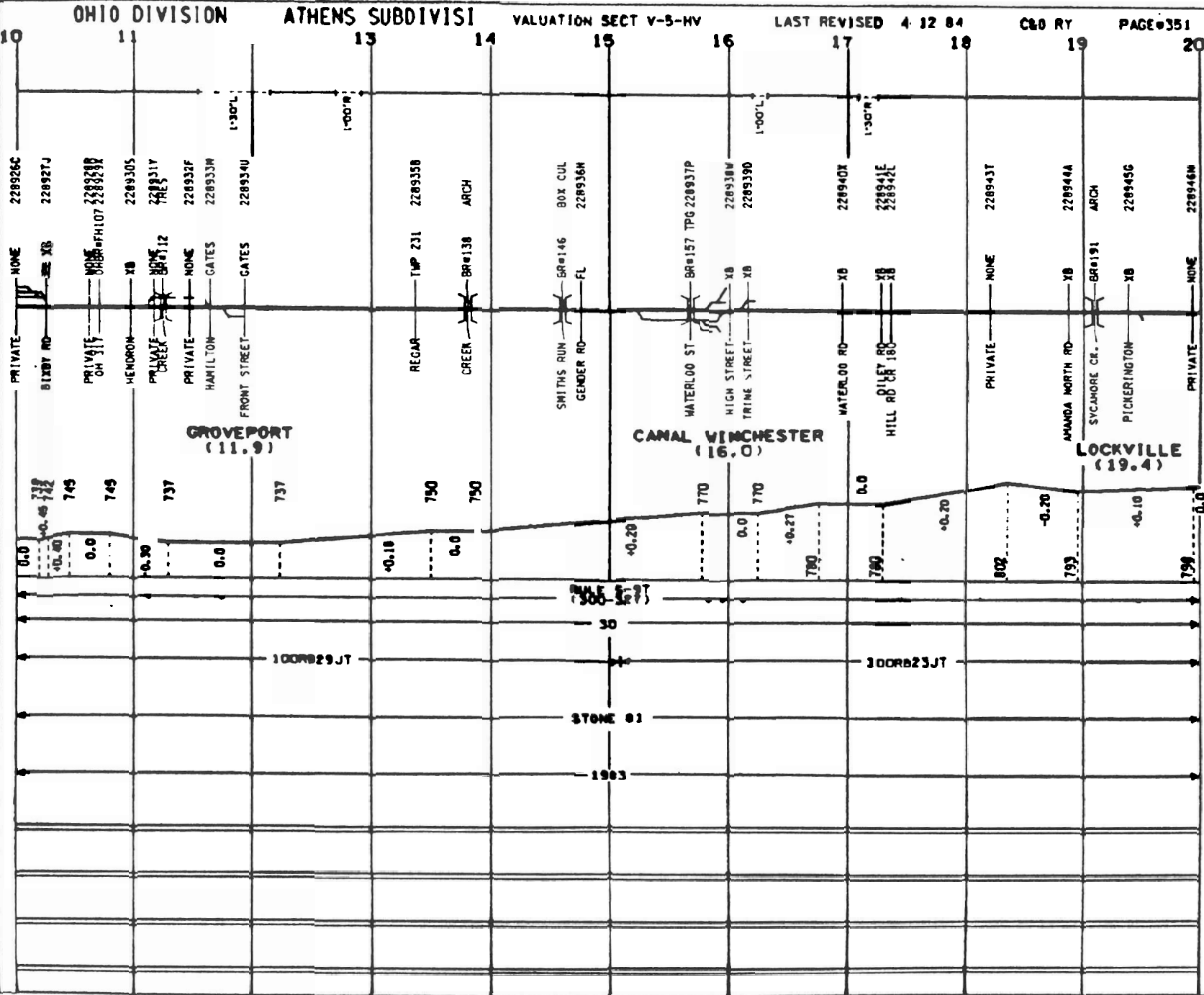
PROGRAM-EIS #857

RAIL

SURFACING

TIES

OTHER



OHIO DIVISION

ATHENS SUBDIVISION

VALUATION SECT V-5-MV

LAST REVISED 4-12 84

C&O RY

PAGE 35

MILE POST

20 21 22 23 24 25 26 27 28 29 30

ALIGNMENT - SUPERELEVATION
PLAN - DEG OF CURVE

DOT CROSSING NUMBER
CROSSING TCD/BRIDGE NO
FL-FLASHING LIGHTS
GATES-GATES XB-CROSS BACK
B-BELLS FM-FLAG MAN
+ → BRACKING OR OVER RR
- → BRACKING OR OVER KING
BRIDGE TYPES
TNS-TIMBER TRUSS
PS-PLATE GIRDER BPT-BEAM
NONE-MOVABLE PC-CONCRETE
CULV-CULVERT TRUS-TRUSS
DEFECTIVE EMBTP DET
HOT BOX DET
TAMP LIMIT
SIGNALS
BRIDGE OR MAST
CANTILEVER BR
SEMPHORE OR

PROFILE - PERCENT OF GRADE

ELEVATION

INTERLOCKING

WHD UP = 0
POWER SW = PS
ELECT LOCK = EL
SPRING SW = SS
RENOTE = R
AUTO = A
EL LOCAL = L

OPERATING RULES

MAX AUTH SPEED

RAIL

SURFACING

TIE

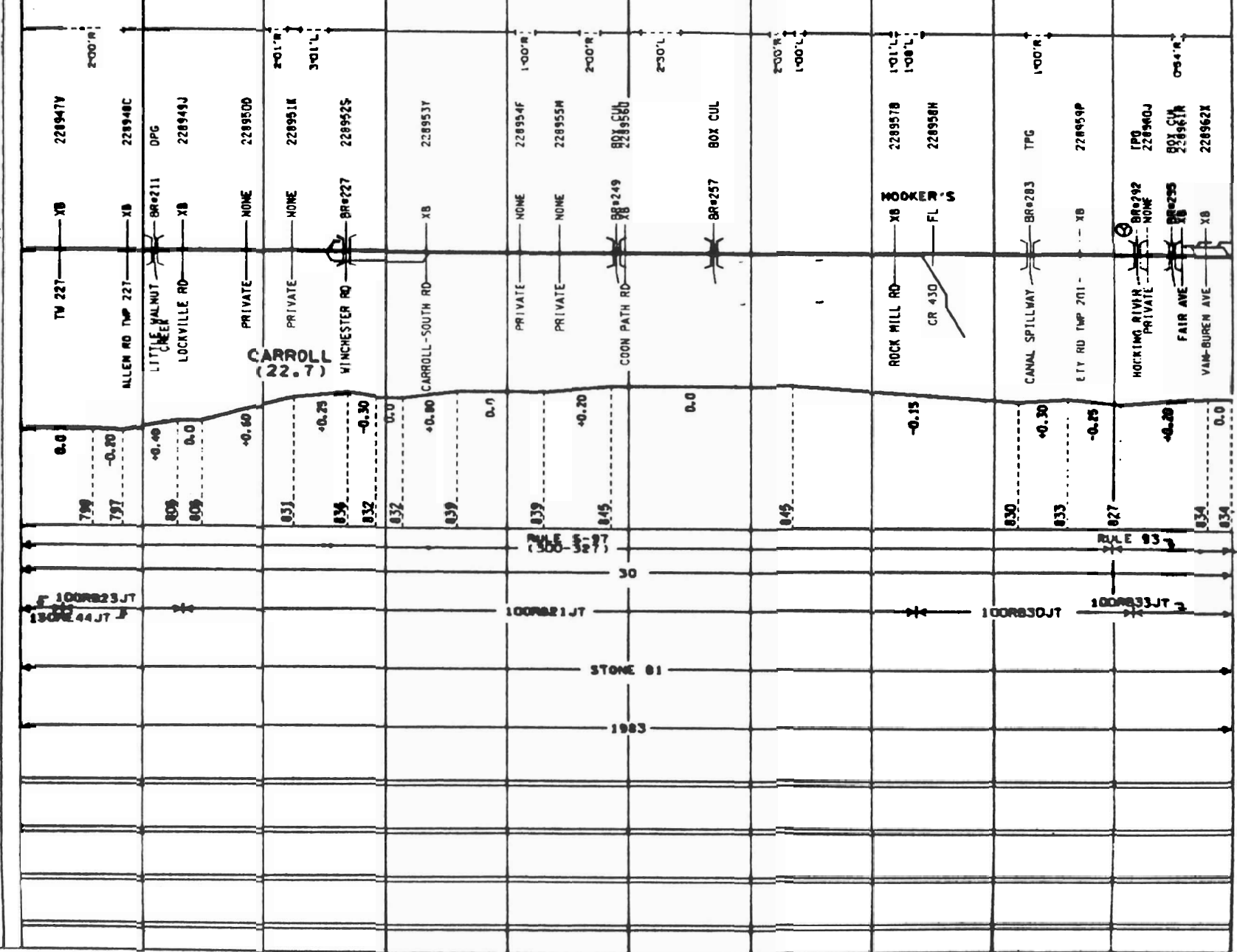
PROGRAM-EIS #857

RAIL

SURFACING

TIES

OTHER



OHIO DIVISION

ATHENS SUBDIVISION

VALUATION SECT Y-5-MV

LAST REVISED 4-12 84

CLO RY

PAGE#353

MILE POST
ALIGNMENT
PLAN

DOT CROSSING NUMBER
CROSSING TO BRIDGE NO
FL-FLASHING LIGHTS
GATES-GATES XB-CROSS BUCK
B-BELLS FH-FLAG MAN
BRIDGE TYPES
TRES-TIMBER TRESTLE
PS-PLATE GIRDER BR-BEAM
RDVE-ROADWAY RC-CONCRETE
CULV-CULVERT TRUS-TRUSS
DEFECTIVE EQUIP DET
NOT BOX DET
YARD LIMIT
SIGNALS
BRIDGE OR MAST
CANTILEVER BR
SEMPHORE OR DMRF

PROFILE - PERCENT OF GRADE

ELEVATION
INTERLOCKING
HAND OP = HEINTE=R:
POWER SW = PS AUTO =A:
ELECT LOCK = EL LOCAL =L:
SPRING SW = SS

OPERATING RULES
MAX AUTH SPEED
RAIL

SURFACING

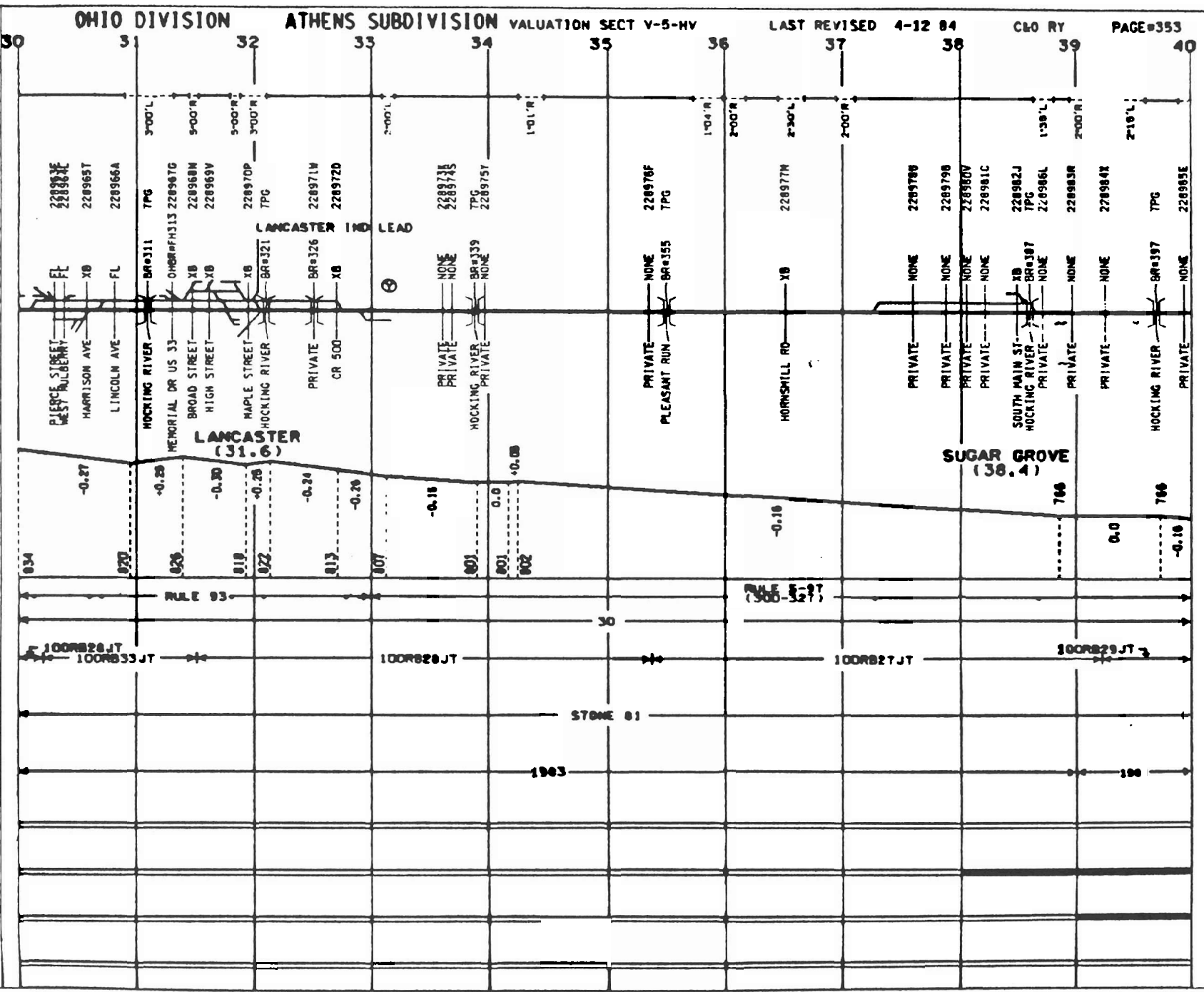
TIES

PROGRAM-EIS #857
RAIL

SURFACING

TIES

OTHER



OHIO DIVISION ATHENS SUBDIVISION VALUATION SECT V-5-HV

LAST REVISED 4-12-84

C&O RY

PAGE 354

MILE POST

40 41 42 43 44 45 46 47 48 49 50

ALIGNMENT-PLAN

- SUPERELEVATION
- REG OF CURVE
- DOT CROSSING NUMBER
- CROSSING TO BRIDGE NO
- FL-FLASHING LIGHTS
- BAES-GATES XB-CROSS BUCK
- D-BELLS FR-FLAG MAN
- BR-XING OR OVER BR
- BR-FR BR OVER XING
- BRIDGE TYPES
- TRES-TIMBER TRESTLE
- PS-PLATE GIRDER BR-BEAM
- NONE-MOVABLE RC-CONCRETE
- CULV-CULVERT TRUS-TRUSS
- DEFECTIVE EQUIP DET
- MOT WORK DET
- YARD LIMIT
- SIGNALS
- BRIDGE OR MAST
- CANTILEVER BR
- SEMPHORE OR DWRF

PROFILE-PERCENT OF GRADE

ELEVATION

- INTERLOCKING
- ROAD OP = 0
- RENOTE = R
- POWER SW = 0 PS
- AUTO = A
- ELECT LOCK = 0 EL LOCAL = L
- SPRING SW = 0 SS

OPERATING RULES

MAX AUTH SPEED

RAIL

SURFACING

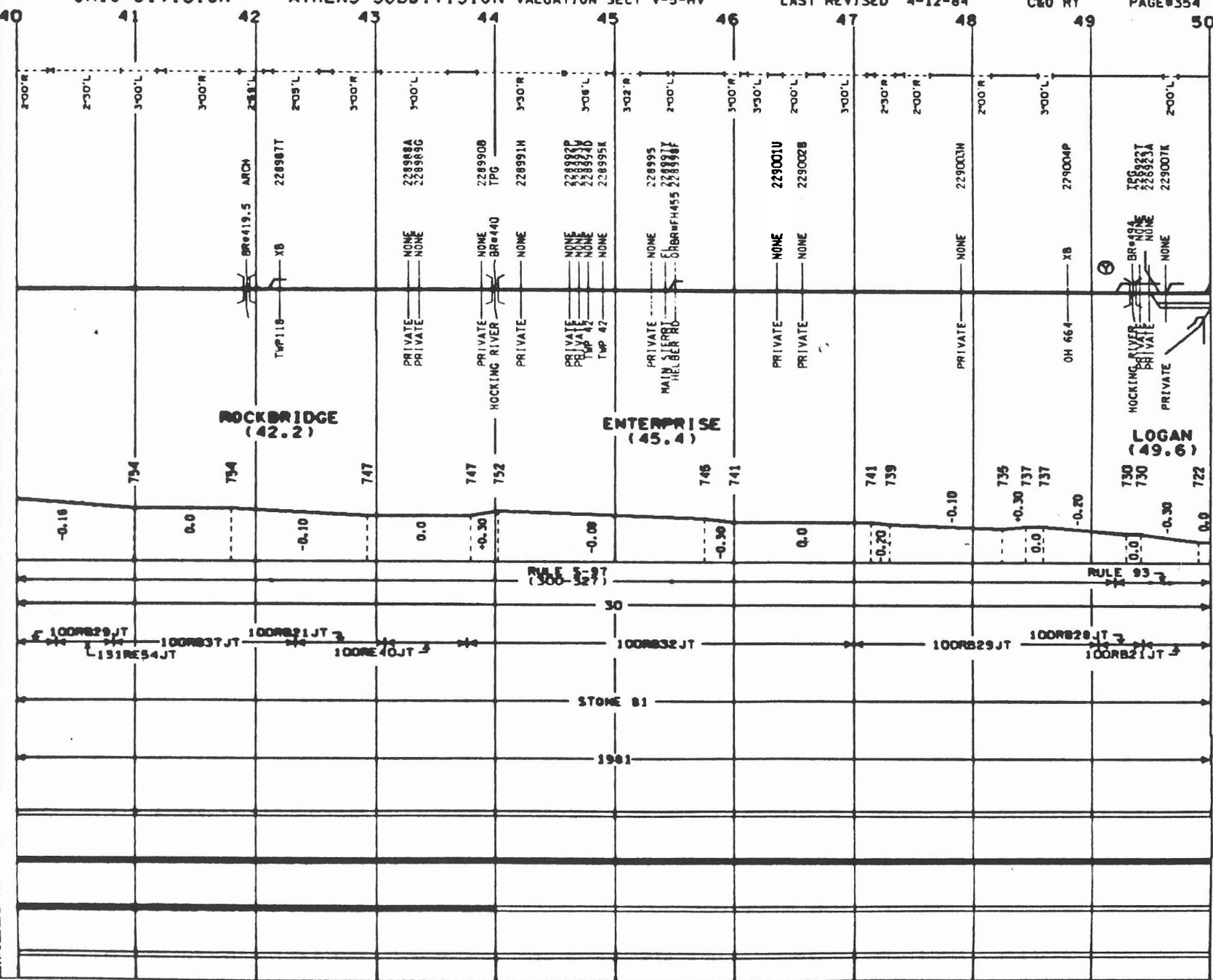
TIES

PROGRAM-EIS #857 RAIL

SURFACING

TIES

OTHER



MILE POST



OHIO DIVISION

ATHENS SUBDIVISION VALUATION SECT V-5-HV

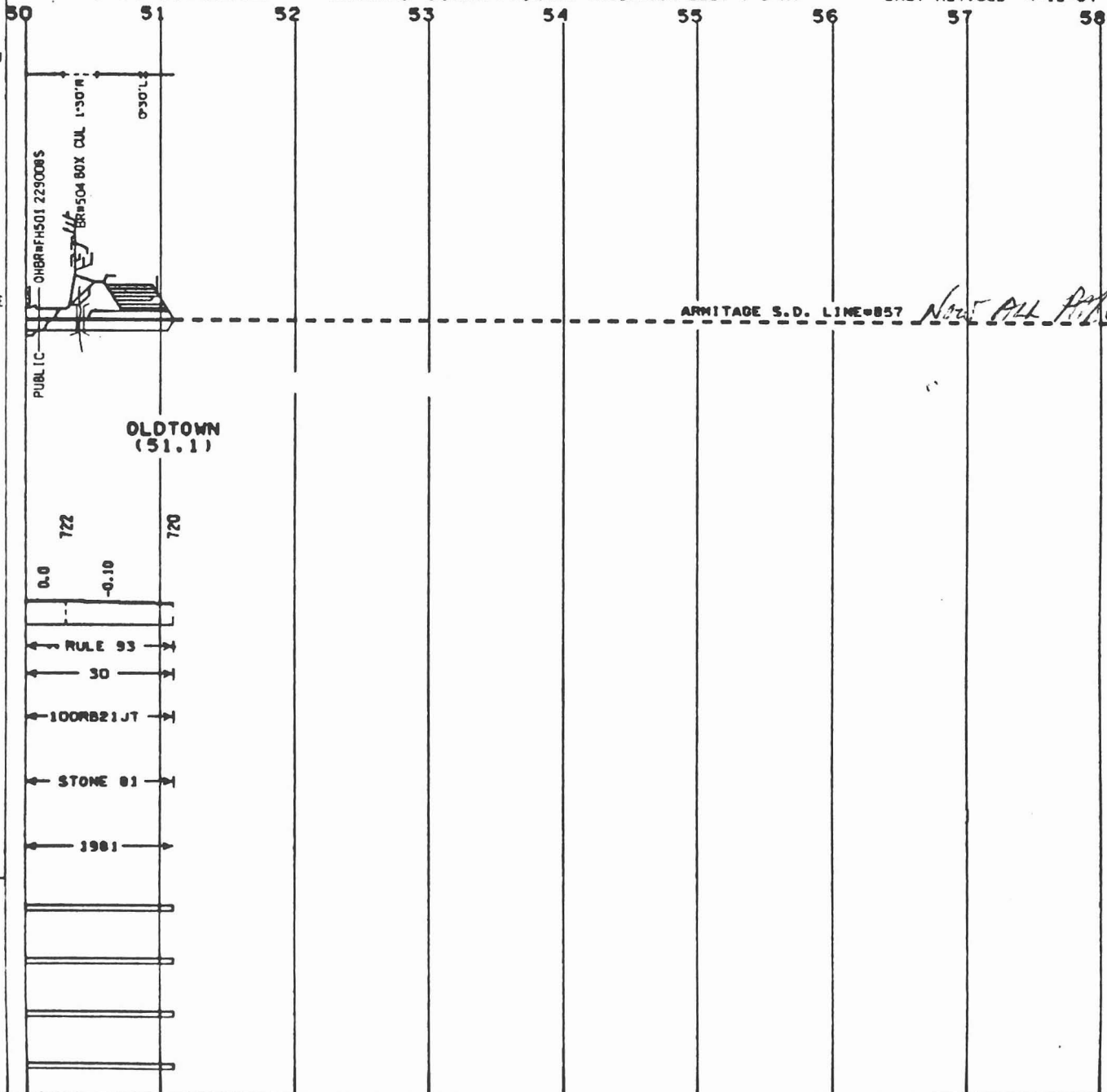
LAST REVISED 4-12-84

C&O RY

PAGE#355

ALIGNMENT-PLAN

- SUPERELEVATION
- DEG OF CURVE
- DOT CROSSING NUMBER
- CROSSING TCD/BRIDGE NO
- FL=FLASHING LIGHTS
- GATES-GATES XB=CROSS BUCK
- B=BELLS FM=FLAG MAN
- BRIDGE TYPES
- TRE=TIMBER TRESTLE
- PG=PLATE GIRDER BR=BEAM
- MOVE=MOVABLE RC=CONCRETE
- CULV=CULVERT TRUS=TRUSS
- DEFECTIVE EQUIP DET
- MOT BOX DET
- YARD LIMIT
- SIGNALS
- BRIDGE GR MAST
- CANTILEVER BR
- SEMAPHORE DWARF



PROFILE--PERCENT OF GRADE

ELEVATION

- INTERLOCKING
- HAND SP = .
- POWER SW = . PS
- ELECT LOCK = . EL LOCAL=L:
- SPRING SW = . SS
- REMOTE=R:
- AUTO =A:

OPERATING RULES

MAX AUTH SPEED

RAIL

SURFACING

TIES

PROGRAM-EIS #857

RAIL

SURFACING

TIES

OTHER

OHIO DIVISION ^{Arden's} ~~ARMITAGE~~ SUBDIVISION VALUATION SECT V-5-HV

LAST REVISED 4-11-84

C&O RY

PAGE#357

WILE POST



ALIGNMENT-
PLAN

- BR = CROSSING NUMBER
- CROSSING TO BRIDGE NO
- FL-FLASHING LIGHTS
- GATES-GATES XB-CROSS BUCK
- B-BELLS FM-FLAG MAN
- ○ → BR-XING OR OVER RR
- ○ → BR-FOR BR OVER XING
- BRIDGE TYPES
- TIES-TIMBER TRESTLE
- PG-PLATE GIRDER BR-BEAM
- NONE-MOVABLE RC-CONCRETE
- COL-V-CULVERT TRUS-TRUSS
- DEFECTIVE EQUIP DET - (D)
- NOI BR DET - (N)
- YARD LIMIT - (Y)
- SIGNALS
- BRIDGE } OR MAST T
- CANTILEVER BR }
- SEMAPHORE ○ DWARF T

PROFILE-PERCENT OF GRADE

ELEVATION

INTERLOCKING

- MANO SP = ○ REMOTE=R:
- POWER SW = ○ PS AUTO =A:
- ELECT LOCK = ○ EL LOCAL=L:
- SPRING SW = ○ SS

OPERATING RULES

MAX AUTH SPEED

RAIL

SURFACING

TIES

PROGRAM-EIS #857

RAIL

SURFACING

TIES

OTHER

