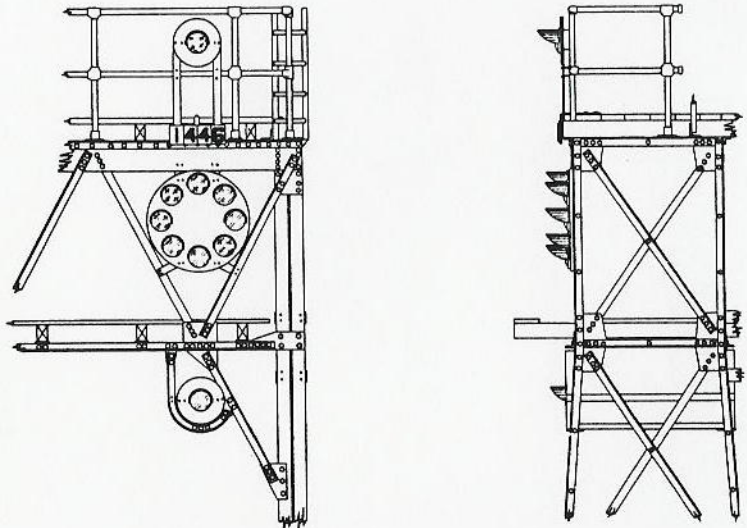


**NOTES:**

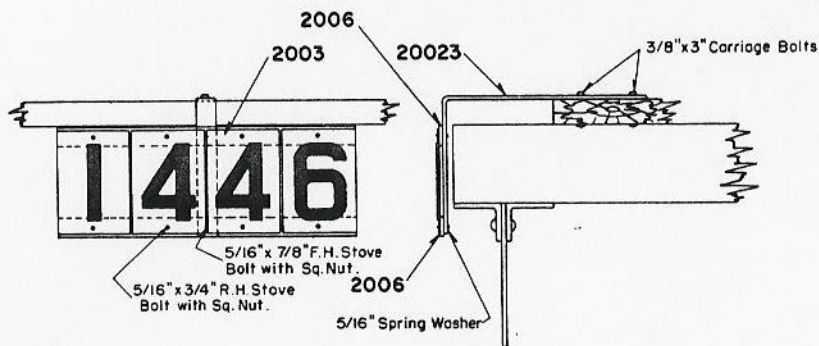
- Where top stagger marker is used shift one support as necessary and drill holes for connections in field. Shift railing post as necessary.
- Painting shall be in accordance with Instructions for Painting Signal & Interlocking Apparatus I-134.
- Bridge construction shall be in accordance with Office of Engineer of Bridges Drawing No. 23258.
- See standard plan S-185 for signal assemblies required.

Approved:   
Chief Eng. Comm. & Sigs.

BALTIMORE & OHIO RAILROAD  
**COLOR POSITION LIGHT SIGNALS  
 FOR SIGNAL BRIDGES**  
 Office of Chief Engineer Comm. & Signals  
 Baltimore, Md.  
 Jan. 4, 1950



TYPICAL NUMBER BOARD ASSEMBLY FOR SIGNAL BRIDGES



ENLARGED VIEW SHOWING APPLICATION TO SIGNAL BRIDGE (NO. 20019 SHOWN)

PIECE NUMBER	NUMBER BOARD ASSEMBLIES														
	FOR C.P.L. SIGNALS			FOR SEMAPHORE SIGNALS						FOR SIGNAL BRIDGE BRACKET POST CANTILEVER SIGNALS			FOR BRACKET POST CANTILEVER SIGNAL		
	No. 2008 2 Numbers	No. 2009 3 Numbers	No. 20010 4 Numbers	FOR 5" I.D. MAST			FOR 6" I.D. MAST			No. 20017 2 Numbers	No. 20018 3 Numbers	No. 20019 4 Numbers	Where Permissive Marker is used.		
				No. 20011 2 Numbers	No. 20012 3 Numbers	No. 20013 4 Numbers	No. 20014 2 Numbers	No. 20015 3 Numbers	No. 20016 4 Numbers				No. 20020 2 Numbers	No. 20021 3 Numbers	No. 20022 4 Numbers
2003	2	3	4	2	3	4	2	3	4	2	3	4	2	3	4
2004	2			2			2			2			2		
2005		2			2			2			2			2	
2006			2			2			2			2			2
2007	1	1	1	1	1	1	1	1	1	1	1	1	1	1	1
1958				1	1	1									
1959							1	1	1						
20023										1	1	1			
20024													1	1	1
5/16" x 3/4" R.H. Stove Bolt with Sq. Nut.	4	4	8	4	4	6	4	4	8	4	4	8	4	4	8
5/16" x 1" R.H. Stove Bolt with Sq. Nut.		2			2			2			2			2	
5/16" x 7/8" F.H. Stove Bolt with Sq. Nut.	2		2	2		2	2		2	2		2	2		2
5/16" Spring Washer	2	2	2	2	2	2	2	2	2	2	2	2	2	2	2
3/8" x 3" * Carriage Bolt										2	2	2	2	2	2


\*-Omit for Bracket Post use 3/8" x 1-1/4" Sq. Hd. Machine Bolt with Hex. Nut and 2 Cut Washers.

Typical ordering reference:

" \_\_\_\_\_ No. 2009 signal number board assembly complete having number "324", Dwg. S-200."

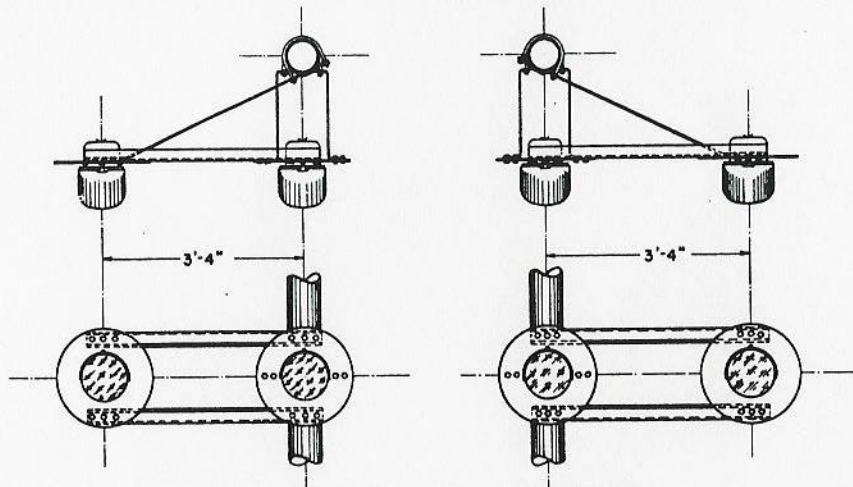
NOTES:

- Bolts, Nuts, and washers shall be cadmium plated.
- Number boards shall be manufactured and assembled in Zanesville Signal Shop.

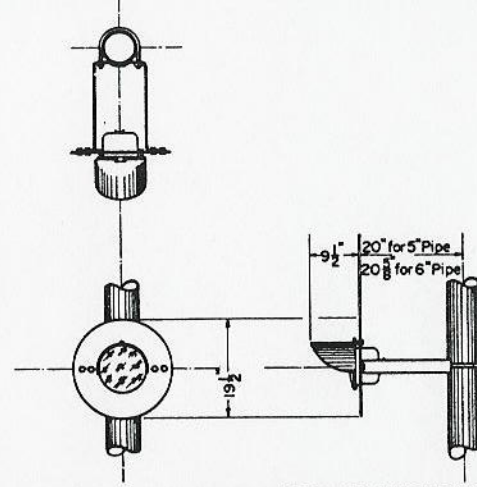
Approved:   
Chief Engr. Comm. & Sigs.

BALTIMORE & OHIO RAILROAD  
SIGNAL NUMBER BOARDS  
Office of Chief Engineer Comm. & Signals  
Baltimore, Md.  
March 1, 1951.

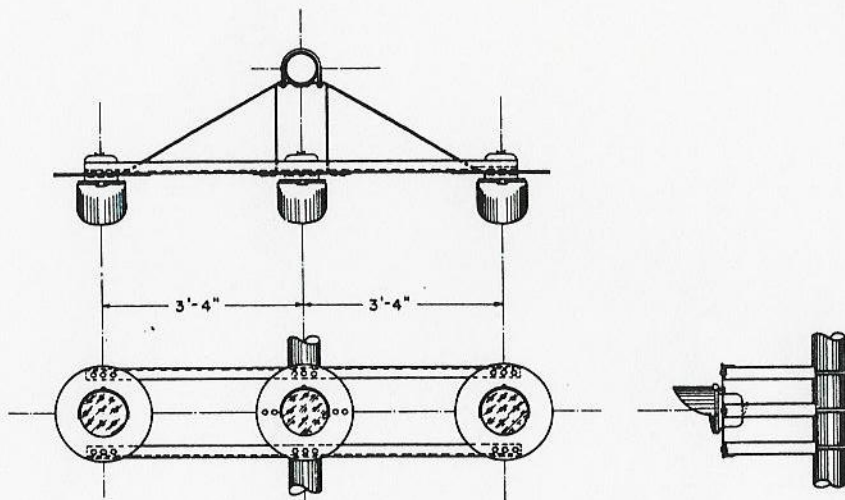




SKETCH SHOWING APPLICATION OF TWO MARKERS  
(Top or Bottom)



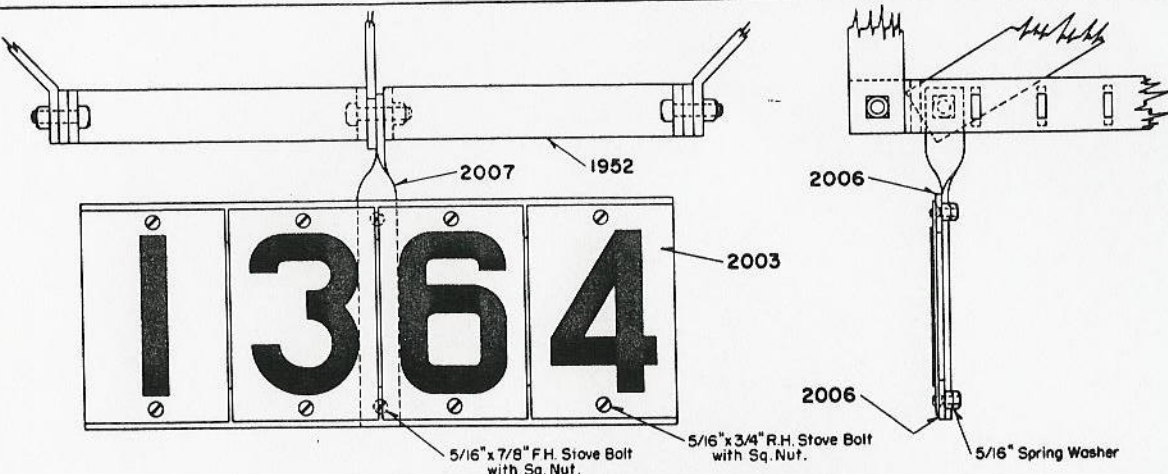
SKETCH SHOWING APPLICATION OF SINGLE MARKER  
(Top or Bottom)



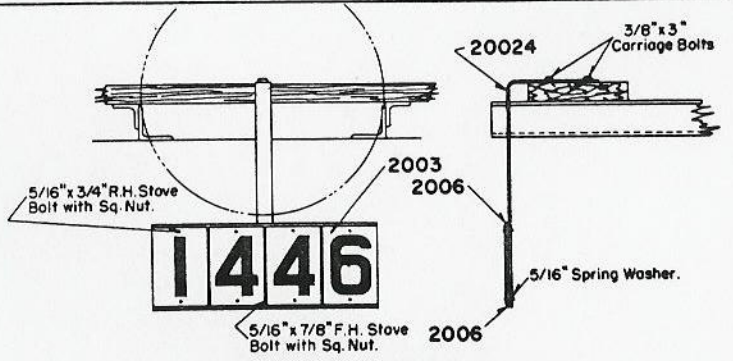
SKETCH SHOWING APPLICATION OF THREE MARKERS  
(Top or Bottom)

Approved: *Althaus*  
Chief Engr. Comm. & Sigs.

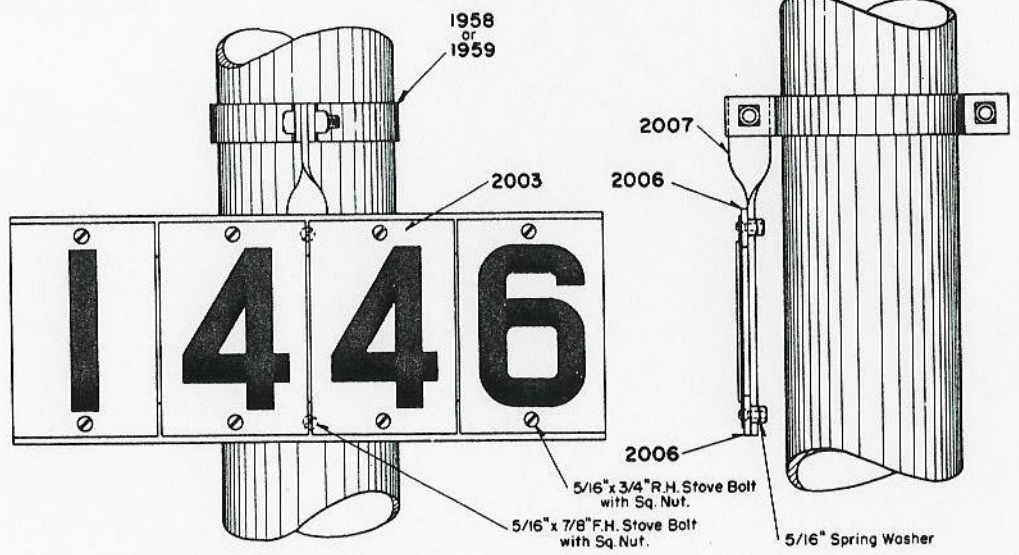
BALTIMORE & OHIO RAILROAD  
**MARKER LIGHTS FOR  
COLOR POSITION LIGHT SIGNALS**  
Office of Chief Engineer Comm. & Signals  
Baltimore, Md.  
Nov. 30, 1949



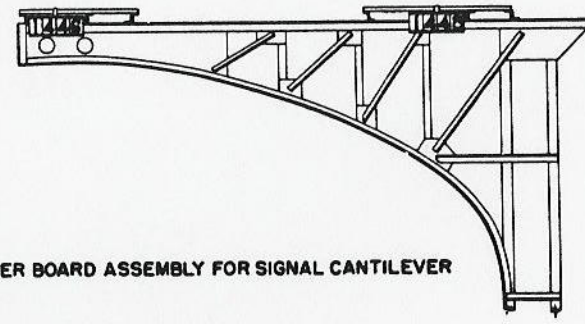
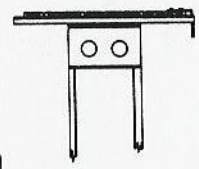
TYPICAL NUMBER BOARD ASSEMBLY FOR C.P.L. SIGNAL  
(NO. 20010 SHOWN)



ENLARGED VIEW SHOWING  
APPLICATION WHEN PERMISSIVE MARKER IS USED  
(NO. 20022 SHOWN)



TYPICAL NUMBER BOARD ASSEMBLY FOR SEMAPHORE SIGNALS

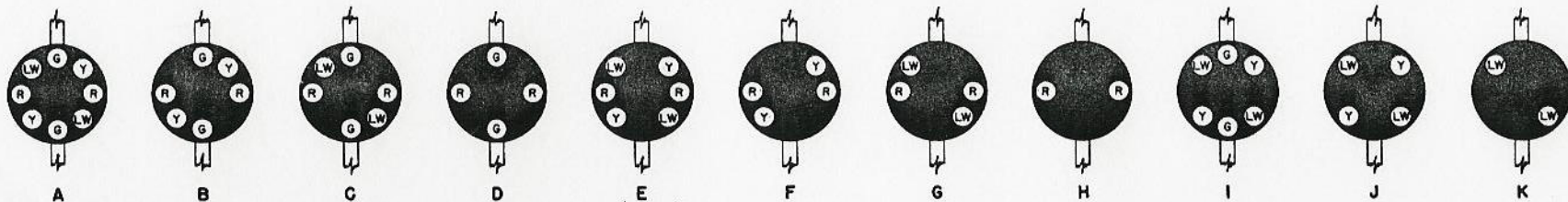


TYPICAL NUMBER BOARD ASSEMBLY FOR SIGNAL CANTILEVER

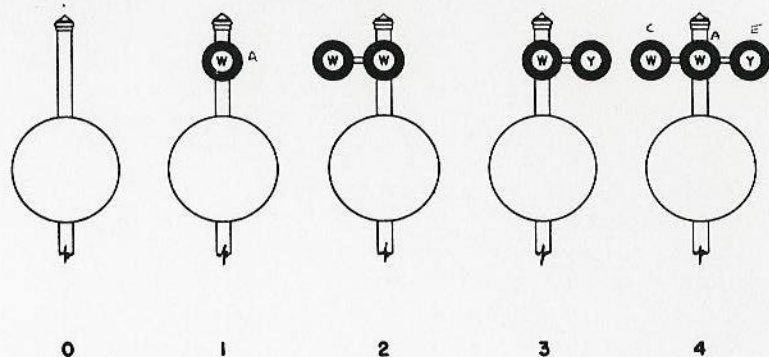
Approved: *A. S. Henry*  
Chief Engr. Comm. & Sigs.

BALTIMORE & OHIO RAILROAD  
**SIGNAL NUMBER BOARDS**  
Office of Chief Engineer, Comm. & Signals  
Baltimore, Md.  
March 1, 1951.

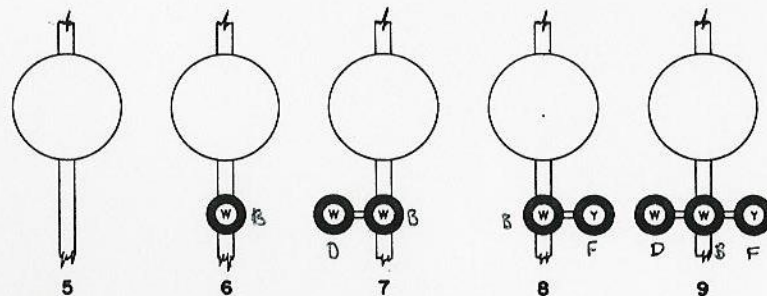
## MAIN GROUP



## TOP MARKER GROUP



## BOTTOM MARKER GROUP



### NOTES:

Signals shall conform to A.A.R. Signal Section Specification 162.  
Lamp units for high signals installed on tangent track shall have clear outer doublet lens with 40 degree deflecting bullseye.

Lamp units for high signals installed on curved track shall have clear 30 degree outer doublet spreadlite lens with 40 degree flat deflecting roundel.

Marker lamp unit with clear inner doublet lens shall be provided with copper wire screen. See Dwg. S-193-D, sh.1.

Ordering reference for complete signal shall consist of three characters as follows:

FIRST - Letter designating main group.

SECOND - Figure designating top marker group.

THIRD - Figure designating bottom marker group.

### TYPICAL ORDERING REFERENCE

Dwarf signal:  
" — Dwarf Color Position Light Signal assembly  
Fig. B-1-5", Dwg. S-185-B.

High signal for tangent track:  
" — High Color Position Light Signal assembly  
Fig. B-1-5", Dwg. S-185-B.

High signal for curved track:  
" — High Color Position Light Signal assembly  
with 30 degree spreadlite lens, Fig. B-1-5,  
Dwg. S-185-B.

Approved: A. L. Jordan  
Signal Engineer

BALTIMORE & OHIO RAILROAD  
**ASSEMBLIES OF  
COLOR POSITION LIGHT SIGNALS**

Office of Signal Engineer  
Baltimore, Md.  
Sept. 11, 1956.