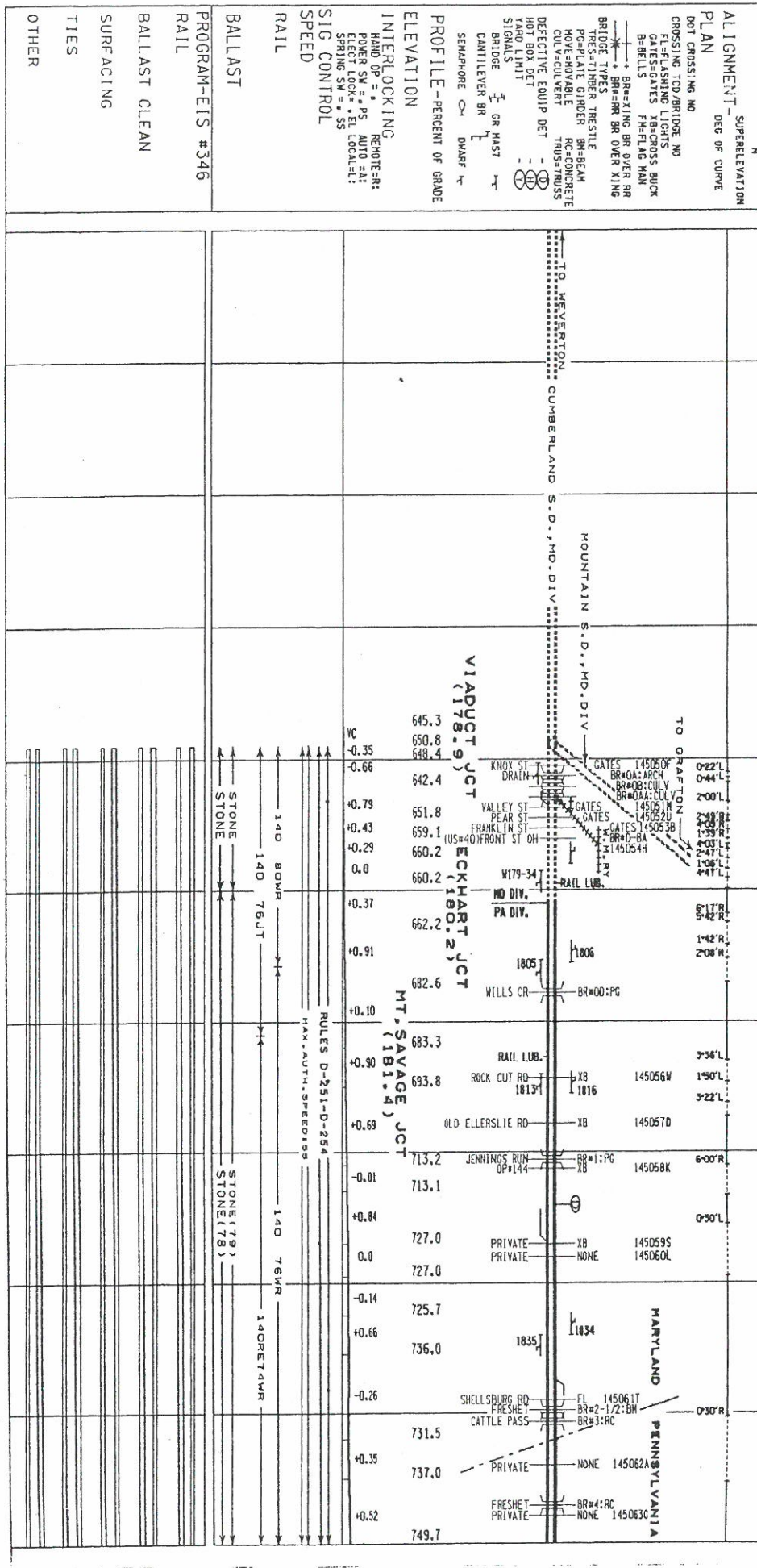
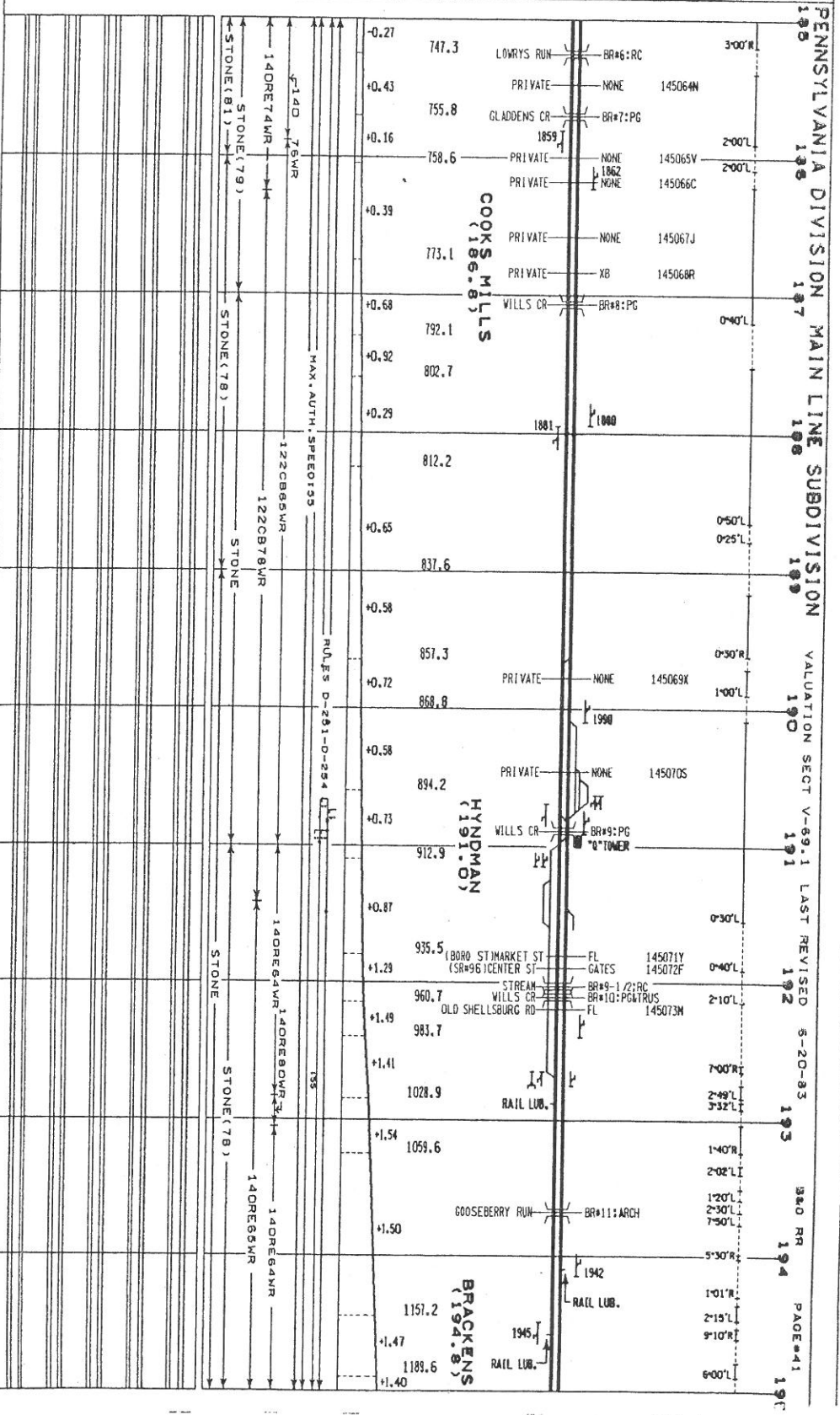


MILE POST E N W
 SUPERELEVATION
 ALIGNMENT - DEG OF CURVE
 PLAN
 DOT CROSSING NO
 CROSSING TOC/BRIDGE NO
 FL-FLASHING LIGHTS
 GATES=GATES XB=CROSS BUCK
 B-BELLS F=FLAG HAN
 BR=BR BR OVER RR
 BR=BR BR OVER XING
 BRIDGE TYPES
 PRES-TYPE ARCH-BEAM
 MOVE-MOVABLE RC-CONCRETE
 CULV-CULVERT TRUSS-TRUSS
 DEFECTIVE EQUIP DET
 HOT BOX DET
 YARD LIMIT
 SIGNALS
 BRIDGE OR HAST
 CANTILEVER BR
 SEMAPHORE OR DWARF
 PROFILE - PERCENT OF GRADE
 ELEVATION
 INTERLOCKING
 HAND OP = REHOTE-R:
 POWER SW = PS AUTO EAL:
 ELECT LOCK = EL LOCAL-LL:
 SPRING SW = SS
 SIG CONTROL
 SPEED
 RAIL
 BALLAST
 PROGRAM-EIS #346
 RAIL
 BALLAST CLEAN
 SURFACING
 TIES
 OTHER

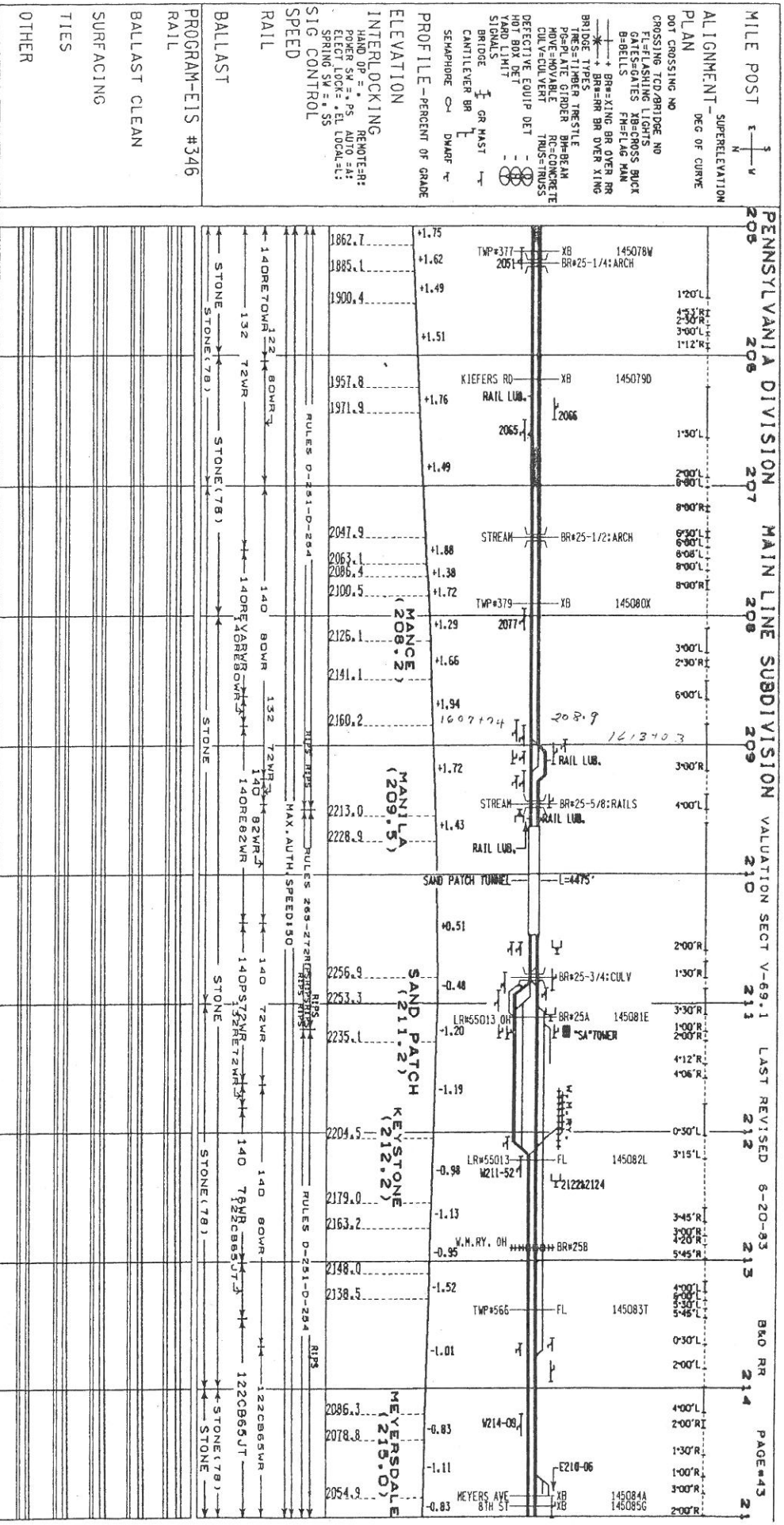


43

MILE POST E N W
 ALIGNMENT - SUPERELEVATION
 PLAN DEG OF CURVE
 DOT CROSSING NO
 CROSSING TO D/BRIDGE NO
 FL=FLASHING LIGHTS
 GATE=GATES XB=CROSS BUICK
 BEBELLS FM=FLAG MAN
 BRIDGE TYPES
 * + BR=BR BR OVER XING
 BRIDGE TYPES
 TRUSSES
 RC=CONCRETE
 TRUS=TRUSS
 HOV=HOV
 CUL=CULVERT
 DEFECTIVE EQUIP DET
 HOT BOX DET
 YARD LIMIT
 SIGNALS
 BRIDGE I GR HAST
 CANTILEVER BR
 SEMAPHORE OR DWARF
 PROFILE - PERCENT OF GRADE
 ELEVATION
 INTERLOCKING
 HAND OF TRAFFIC
 REMOTE: POWER SW = PS AUTO M
 ELECT LOCK = EL LOCAL = L
 SPRING SW = S S
 SIG CONTROL
 SPEED
 RAIL
 BALLAST
 PROGRAM EIS #346
 RAIL
 BALLAST CLEAN
 SURFACING
 TIES
 OTHER

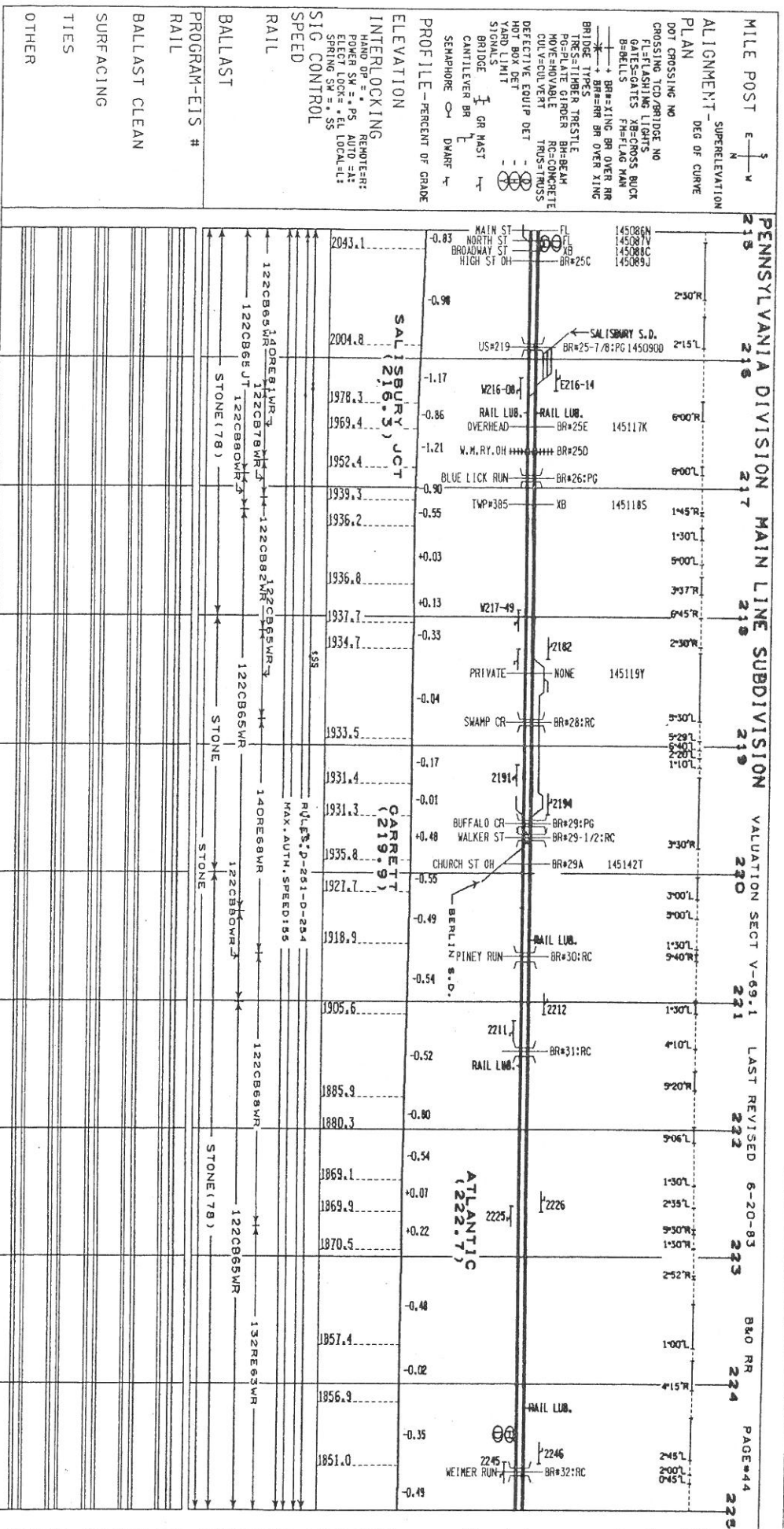


414



BRIDGE TYPES: + BR-XING BR OVER XING
 TIES-TIMBER TRESTLE
 PG=PLATE GIRDER BH-BEHAM
 HOVE=MOVABLE RC=CONCRETE
 CUL=CULVERT TRUS=TRUSS
 DEFECTIVE EQUIP DET
 HOT BOX DET
 YARD LIMIT
 SIGNALS
 BRIDGE I OR MAST
 CANTILEVER BR
 SEMAPHORE OR DMARF T
 PROFILE - PERCENT OF GRADE
 ELEVATION
 INTERLOCKING REMOTE: RR
 HAND OP = *
 POWER SW = PS
 AUTO = A
 ELECT LOCK = EL LOCAL = L
 SPRING SW = S S
 SIG CONTROL
 SPEED
 RAIL
 BALLAST
 PROGRAM-EIS #346
 RAIL
 BALLAST CLEAN
 SURFACING
 TIES
 OTHER

STONE (78)
 STONE (78)
 STONE (78)
 STONE (78)
 STONE (78)
 STONE (78)



MILE POST $\frac{E}{N} \frac{S}{W}$

ALIGNMENT - SUPERELEVATION

PLAN DEG OF CURVE

DOT CROSSING NO

CROSSING TCD/BRIDGE NO

FL=FLASHING LIGHTS

GATE=GATES XB=CROSS BUCK

B=BELLS FH=FLAG MAN

BR=BRIDGE BR OVER RR

BR=BRIDGE BR OVER XING

BRIDGE TYPES

TRES-TIMBER PRESSTILE

POSTALTE GIRDER BR=BEAM

HOVESHOWABLE TRUSS=TRUSS

CONCRETE

DEFECTIVE EQUIP DET

YARD BRIDGE

YARD BRIDGE

BRIDGE

CANTILEVER BR

GR MAST

SEMAPHORE DWARF

PROFILE - PERCENT OF GRADE

ELEVATION

INTERLOCKING

HAND OPERATED REMOTE

PLATE OPERATED AUTO

ELECTRIFIED LOCAL

SPRING SM = S

SIG CONTROL

SPEED

RAIL

BALLAST

PROGRAM-EIS #

RAIL

BALLAST CLEAN

SURFACING

TIES

OTHER

PENNSYLVANIA DIVISION MAIN LINE SUBDIVISION VALUATION SECT V-69.1 LAST REVISED 6-20-83 B&O RR PAGE #44

215 216 217 218 219 220 221 222 223 224 225

PENNSYLVANIA DIVISION MAIN LINE SUBDIVISION VALUATION SECT V-69.1 LAST REVISED 6-21-03

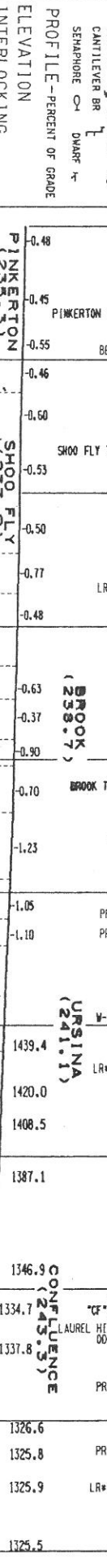
MILE POST 235 236 237 238 239 240 241 242 243 244 245

ALIGNMENT - SUPERELEVATION
 PLAN DEO OF CURVE

CROSSING TCD/BRIDGE NO
 FL=FLASHING LIGHTS
 GATES=GATES XB=CROSS BUCK
 B=BELLS F=FLAG MAN
 + BR=BRIDGE BR OVER RR
 BRIDGE TIES
 PRE-CAST CONCRETE
 MOVE=MOVABLE
 CULV=CULVERT TRUSS=TRUSS
 DEFECTIVE EQUIP DET
 HOT BOX DET
 YARD LIMIT
 SIGNALS
 BRIDGE I OR MAST
 CANTILEVER BR L
 SEMAPHORE C DWARF H

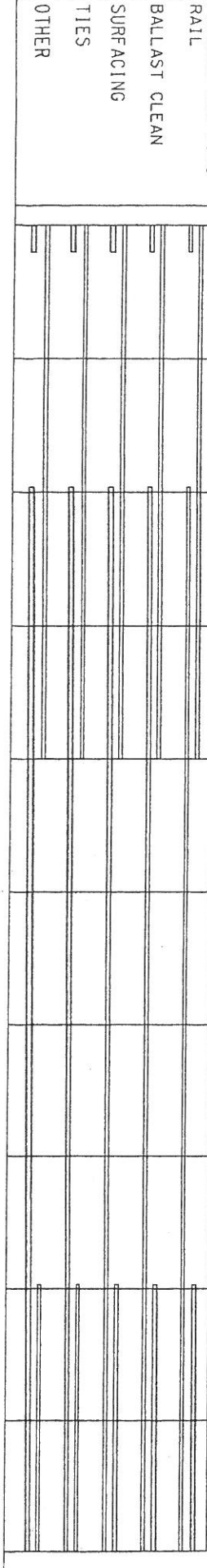
ELEVATION
 INTERLOCKING REMOTE RR:
 HAND OP =
 POWER SW = PS AUTO EN:
 ELECT LOCK = EL LOCAL AL:
 SPRING SW = S S

SIG CONTROL
 RAIL
 BALLAST
 PROGRAM-EIS #346
 RAIL
 BALLAST CLEAN
 SURFACING
 TIES
 OTHER

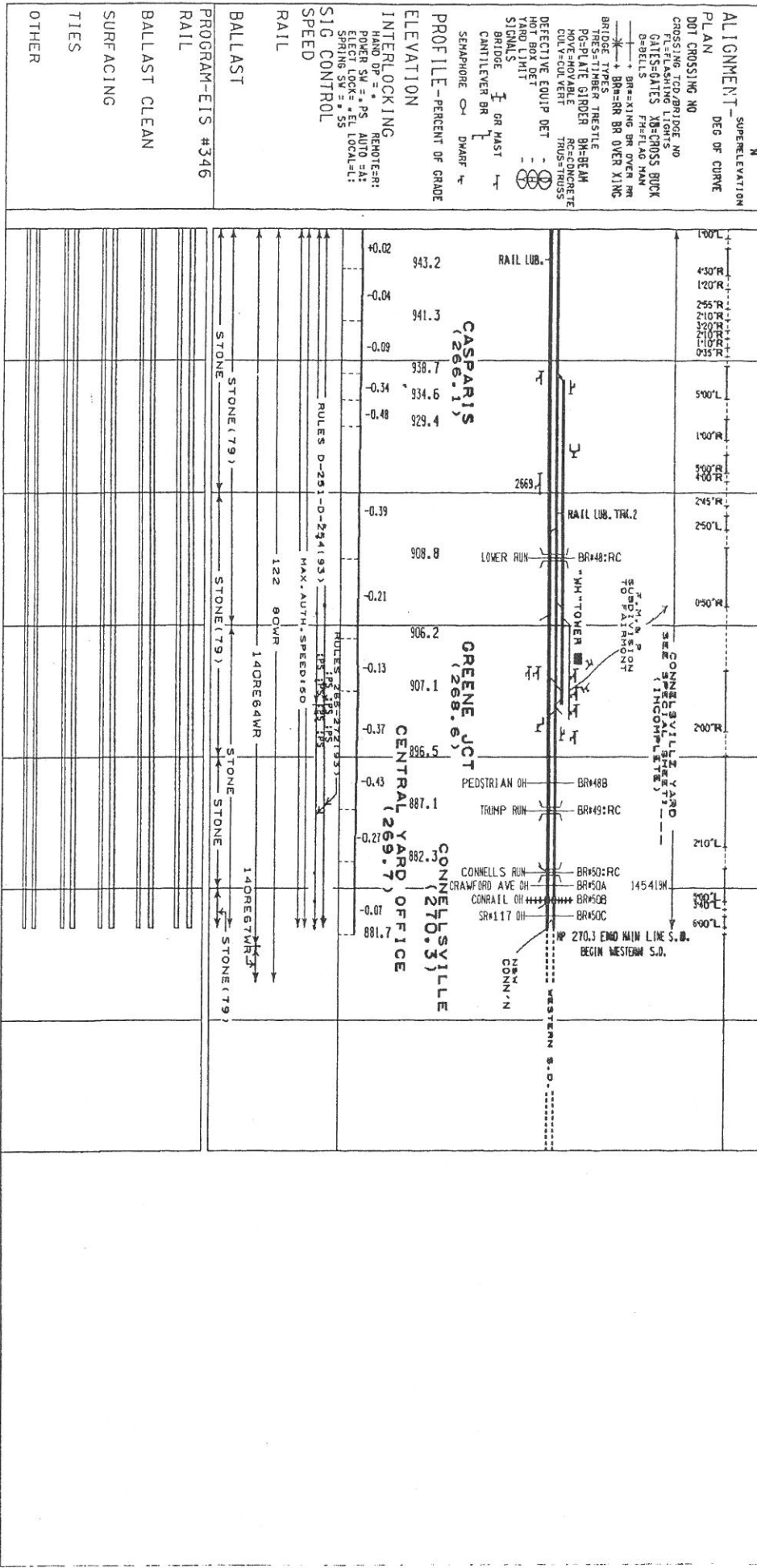


Station	Elevation	Notes
1637.9	-0.48	PINKERTON (235.5)
1630.3	-0.55	PINKERTON TUNNEL L=1081'
1624.7	-0.46	BEAR RUN BR#398: ARCH
1620.7	-0.60	SHOO FLY TUNNEL L=307'
1609.4	-0.53	SHOO FLY (237.0)
1603.2	-0.50	RAIL LUB.
1595.0	-0.77	LR#55016 BR#40: ARCH 145273W
1585.6	-0.48	RAIL LUB.
1572.1	-0.63	BROOK (238.7)
1563.9	-0.37	RAIL LUB.
1556.0	-0.90	BROOK TUNNEL L=1856'
1548.9	-0.70	RAIL LUB.
1536.6	-1.23	RAIL LUB.
1510.1	-1.05	PRIVATE NONE 145274D
1493.6	-1.10	PRIVATE NONE 145275K
1482.6	-1.01	NO. 2 TRACK (LOW GRADE) SEE PAGE 46A
1439.4	-1.17	URSINA (241.1)
1420.0	-0.92	LR#55115 FL 145276S
1408.5	-1.12	LAUREL HELL CR ODEEN ST
1387.1	-1.20	CONFLUENCE (245.5)
1346.9	-0.74	LR#50 CF TOWER
1334.7	-0.60	BR#41: RC 145277Y
1337.8	-0.99	BR#42: PG 145290M
1326.6	-0.09	PRIVATE NONE 145291U
1325.8	+0.13	PRIVATE NONE 145292B
1325.9	-0.02	LR#55018 GATES 145293H
1325.5		BR#43: ARCH

RULES 268-272
 MAX. AUTH. SPEED 155
 TRACK NO. 2 - SEE PAGE #46A
 RULES 268-272
 MAX. AUTH. SPEED 155
 RULES 0-251-D-254
 MAX. AUTH. SPEED 155



MILE POST	ELEVATION	ALIGNMENT	SUPERELEVATION	DEG OF CURVE	PENNSYLVANIA DIVISION		VALUATION	SECT	V-69.1	LAST REVISED	6-21-83	253	980 RR	254	PAGE 48	255
					MAIN LINE	SUBDIVISION										
255	1062.1															
256	1000.2															
257	1025.7															
258	1016.8															
259	1008.9															
260	1023.5															
261	1018.6															
262	1022.2															
263	1018.8															
264	1012.2															
265	1006.1															
266	1007.7															
267	1052.3															
268	1041.5															
269	1006.6															
270	973.7															
271	970.4															
272	967.6															
273	953.2															
274	949.5															
275	948.3															
276	941.8															



MILE POST
 ALIGNMENT - SUPERELEVATION
 PLAN DEC OF CURVE

DOT CROSSING NO
 CROSSING TGD/BRIDGE NO
 FLASHING LIGHTS
 GATES-GATES XB-CROSS BUCK
 B-BELLS FM-FLAG MAN

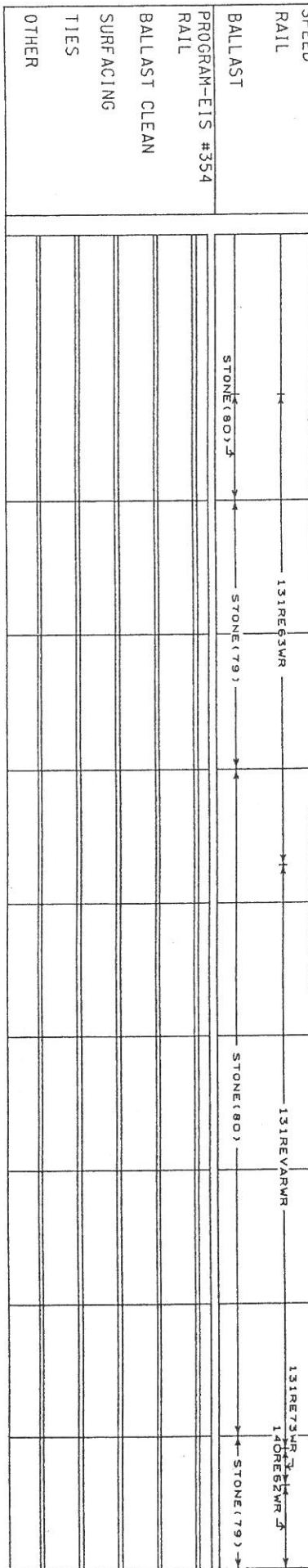
BRIDGE TYPES
 PRES-TIMBER TRUSS
 POST-TENSIONED CONCRETE
 COL-VEHIC TRUSS
 DETECTIVE EQUIP DET

YARD LIGHT
 SIGNALS
 BRIDGE
 CANTILEVER BR
 SEMAPHORE OR DWARF

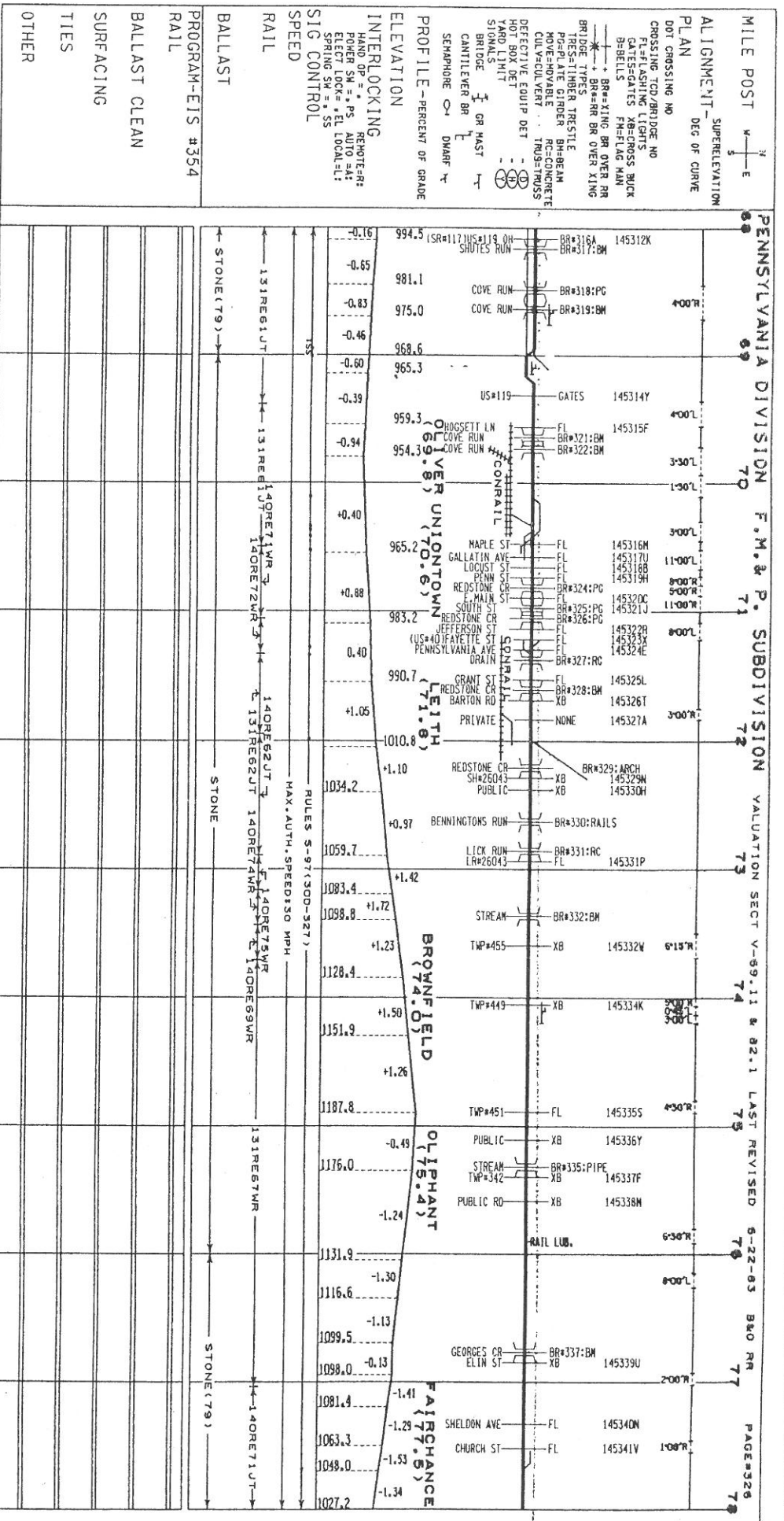
PROFILE - PERCENT OF GRADE
 ELEVATION
 INTERLOCKING

SIG CONTROL
 SPEED
 RAIL
 BALLAST

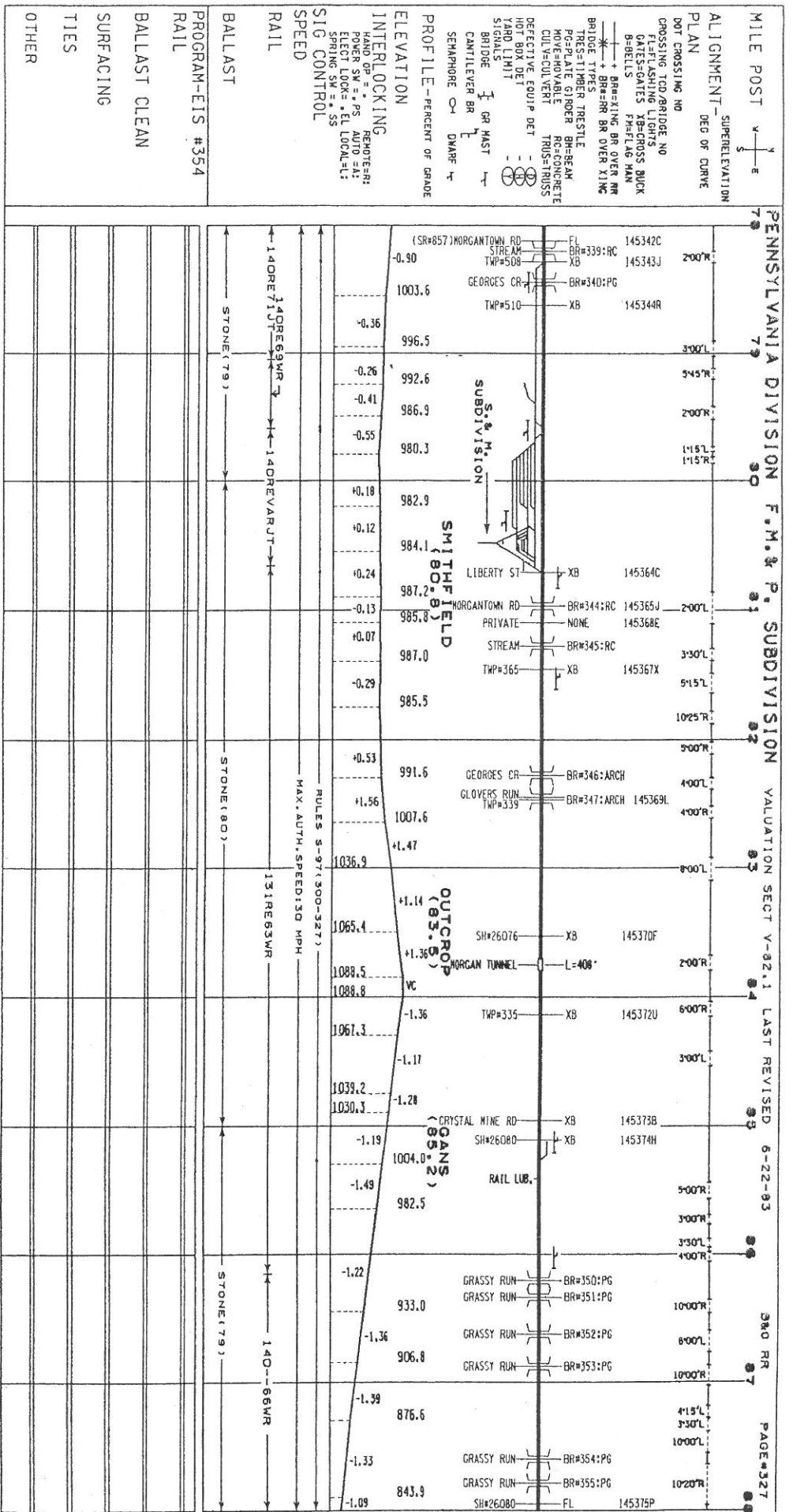
PROGRAM-EIS #354
 RAIL
 BALLAST CLEAN
 SURFACING
 TIES
 OTHER



26!

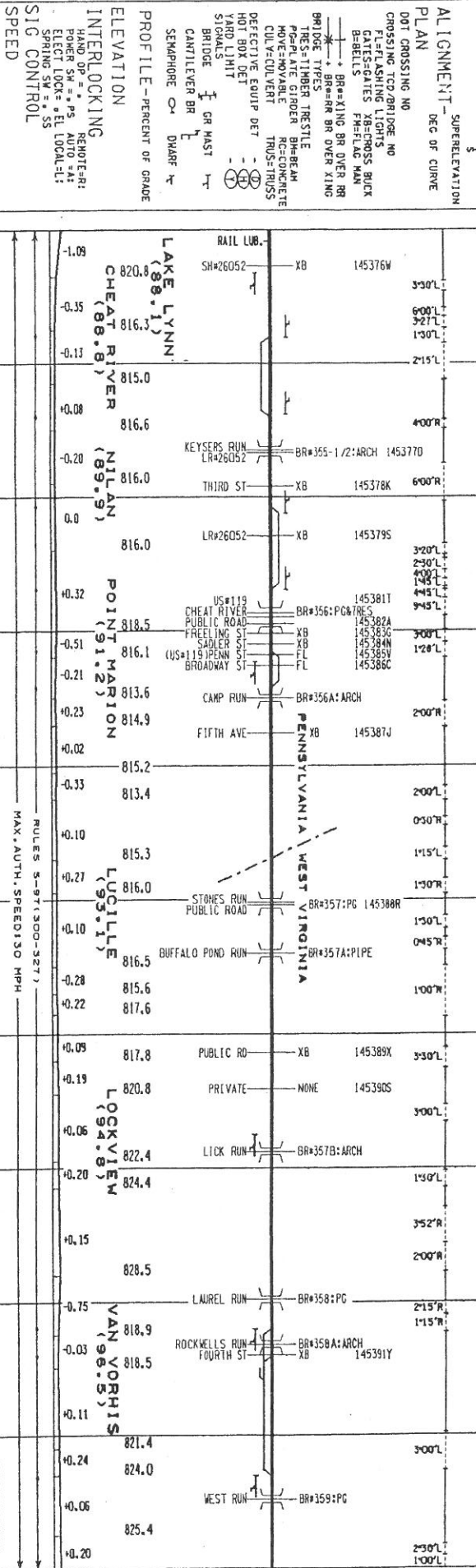


262



263

MILE POST N
E
ALIGNMENT - SUPERELEVATION
PLAN DEG OF CURVE
DOT CROSSING NO
CROSSING TOP BRIDGE NO
FLASHING LIGHTS
GATES/GATES BACK
BELLS
BR=BRING BR OVER RR
BRIDGE TYPES
TRES-TIMBER TRESTLE
POSTALTE GIRDER RC=CONCRETE
HOVE=MOVABLE BH=BEAM
CULV=CULVERT TRUS=TRUSS
DEFECTIVE EQUIP DET
HOT BOX DET
YARD LIMIT
SIGNALS
BRIDGE
CANTILEVER BR
SEMAPHORE
DWARF



VALUATION SECT V-82.1 & 85.1 LAST REVISED 6-22-83

B&O RR PAGE#328

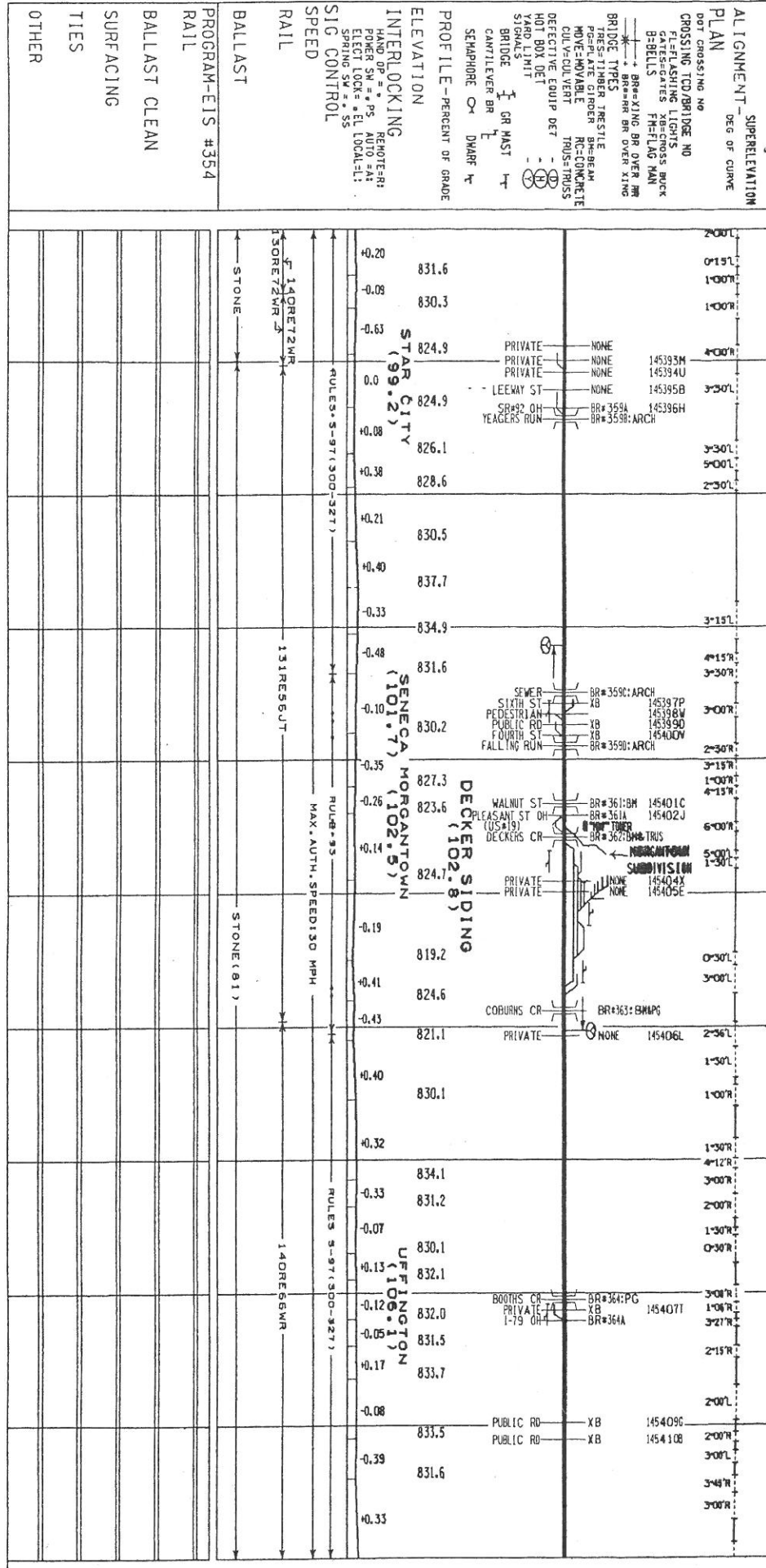
330'L	327'L	320'L	230'L	400'L	450'L	300'L	120'L	200'R	200'L	050'R	150'R	150'L	045'R	100'W	330'L	300'L	150'L	352'R	200'R	215'R	115'W	300'L	150'L	250'L	100'L
-------	-------	-------	-------	-------	-------	-------	-------	-------	-------	-------	-------	-------	-------	-------	-------	-------	-------	-------	-------	-------	-------	-------	-------	-------	-------

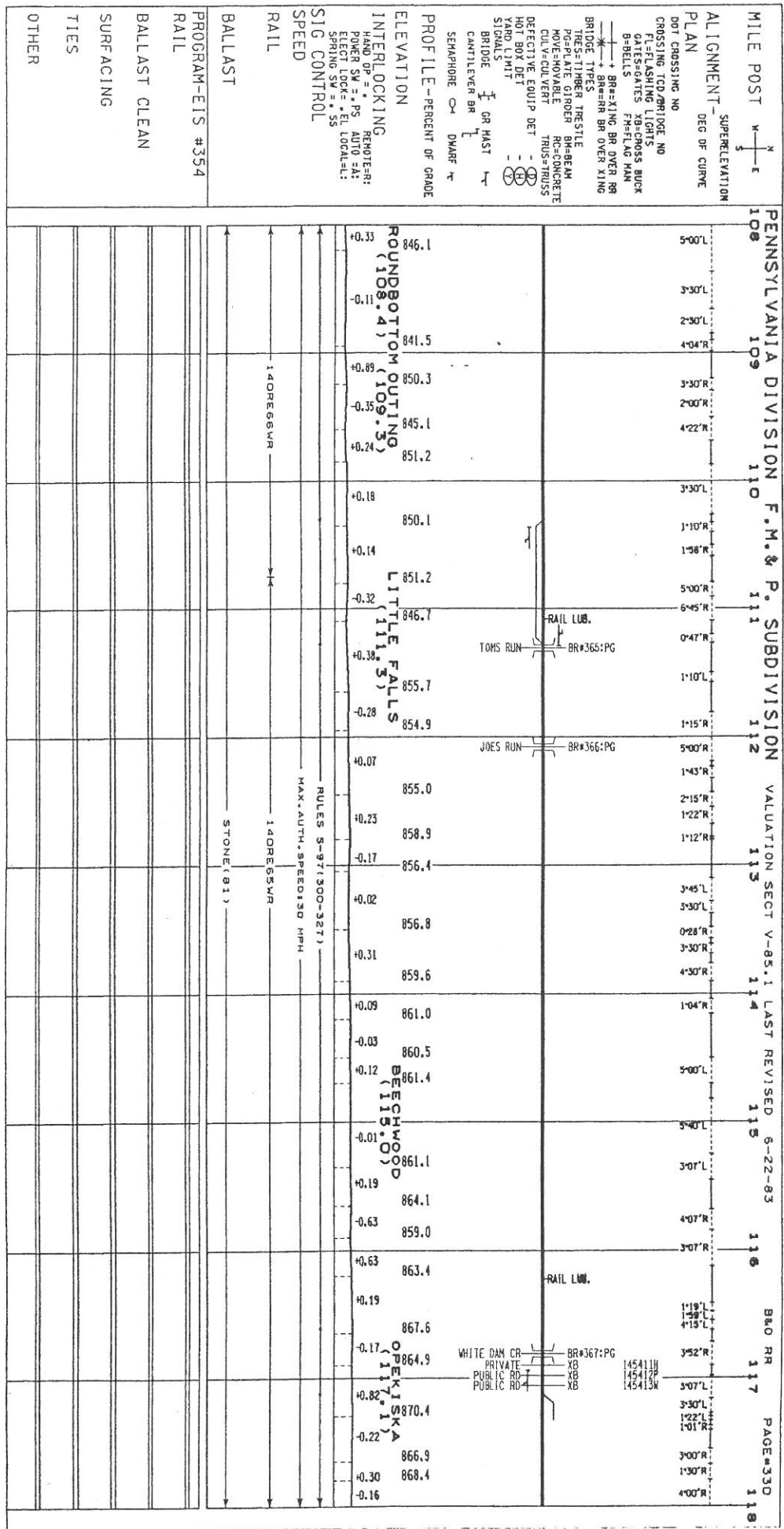
LAKE LYNN (88.1)
CHEAT RIVER (88.8)
NILAN (89.9)
POINT MARION (91.2)
LUCILLE (95.1)
LOCKVIEW (94.8)
VAN YORHIS (96.5)

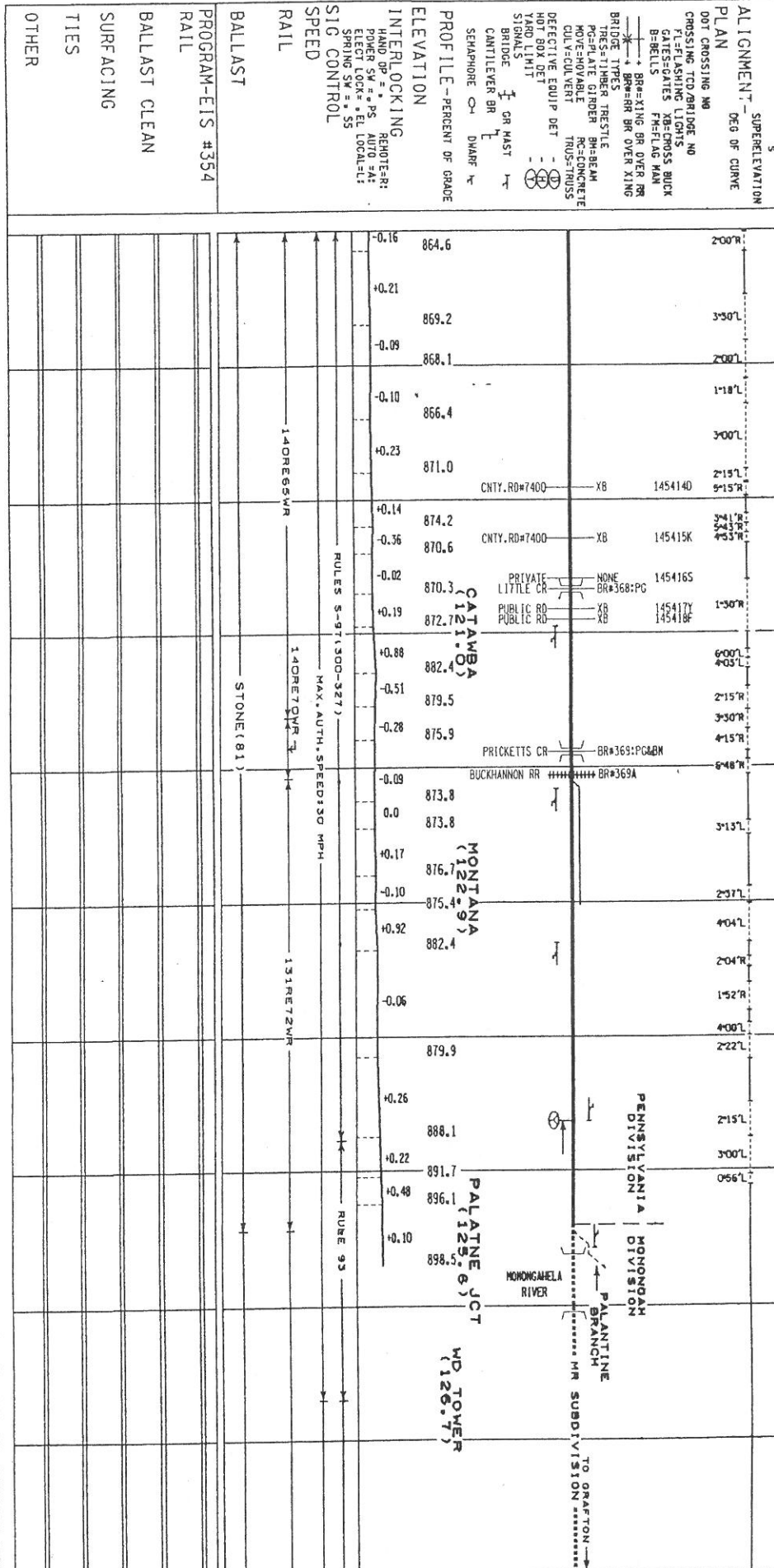
RAIL LUB. SH#26052 XB 145376W
KEYSERS RUN LR#26052 BR#355-1/2:ARCH 1453770
THIRD ST XB 145378K
LR#26052 XB 145379S
US#119 CHEAT RIVER PUBLIC ROAD BR#356:PG&TRES 145381T
FREELING ST XB 145382A
SABLE CR XB 145383G
(US#115 PENN BROADWAY ST) XB 145384N
CAMP RUN BR#356A:ARCH 145385C
FIFTH AVE XB 145387J
STONES RUN PUBLIC ROAD BR#357:PG 145388R
BUFFALO POND RUN BR#357A:PIPE 145389X
PUBLIC RD XB 145389X
PRIVATE NONE 145390S
LICK RUN BR#357B:ARCH 145391Y
LAUREL RUN BR#358:PG 145391Y
ROCKWELLS RUN FOURTH ST BR#358A:ARCH 145391Y
WEST RUN BR#359:PG 145391Y

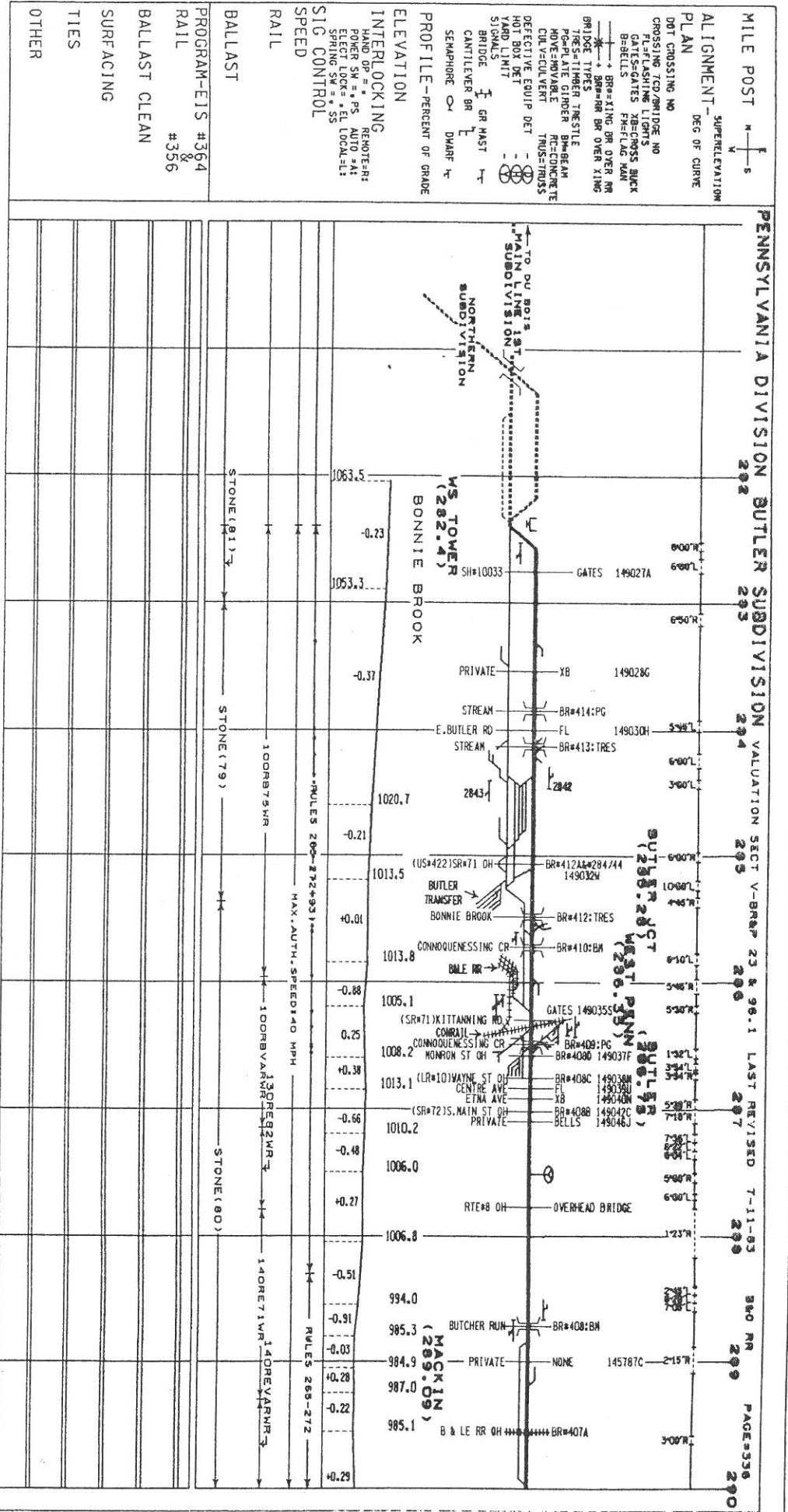
RAIL
BALLAST
PROGRAM-EIS #354
RAIL
BALLAST CLEAN
SURFACING
TIERS
OTHER

MILE POST N
↑
E
 ALIGNMENT - SUPERELEVATION
 PLAN DEG OF CURVE
 CROSSING TCD/BRIDGE NO
 DOT CROSSING NO
 FL=FLASHING LIGHTS
 GATES/GATES XB=CROSS BUCK
 B-BELLS FH=FLAG MAN
 BRIDGE TYPE=RR BR OVER XING
 BRIDGE TYPE=TRUS
 MOV=MOVABLE RC=CONCRETE
 CUL=CULVERT TRUS=TRUSS
 DEFECTIVE EQUIP DET
 HOT BOX DET
 YARD LIMIT
 SIGNALS
 BRIDGE I GR MAST
 CANTILEVER BR
 SEMAPHORE OR DWARF
 PROFILE - PERCENT OF GRADE
 ELEVATION
 INTERLOCKING
 HAND OP =
 POWER SW = PS
 AUTO = AI
 ELEC LOCK = EL LOCAL
 SPRING SW = SS
 SIG CONTROL
 RAIL
 BALLAST
 PROGRAM-EIS #354
 RAIL
 BALLAST CLEAN
 SURFACING
 TIES
 OTHER





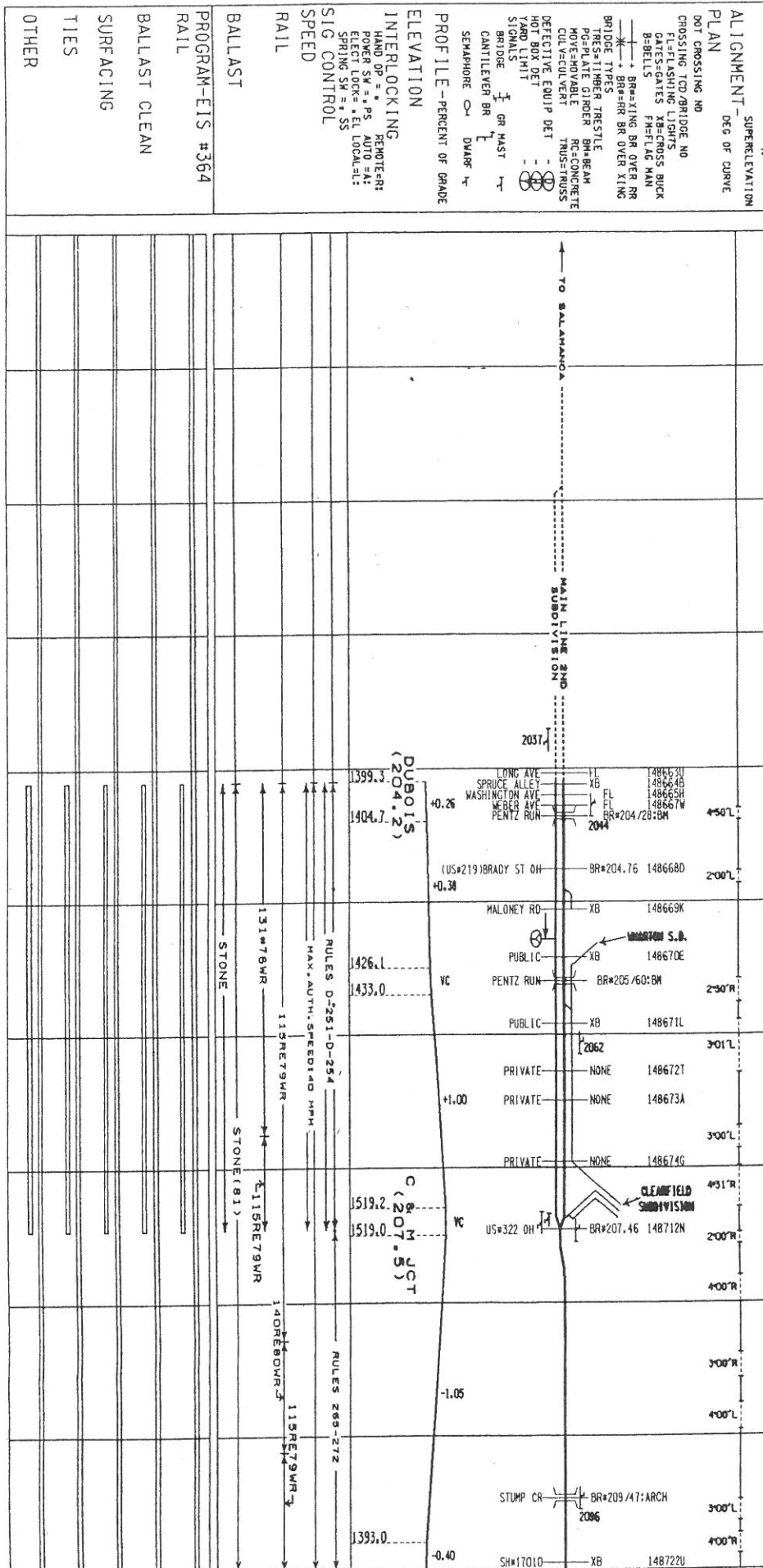




MILE POST $\frac{N}{S}$
 SUPERELEVATION
 ALIGNMENT - DEG OF CURVE
 PLAN
 CROSSING TO/OVER NO
 CLEARING LIGHTS
 FLASHING LIGHTS
 BELLS
 BR#-XING BR OVER XING
 BR#-RA BR OVER XING
 BRIDGE TYPES
 TRES-TIMBER TRUSSE
 PG-PLATE GIRDER BM-BEAM
 MOV-MOVABLE RC-CONCRETE
 CUL-VERTICAL TRUSSE-TRUSS
 DEFECTIVE EQUIP DET
 HOT BOX DET
 YARD LIMIT
 SIGNALS
 BRIDGE
 CANTILEVER BR
 SEMAPHORE OR DSHAF
 PROFILE - PERCENT OF GRADE
 ELEVATION
 INTERLOCKING
 HAND OP = * PS AUTO = AT
 POWER SW = * PS AUTO = AT
 ELECT LOCK = * EL LOCAL = L
 SPRING SW = * SS
 SIG CONTROL
 SPEED
 RAIL
 BALLAST
 PROGRAM-EIS #364
 RAIL #356
 BALLAST CLEAN
 SURFACING
 TIES
 OTHER

272

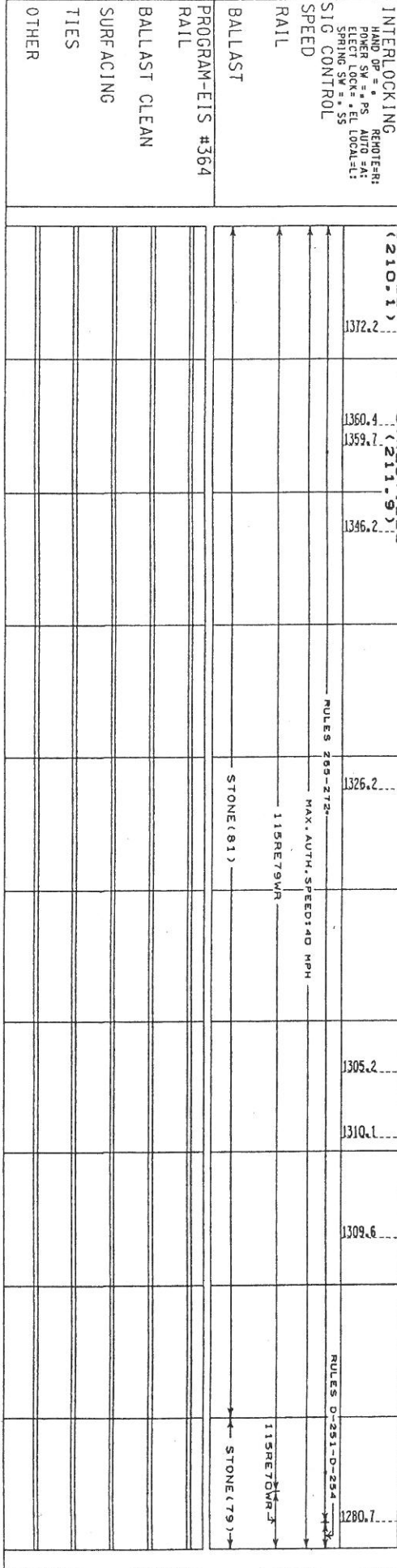
MILE POST E N S V
 ALIGNMENT - SUPERELEVATION
 PLAN DEG OF CURVE
 PENNSYLVANIA DIVISION MAIN LINE 1ST SUBDIVISION VALUATION SECT V-9 BR&P LAST REVISED 8-1-83 B&O RR PAGE #339
 204 205 206 207 208 209 21



275

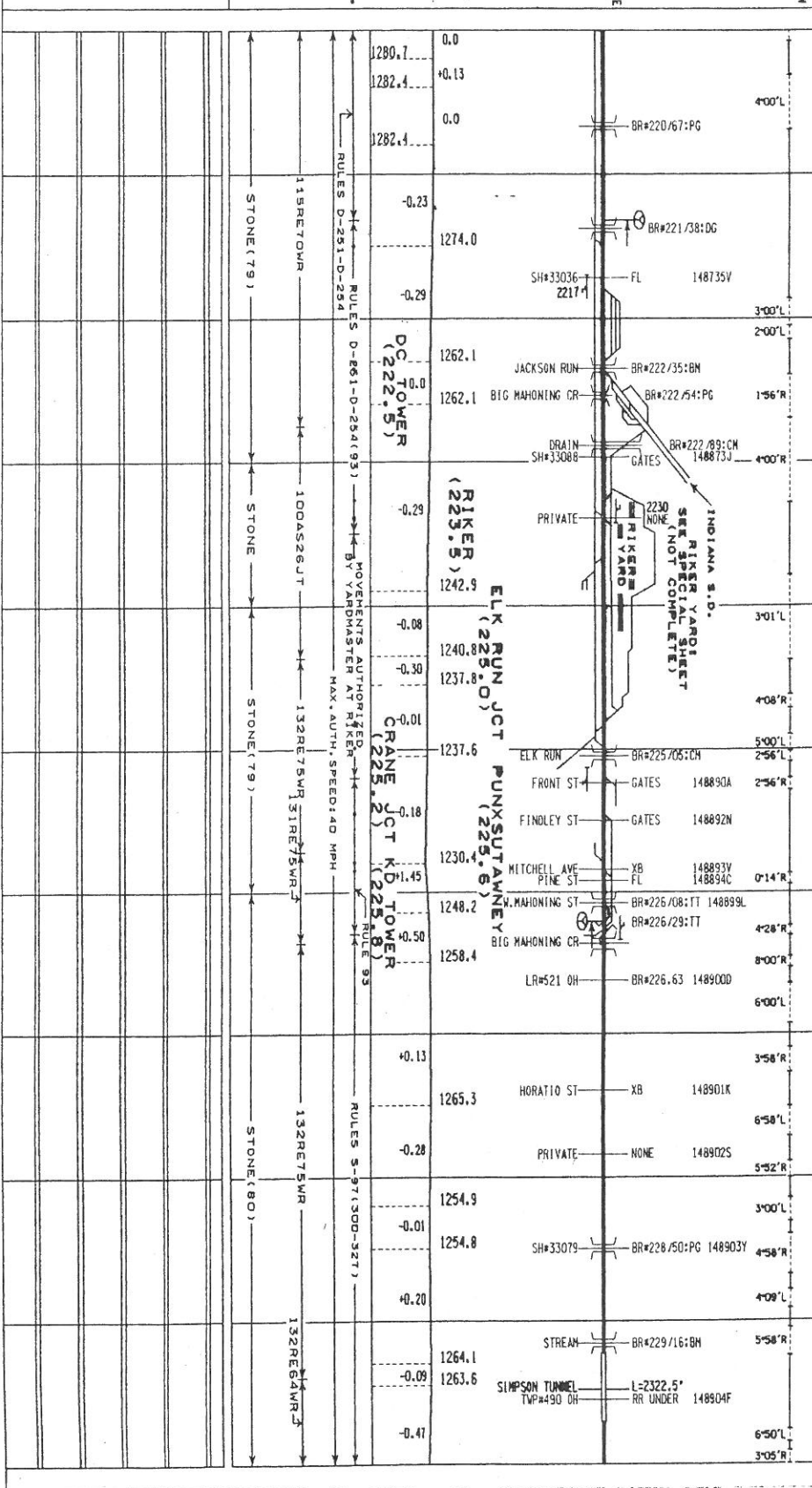
MILE POST $\frac{E}{N} \frac{V}{S}$
 SUPERELEVATION
 ALIGNMENT DEG OF CURVE
 PLAN
 DOT CROSSING NO
 CROSSING ID/BRIDGE NO
 CATEGORIES: XB=CROSS BUCK
 B=BELLS FH=FLAG HAM
 + BR=BR BR OVER KING
 BRIDGE TYPES
 TR=TIMBER TR=STEEL
 PG=PLATE GIRDER BH=BEAM
 MOVE=MOVABLE RC=CONCRETE
 CUL=CULVERT TRUS=TRUSS
 DEFECTIVE EQUIP DET
 HOT BOX DET
 YARD LIGHT
 SIGNALS
 BRIDGE CR MAST
 CANTILEVER BR
 SEMAPHORE DWARF

PROFILE - PERCENT OF GRADE
 ELEVATION
 INTERLOCKING
 REMOTE=RI
 HAND OP = A PS
 POWER SW = A PS
 AUTO = A:
 ELECT LOCK = A EL LOCAL=L:
 SPRING SW = A SS
 SIG CONTROL
 SPEED
 RAIL
 BALLAST
 PROGRAM-EIS #364
 RAIL
 BALLAST CLEAN
 SURFACING
 TIES
 OTHER



276

- ALIGNMENT - SUPERELEVATION PLAN
 DOT CROSSING NO
 CROSSING TOP/BRIDGE NO
 FL=FLASHING LIGHTS
 GATES-GATES
 B=BELLS
 + BR=XING BR OVER RR
 - BR=XING BR UNDER RR
 BRIDGE-TYPER, TRUSSE
 HOVE=MOVABLE
 CULV=CULVERT
 DEFECTIVE EQUIP DET
 HOT BOX DET
 YARD LIMIT
 SIGNALS
 BRIDGE
 CANTILEVER BR
 SEMAPHORE C-D
 DN&P R

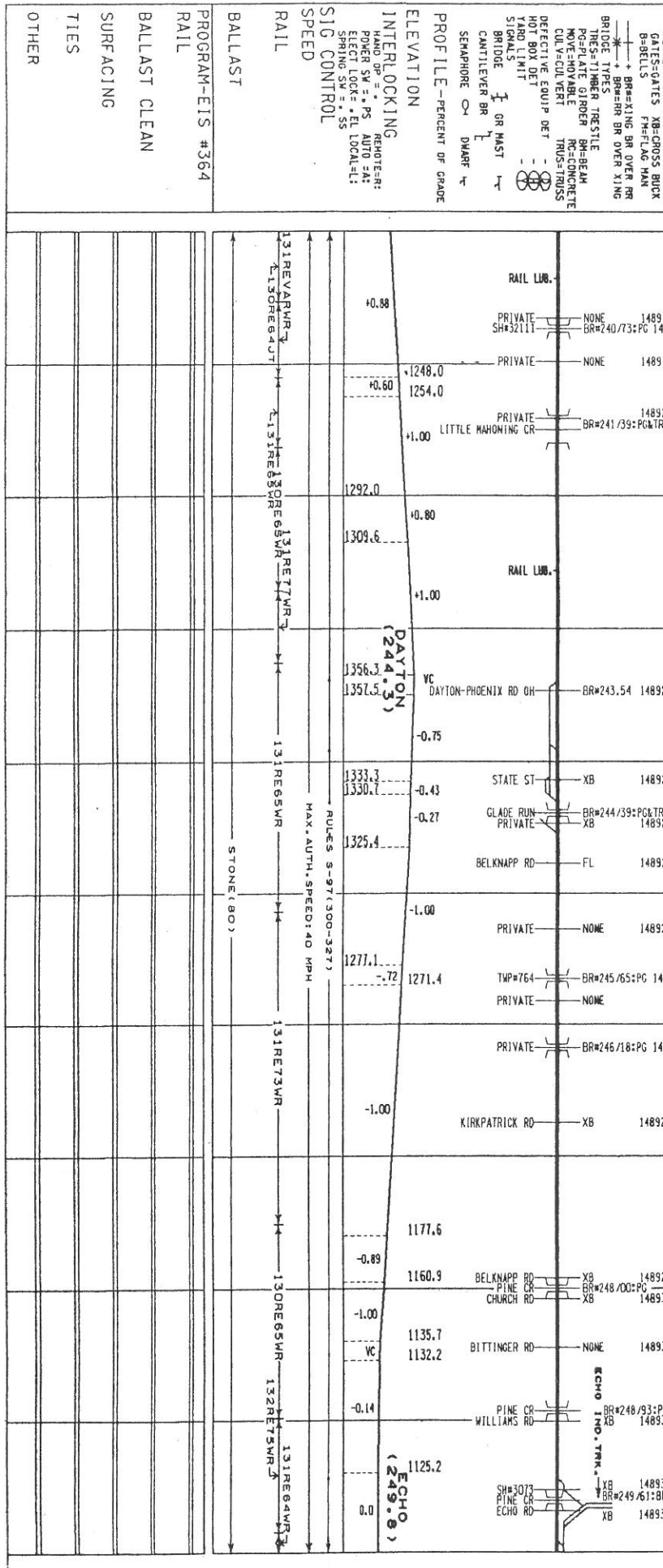


- PROFILE - PERCENT OF GRADE
 INTERLOCKING
 REMOTE=RR
 HAND OP = *A
 POWER SW = *PS
 AUTO SA1
 ELECT LOCK = *EL
 LOCAL=LL
 SPRING SW = *S
 SIG CONTROL
 RAIL
 BALLAST
 PROGRAM-EIS #364
 RAIL
 BALLAST CLEAN
 SURFACING
 TIES
 OTHER

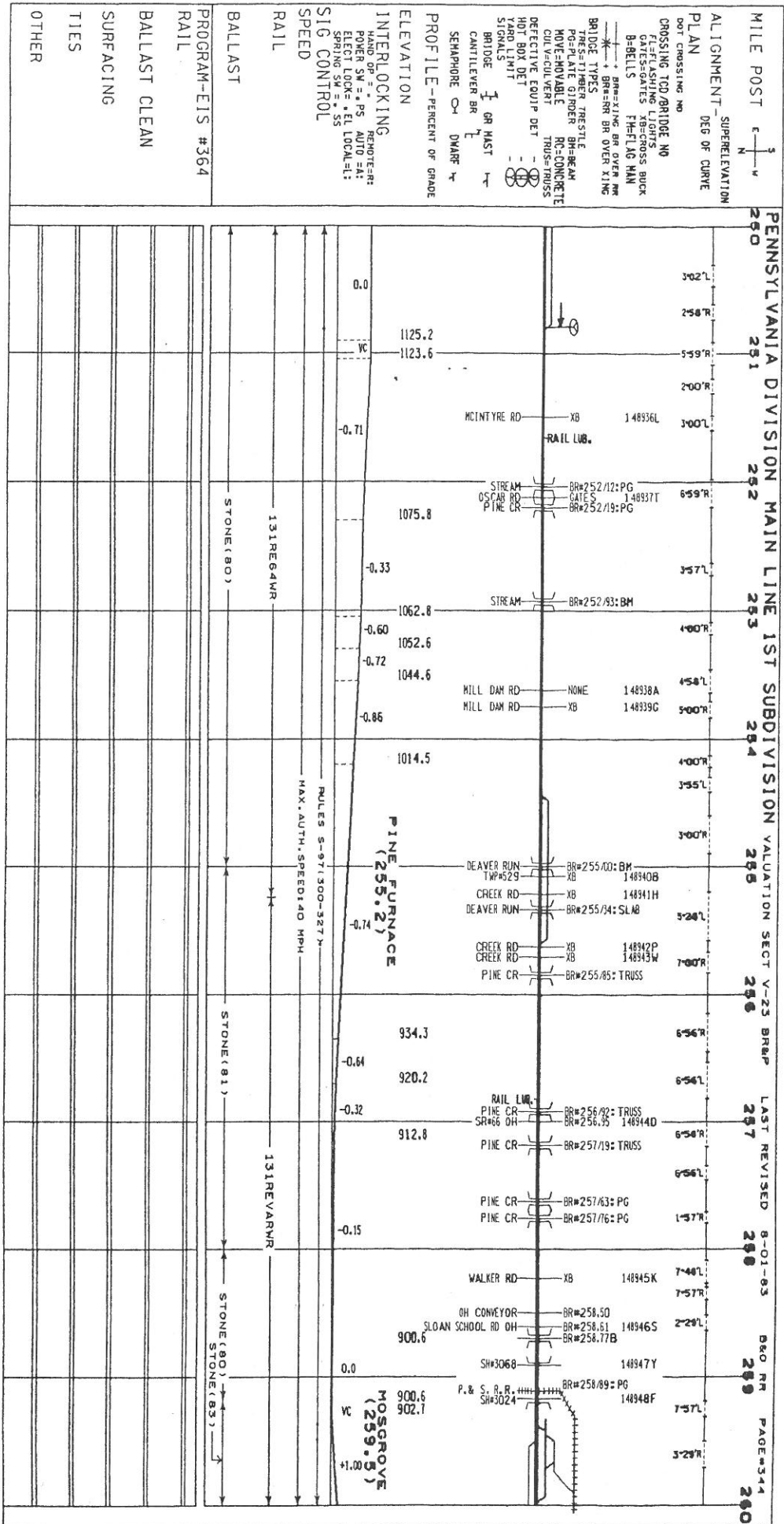
277

MILE POST $\frac{E}{N}$ $\frac{S}{V}$ SUPERELEVATION
 ALIGNMENT DEG OF CURVE
 PLAN
 DOT CROSSING NO
 CROSSING TO/BRIDGE NO
 FLASHING LIGHTS
 GATE-GATES
 PHELAG MAN
 BELLS
 BR=BR OR OVER XING
 BRIDGE TYPES
 TRES-TIMBER TRESTLE
 PEPLATE GIRDER
 RC=CONCRETE
 TRUS=TRUSS
 DEFECTIVE EQUIP DET
 HOT BOX DET
 YARD LIMIT
 SIGNALS
 BRIDGE
 I OR MAST
 CANTILEVER BR
 L
 SEMAPHORE
 O
 DIAPHR
 T

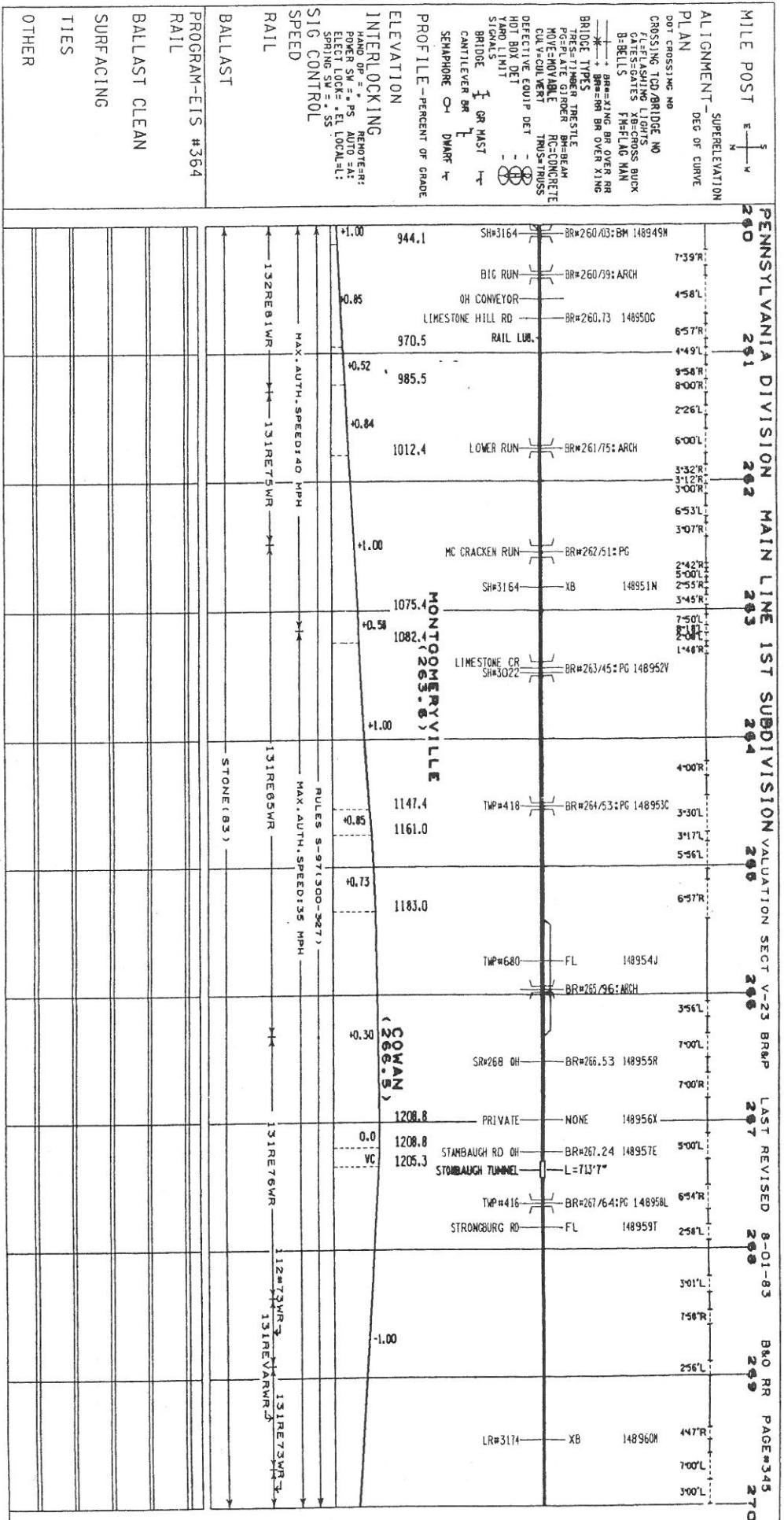
PROF ILE - PERCENT OF GRADE
 ELEVATION
 INTERLOCKING
 HAND OP = * PS
 REMOTE = R
 POWER SW = * P3
 AUTO SA:
 ELECT LOCK = * EL
 LOCAL = L:
 SPRING SW = * S3
 SIG CONTROL
 SPEED
 RAIL
 BALLAST
 PROGRAM-EIS #364
 RAIL
 BALLAST CLEAN
 SURFACING
 TIES
 OTHER

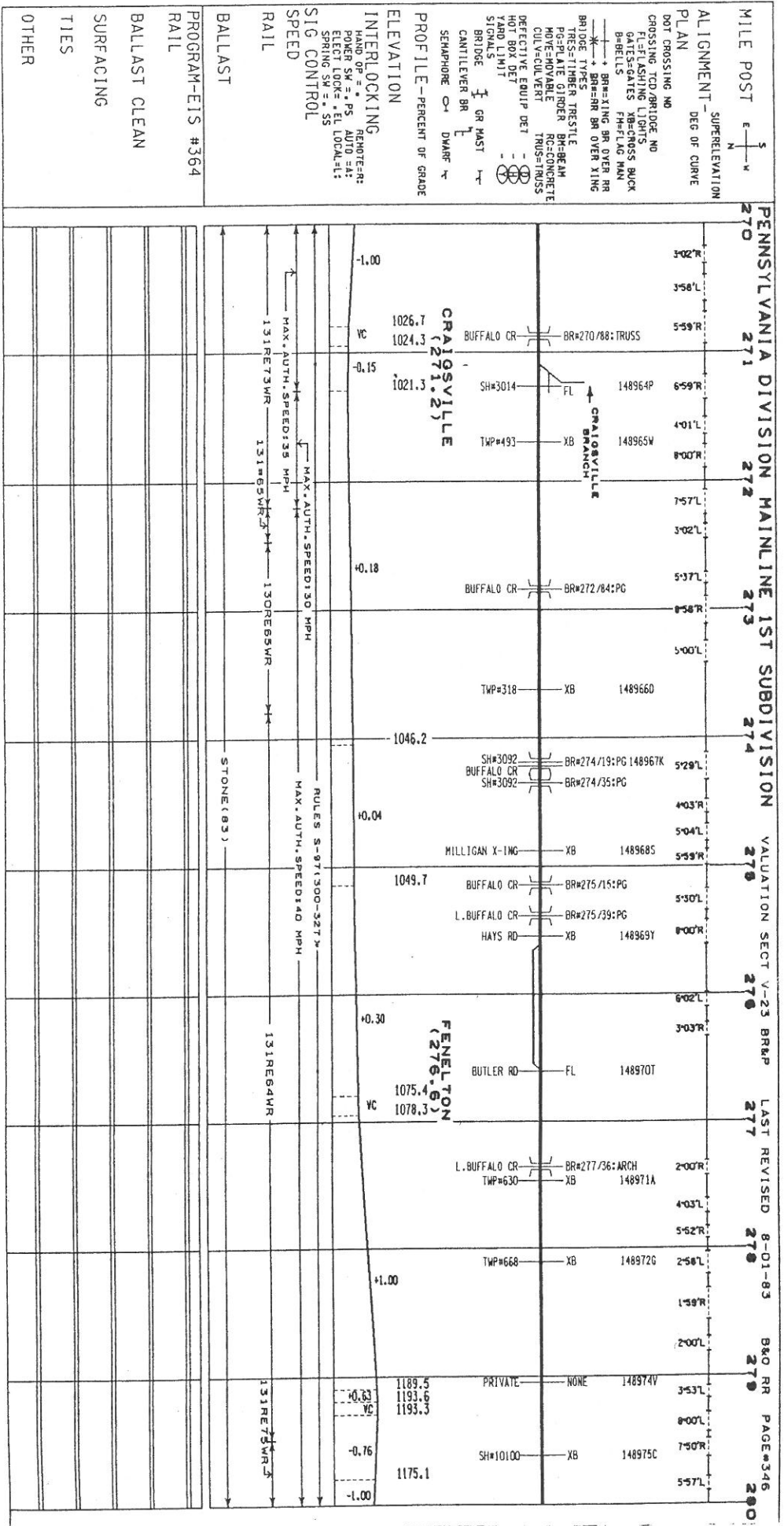


PENNSYLVANIA DIVISION MAIN LINE 1ST SUBDIVISION
 VALUATION SECT V-23 BR&P LAST REVISED 8-01-63 B&O RR PAGE#343
 240 241 242 243 244 245 246 247 248 249 250



280





282

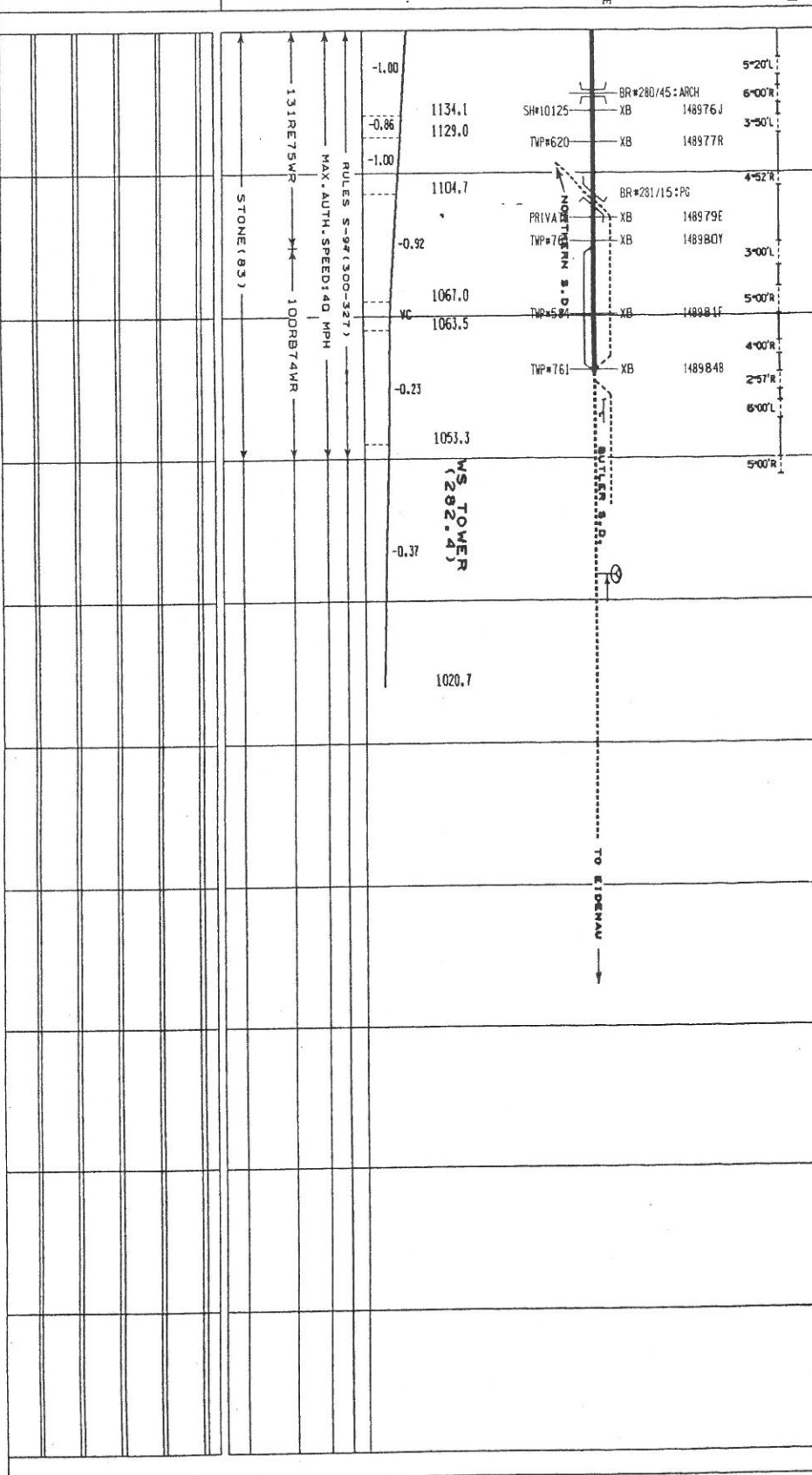
ALIGNMENT - SUPERELEVATION
PLAN DEG OF CURVE

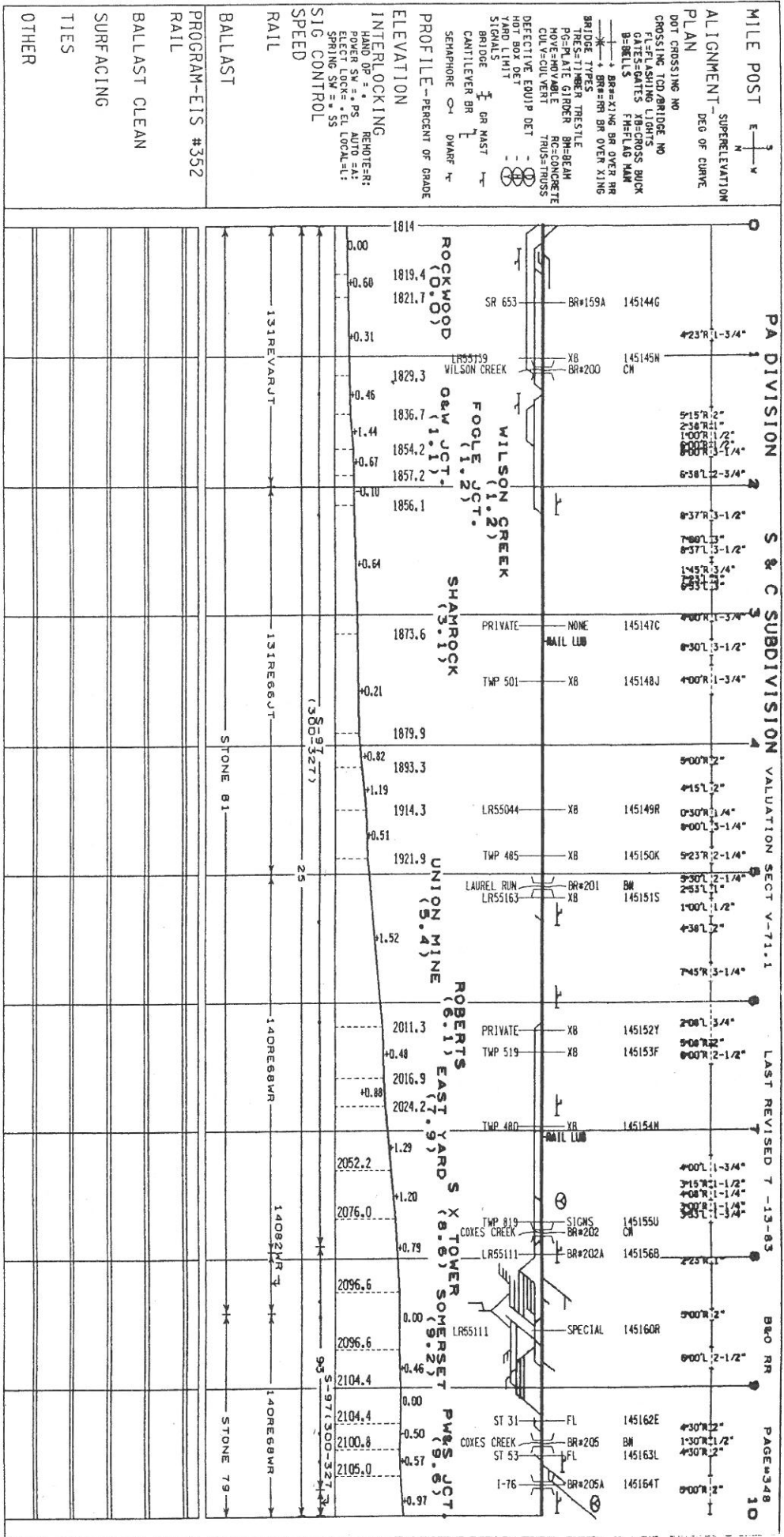
PENNSYLVANIA DIVISION MAIN LINE 1ST SUBDIVISION VALUATION SECT V-23 BR&P LAST REVISED 8-01-83 B&O RR PAGE 347

DOT CROSSING NO
CROSSING TO/BRIDGE NO
FL=FLASHING LIGHTS
GATES=GENIES XB=CROSS BUCK
B=DELLS FH=FLAG MAN
+ BR=XING BR OVER XR
BRIDGE TYPE=RR BR OVER XING
TIE=TIMBER TRESTLE
PERMANENT GIBBER BR=BEAM
MOVABLE RC=CONCRETE
CUL=V-CULVERT TRUS=TRUSS
DEFECTIVE EQUIP DET
HOT BOX DET
YARD LIGHT
SIG=ALS
BRIDGE
CANTILEVER BR
SEMAPHORE
DWARF

PROFILE - PERCENT OF GRADE
ELEVATION
INTERLOCKING
HAND OP = * REMOTE: R
POWER SW = . PS. AUTO = A.
ELECT LOCK = . EL LOCAL = L.
SPRING SW = . S
SIG CONTROL

BALLAST
PROGRAM-EIS #364
RAIL
BALLAST CLEAN
SURFACING
TIES
OTHER

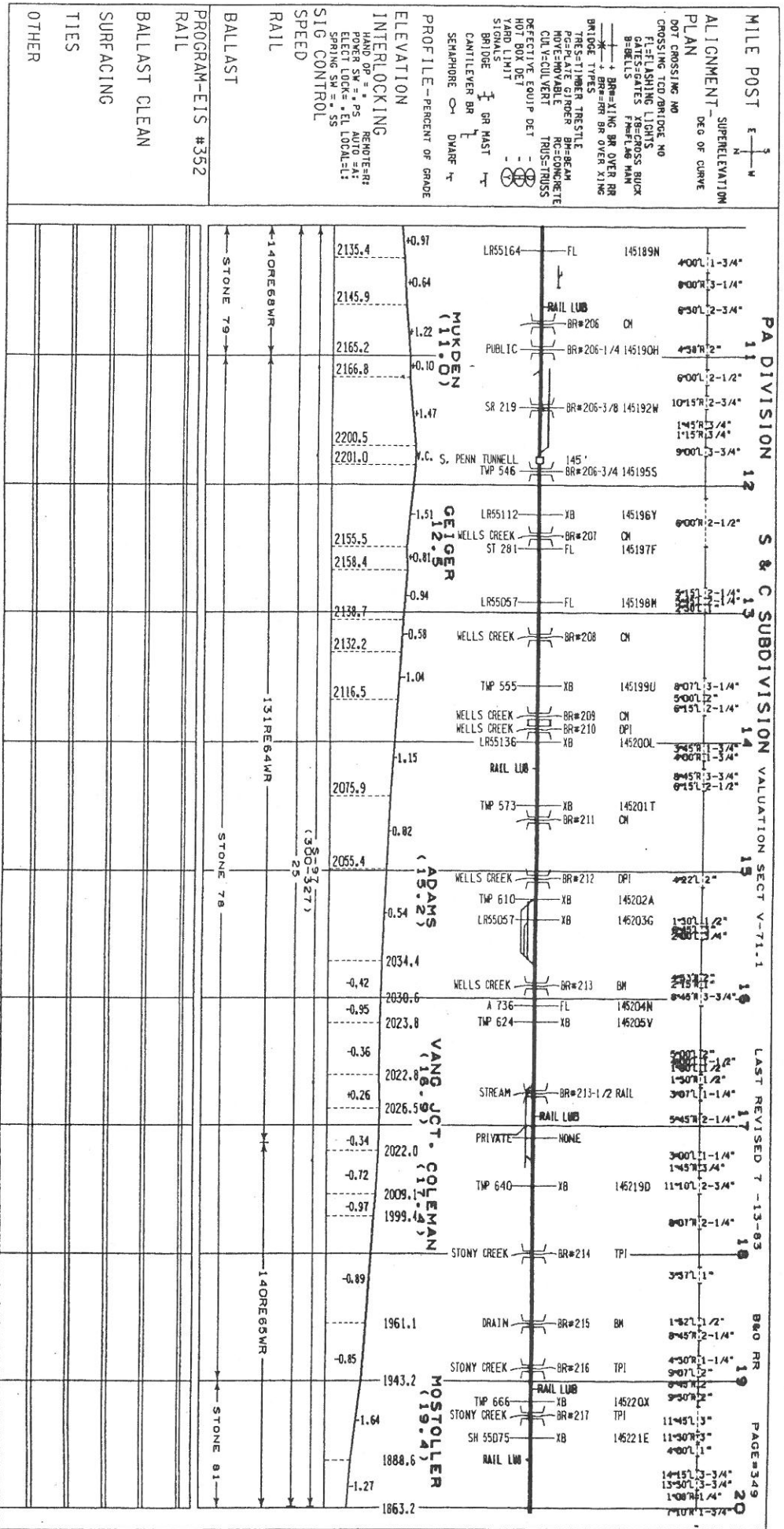




MILE POST E N S
 ALIGNMENT - SUPERELEVATION
 PLAN DEG OF CURVE
 CROSSING TO BRIDGE NO
 FLASHING LIGHTS
 GATES-GATES XB=CROSS BUCK
 B=DRILLS F=FLAG MAN
 * = BR=BRIDGE BR OVER XING
 BRIDGE TYPES
 RESISTANCE TRESTLE
 HOVE=MOVABLE RC=CONCRETE
 CULV=CULVERT TRUS=TRUSS
 DEFECTIVE EQUIP DET
 HOT BOX DET
 YARD LIMIT
 SIGNALS
 BRIDGE I OR MAST
 CANTILEVER BR L
 SEMAPHORE O DMARF T
 PROFILE - PERCENT OF GRADE
 ELEVATION
 INTERLOCKING REMOTE:R
 HAND OP = + AUTO A:1
 POWER SW = . PS
 ELECT LOCK = . EL LOCAL=L:
 SPRING SW = . SS
 SIG CONTROL
 SPEED
 RAIL
 BALLAST
 PROGRAM-EIS #352
 RAIL
 BALLAST CLEAN
 SURFACING
 TIES
 OTHER

PA DIVISION S & C SUBDIVISION VALUATION SECT V-71.1
 LAST REVISED 7-13-83
 B&O RR
 PAGE 348
 10

284



MILE POST E N W

ALIGNMENT SUPERELEVATION
PLAN DEO OF CURVE

CROSSING NO
DOT CROSSING NO
FL-FLASHING LIGHTS
GATES-GATES XB=CROSS BUCK
B-BELLIS
BR#-XING BR OVER RR
BRIDGE-TYPES BR TRUSSTILE
POSTALTE ROEN BR-ARM
MOV-EMVABLE TRUS-TRUSS
CUL-V-CULVERT
HOT BOX DET
YARD LIMIT
BRIDGE
CANTILEVER BR
SEMAPHORE BR
DIAPHR

PROFILE--PERCENT OF GRADE

ELEVATION
INTERLOCKING
HAND OP =
POWER SW = PS
ELECT LOCK = EL LOCAL-LL
SPRING SM = S

SIG CONTROL

RAIL

BALLAST

PROGRAM-EIS #352

RAIL

BALLAST CLEAN

SURFACING

TIES

OTHER

PA DIVISION

S & C SUBDIVISION

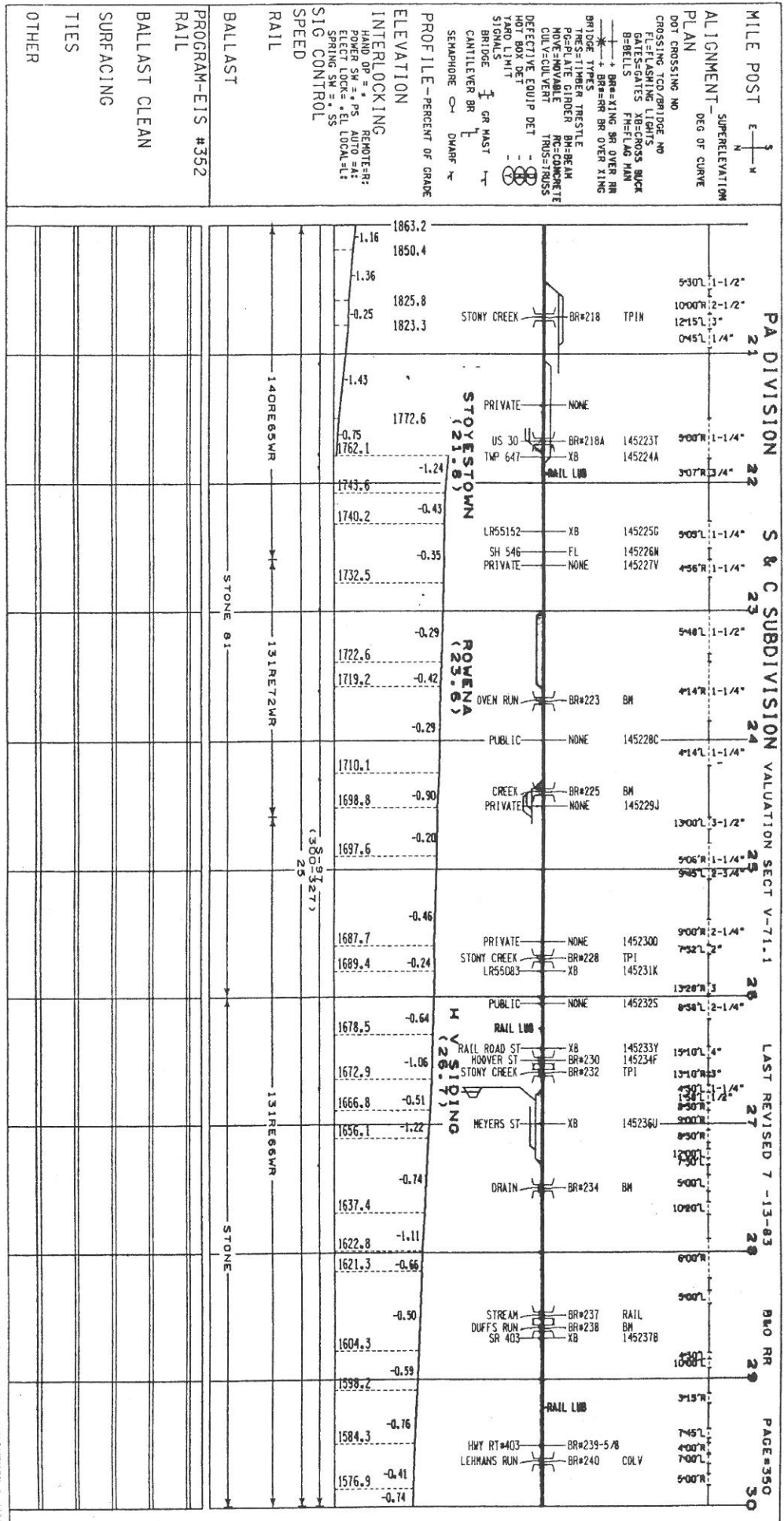
VALUATION SECT V-71.1

LAST REVISED 7-13-83

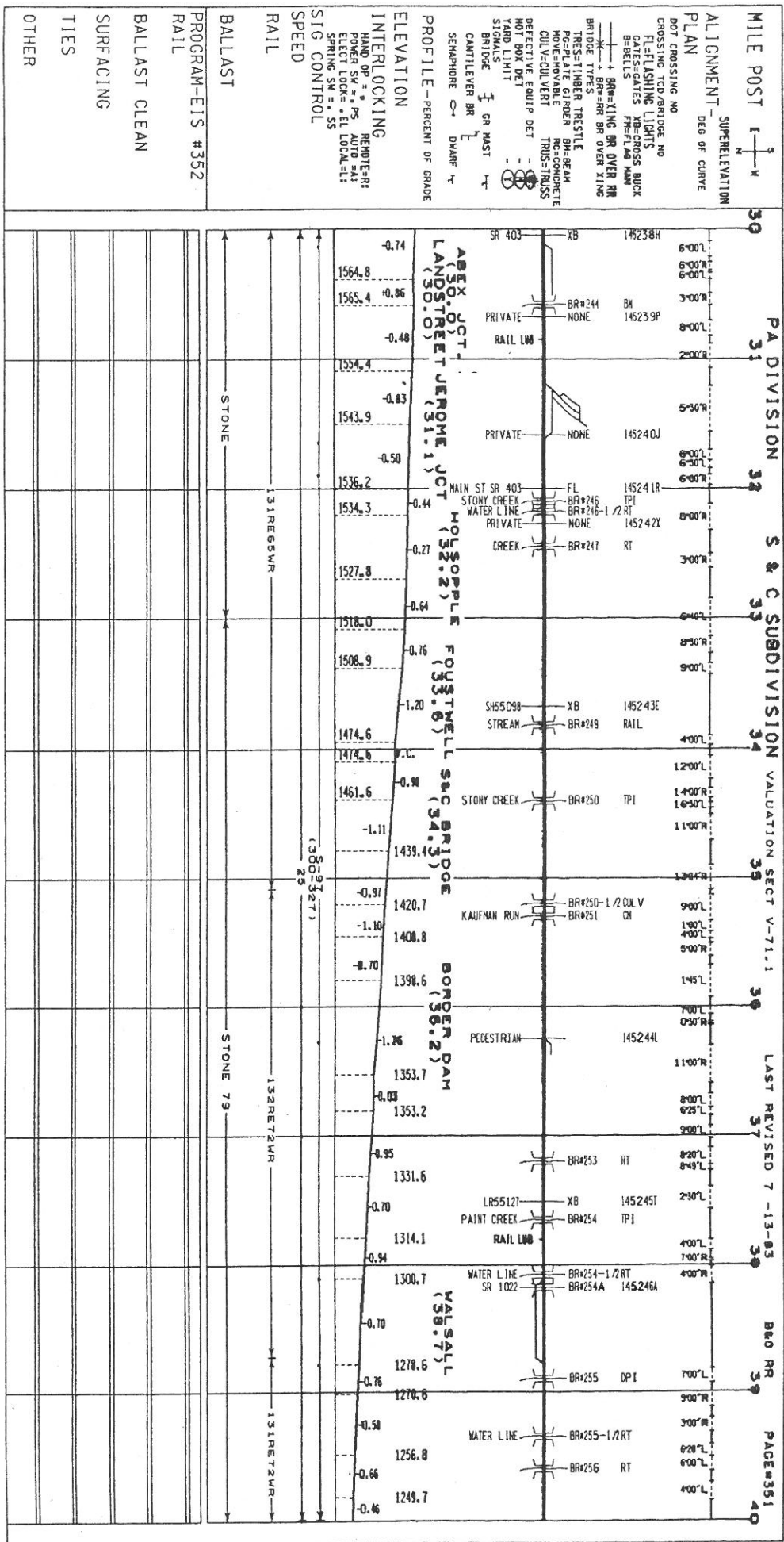
B&O RR

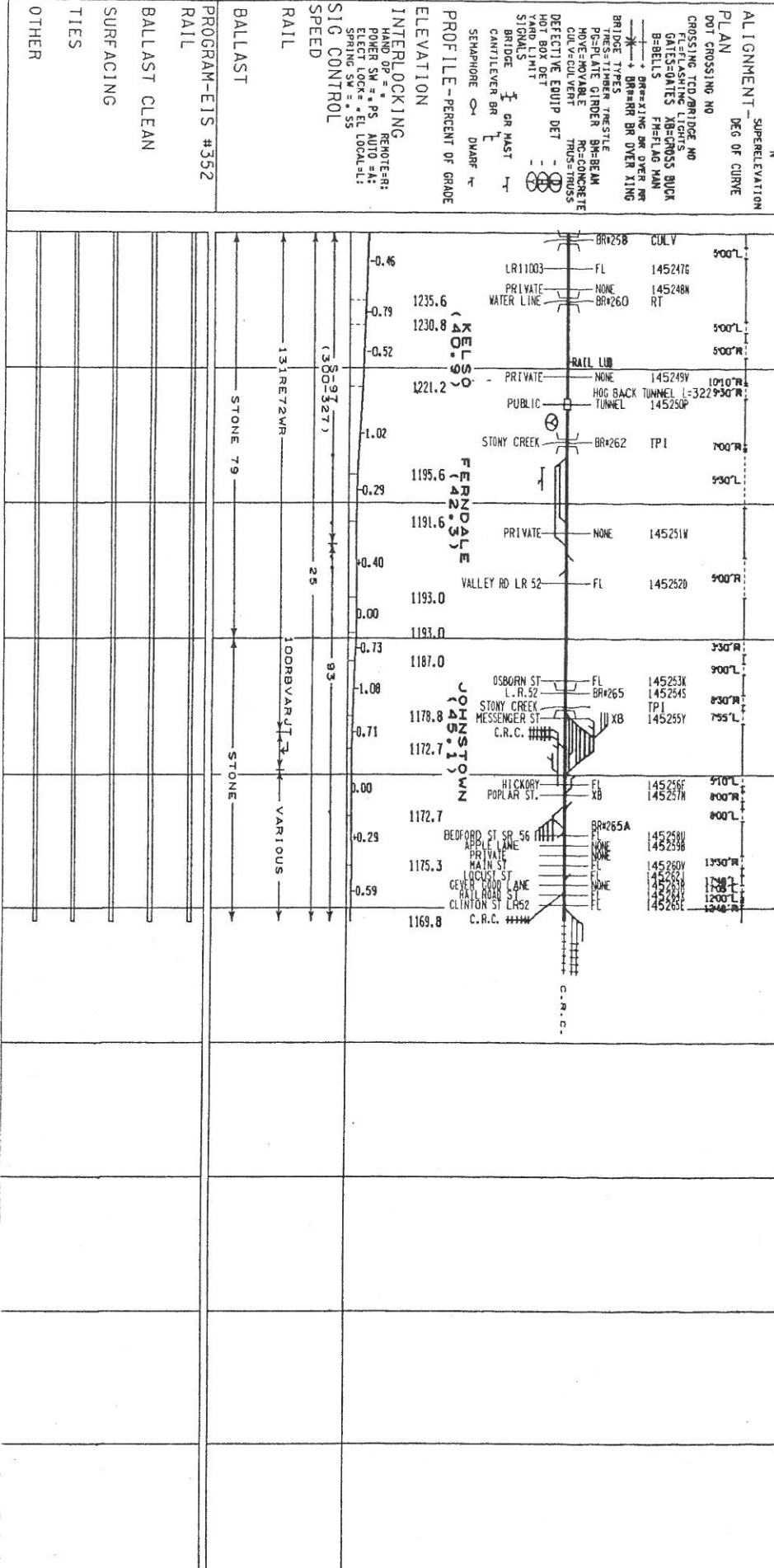
PAGE 349

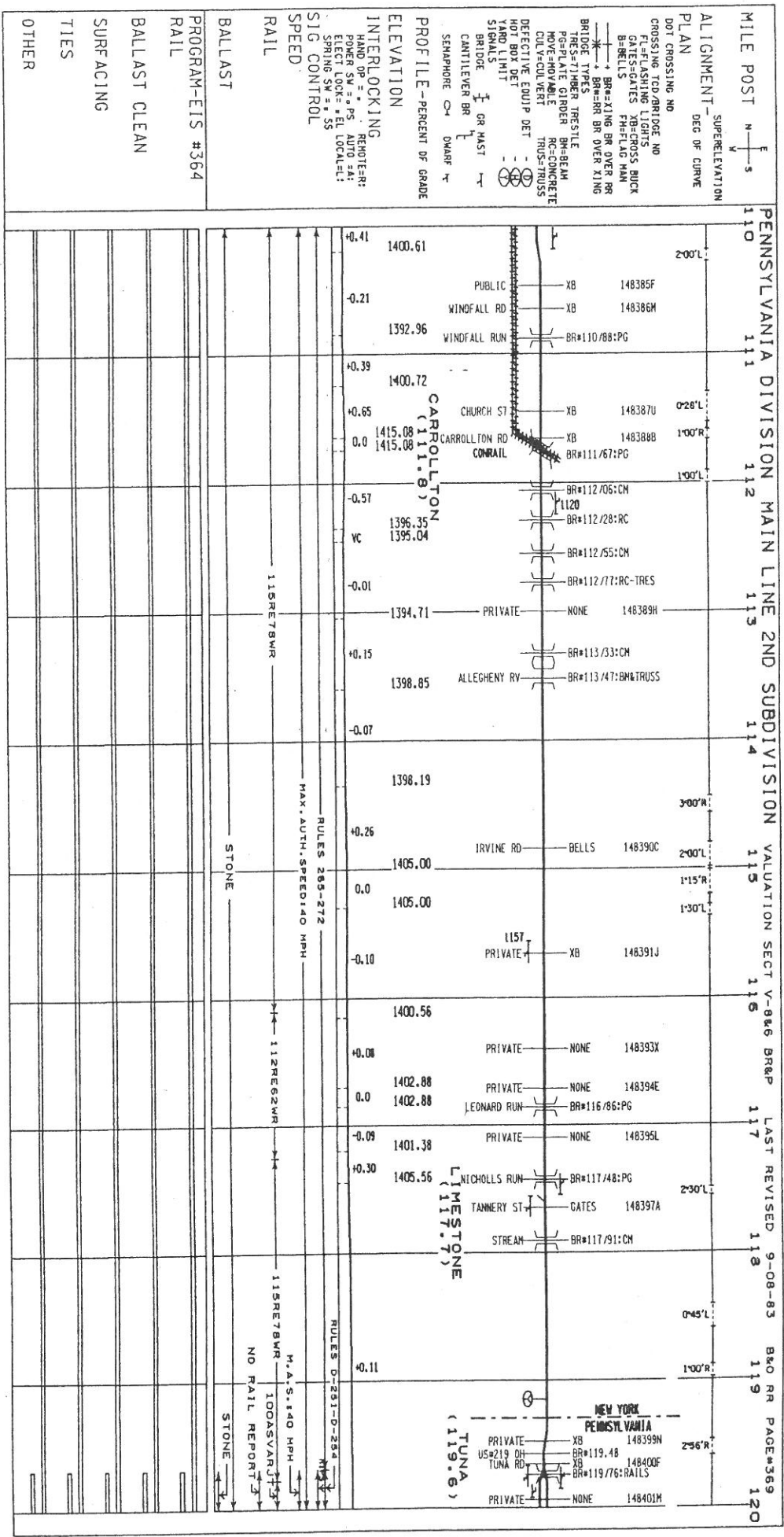
285



286







SUPERELEVATION
 ALIGNMENT - DEG OF CURVE
 PLAN
 DOT CROSSING NO
 CROSSING TOP/BIDGE NO
 FI=FLASHING LIGHTS
 GATES=GATES XB=CROSS BUICK
 B=BELLS FH=FLAG MAN
 BR=BR BR=BR OVER XING
 BR=BR BR OVER XING
 BRIDGE TYPES
 TRES=TIMBER TRES/TYLE
 PRE-PLATE GIRDER BR=BEAM
 MOVE-NOVABLE RC=CONCRETE
 COLV=COLVERT TRUS=TRUSS
 DEFECTIVE EQUIP DET
 HOT BOX DET
 SIGNAL
 CANTILEVER BR
 SEMAPHORE OR DWARF
 PROFILE - PERCENT OF GRADE
 ELEVATION
 INTERLOCKING
 HAND OP = * * * * * RHOITE=R
 POWER SW = * * * * * ADJO SA:
 ELECTR LOCK = * * * * * EL
 SIGNAL CONTROL = * * * * * S
 SIG CONTROL
 SPEED
 RAIL
 BALLAST
 PROGRAM-EIS #364
 RAIL
 BALLAST CLEAN
 SURFACING
 TIES
 OTHER

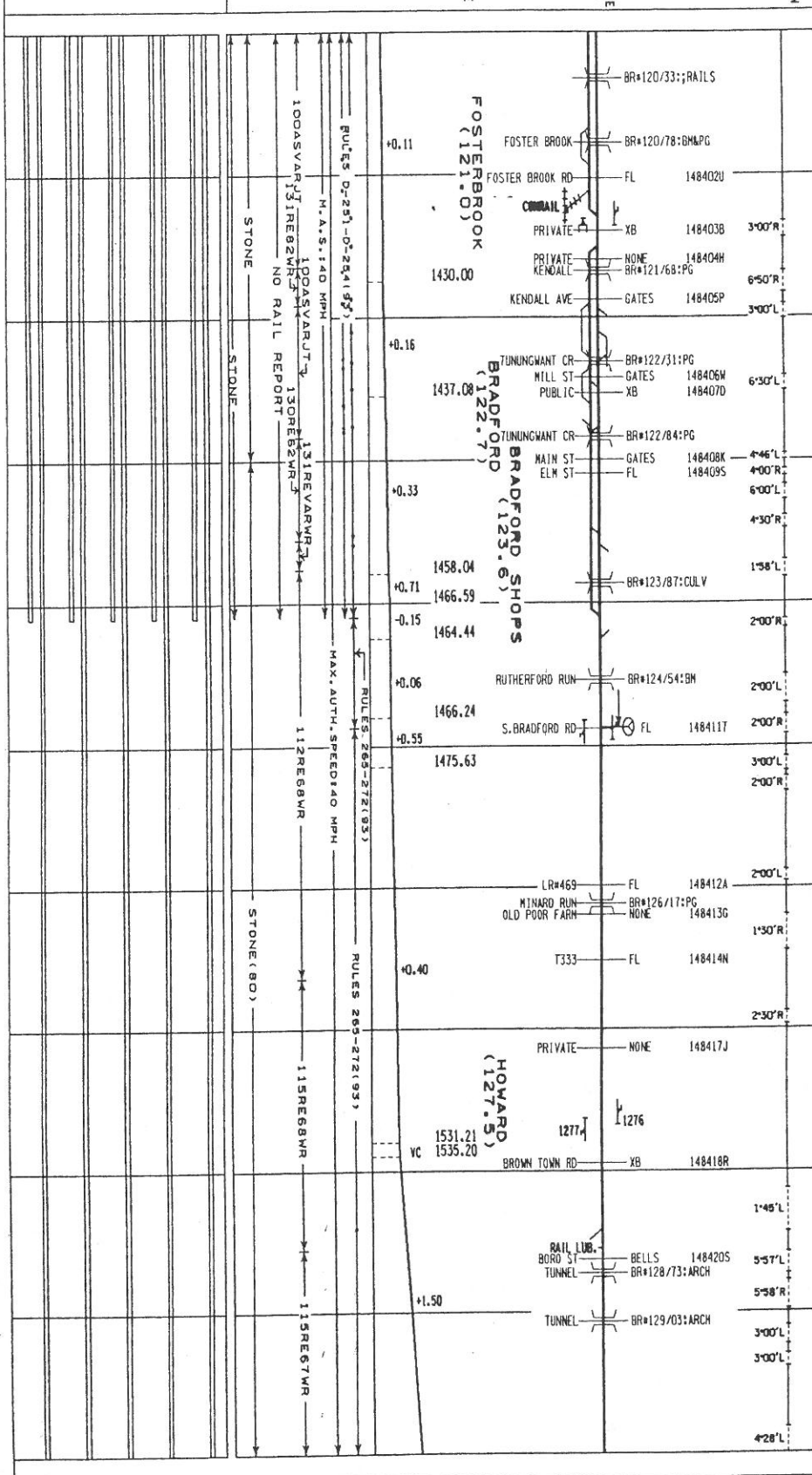
PENNSYLVANIA DIVISION MAIN LINE 2ND SUBDIVISION VALUATION SECT V-886 BR&P
 MILE POST 110 111 112 113 114 115 116 117 118 119 120
 LAST REVISED 9-08-83 B&O RR PAGE#369

MILE POST E
 ALIGNMENT - S
 SUPERELEVATION
 PLAN M
 DEG OF CURVE

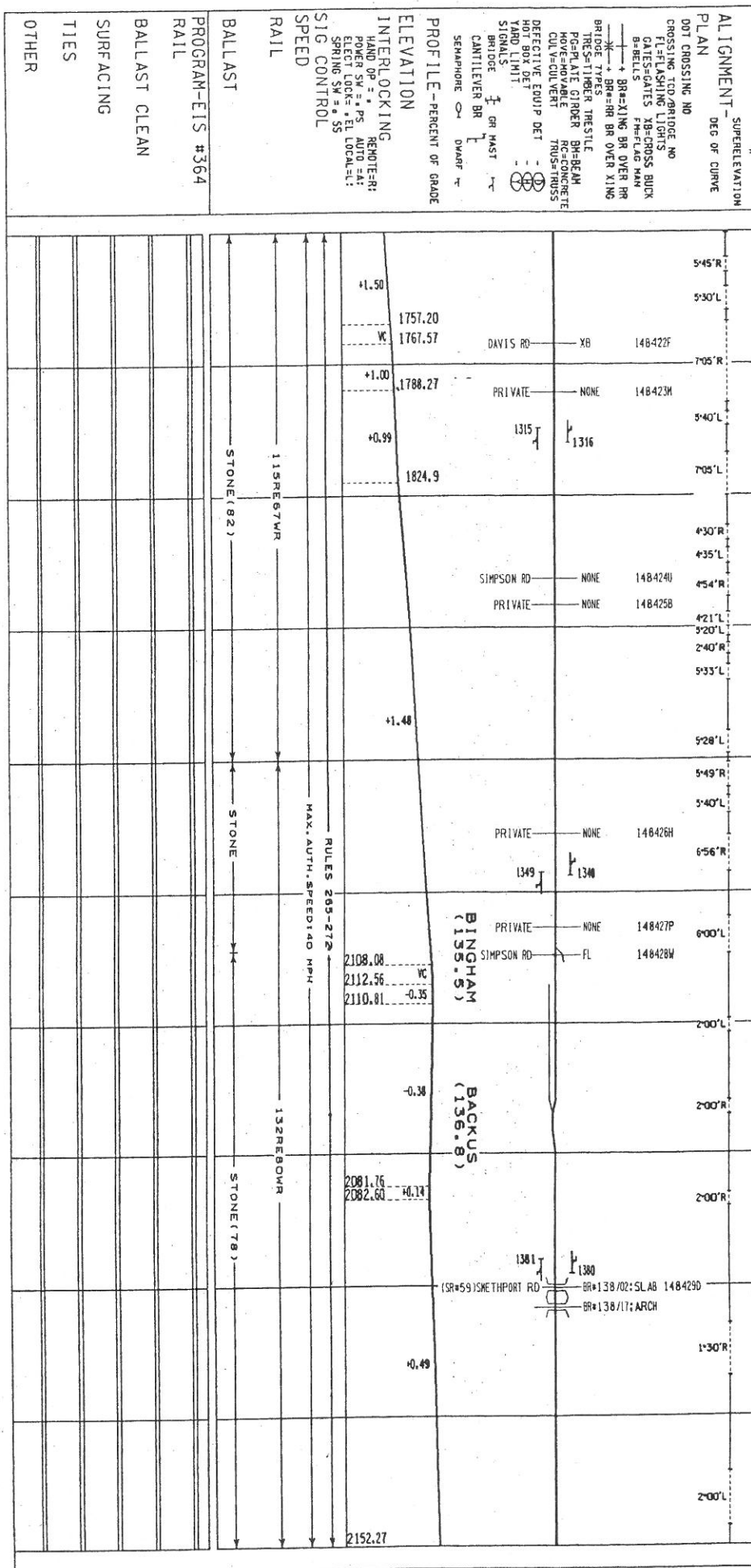
DOT CROSSING NO
 CROSSING TO/BRIDGE NO
 FL=FLASHING LIGHTS
 GATES=GATES XB=CROSS BUCK
 B=BELLS FM=FLAG MAN
 + BR=BR BR OVER RR
 * BR=XING BR OVER XING
 BRIDGE TYPES
 TRES=TIMBER TRUSSTIE
 HOV=HOV BEAM
 HOV=HOV BEAM
 CUL=CULVERT
 TRUS=TRUSS
 DEFECTIVE EQUIP DET
 HOT BOX DET
 YARD LIMIT
 SIGNALS
 BRIDGE 1/2 GR HAST
 CANTILEVER BR L
 SEMAPHORE O DWARF T

INTERLOCKING
 HAND OP = REMOTE
 POWER SM = PS AUTO = A
 ELECT LOCK = EL LOCAL = L
 SPRING SW = S5
 SIG CONTROL
 SPEED
 RAIL
 BALLAST
 PROGRAM-EIS #364
 RAIL
 BALLAST CLEAN
 SURFACING
 TIES
 OTHER

PENNSYLVANIA DIVISION MAIN LINE 2ND SUBDIVISION VALUATION SECT V-8 BR&P LAST REVISED 9-08-83 B&O RR PAGE#370
 120 121 122 123 124 125 126 127 128 129 130



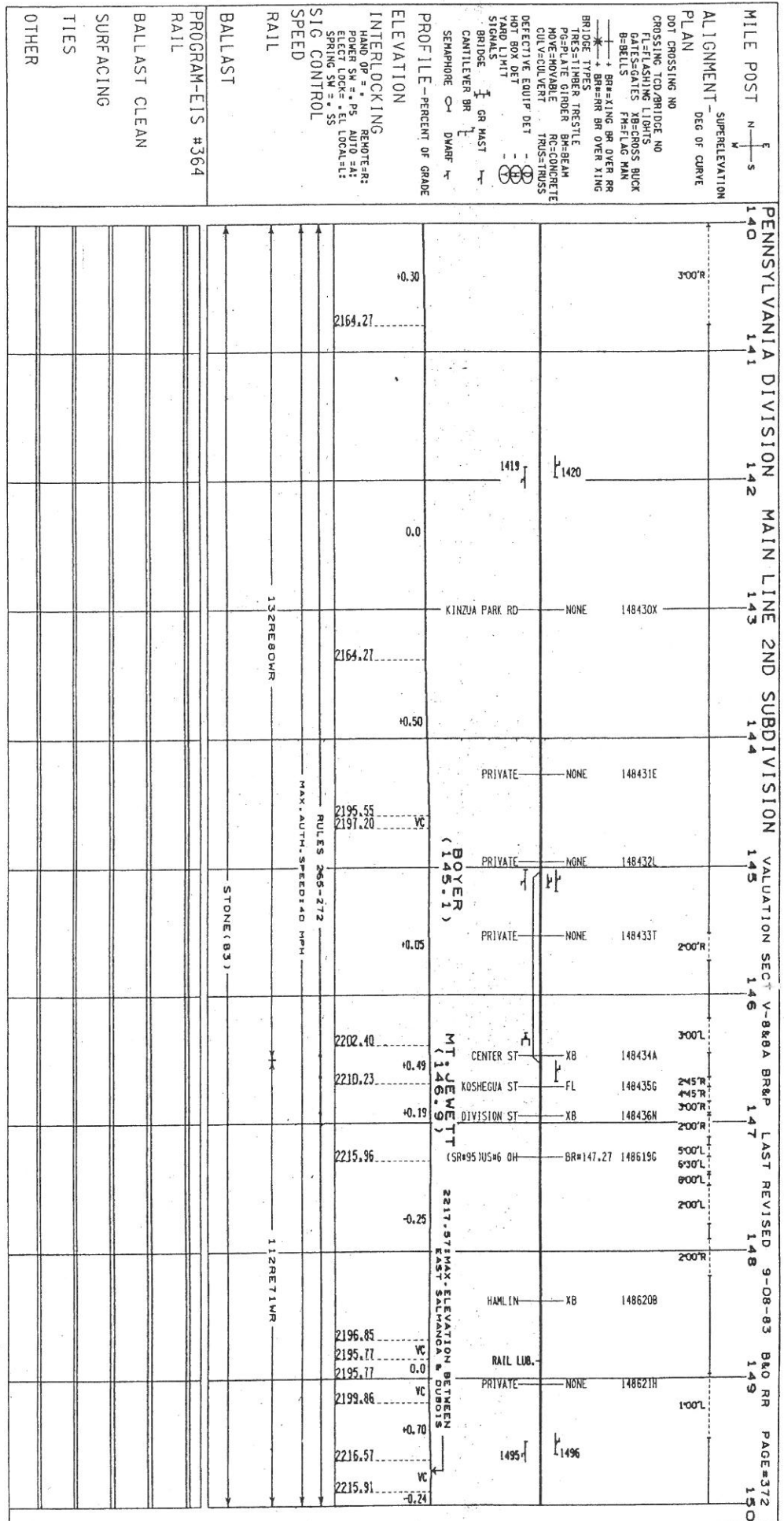
MILE POST N S
 130 131 132 133 134 135 136 137 138 139 140
 PENNSYLVANIA DIVISION MAIN LINE 2ND SUBDIVISION VALUATION SECT V-8 BR&P LAST REVISED 9-08-83 B&O RR PAGE#371

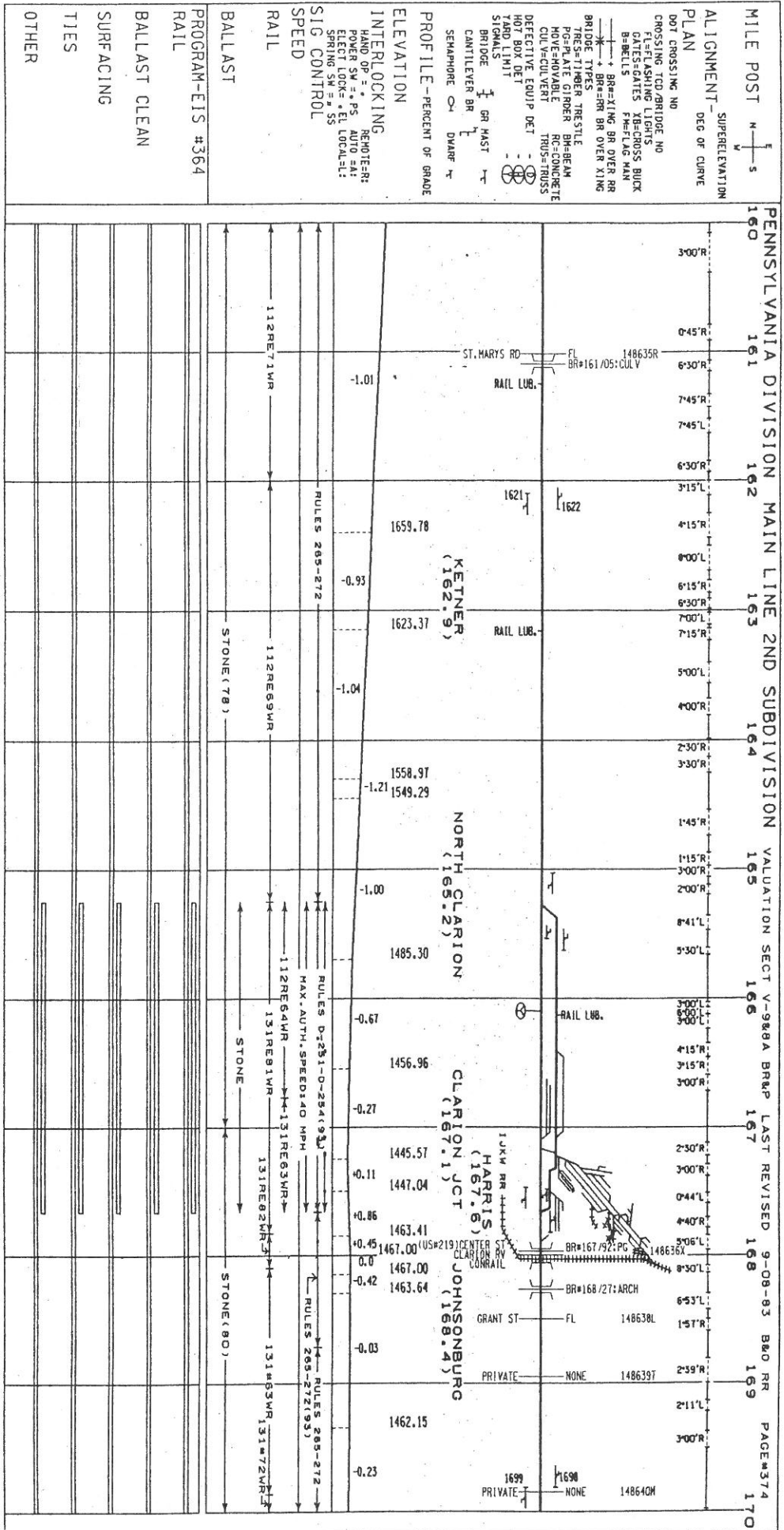


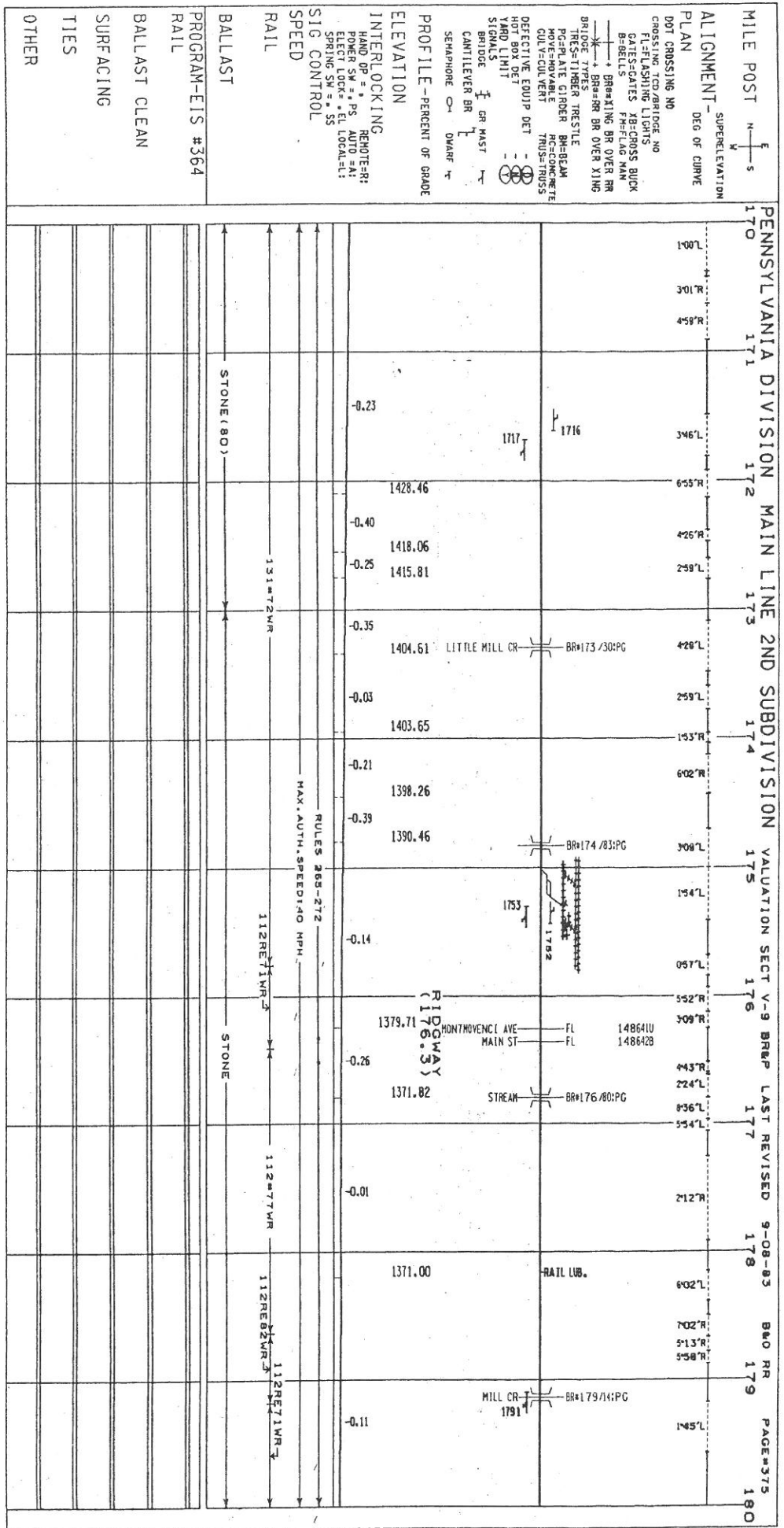
SUPERELEVATION
 ALIGNMENT DEG OF CURVE
 PLAN
 DOT CROSSING NO
 CROSSING TOC/BRIDGE NO
 FL=LASHING LIGHTS
 GATES=GATES XB=CROSS BUCK
 B=BELTS F=FLAG MAN
 BR=BR BR OVER RR
 BR=BR BR OVER XING
 BRIDGE TIES BR
 BR=TYPE BR
 POSTAL TIES BR
 POSTAL TIES BR
 MOVE=MOVABLE
 CULV=CULVERT
 TRUS=TRUSS
 DEFECTIVE EQUIP DET
 HOT BOX DET
 YARD LIMIT
 SIGNALS
 BRIDGE
 CANTILEVER BR
 SEMAPHORE
 DWAAP

PROFILE - PERCENT OF GRADE
 INTERLOCKING
 HAND OP = * * *
 POWER SW = * * *
 ELECT LOCK = * * *
 SPRING SW = * * *
 REMOTE-R:
 AUTO EA:
 EL LOCAL:
 SS

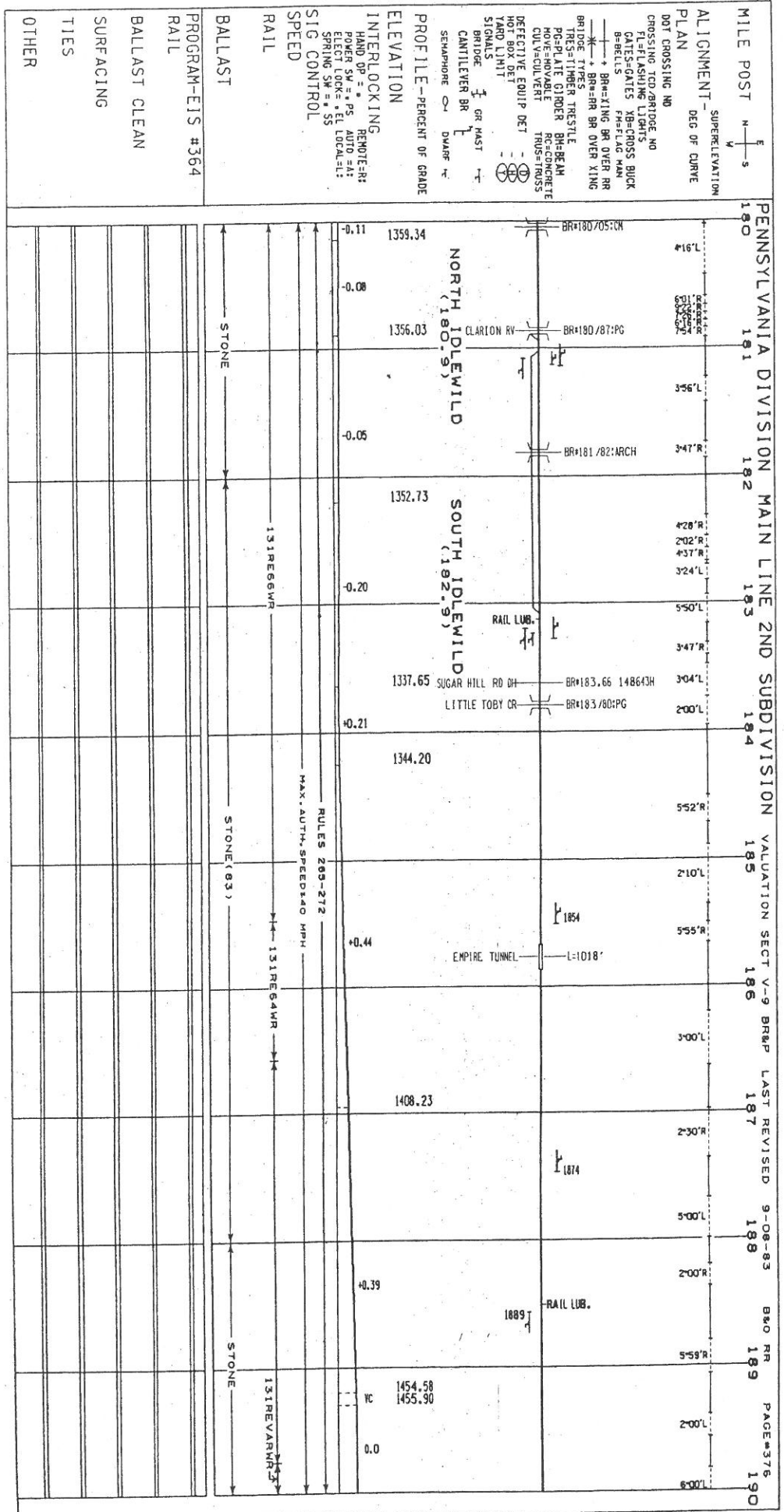
BALLAST
 PROGRAM-EIS #364
 RAIL
 BALLAST CLEAN
 SURFACING
 TIES
 OTHER



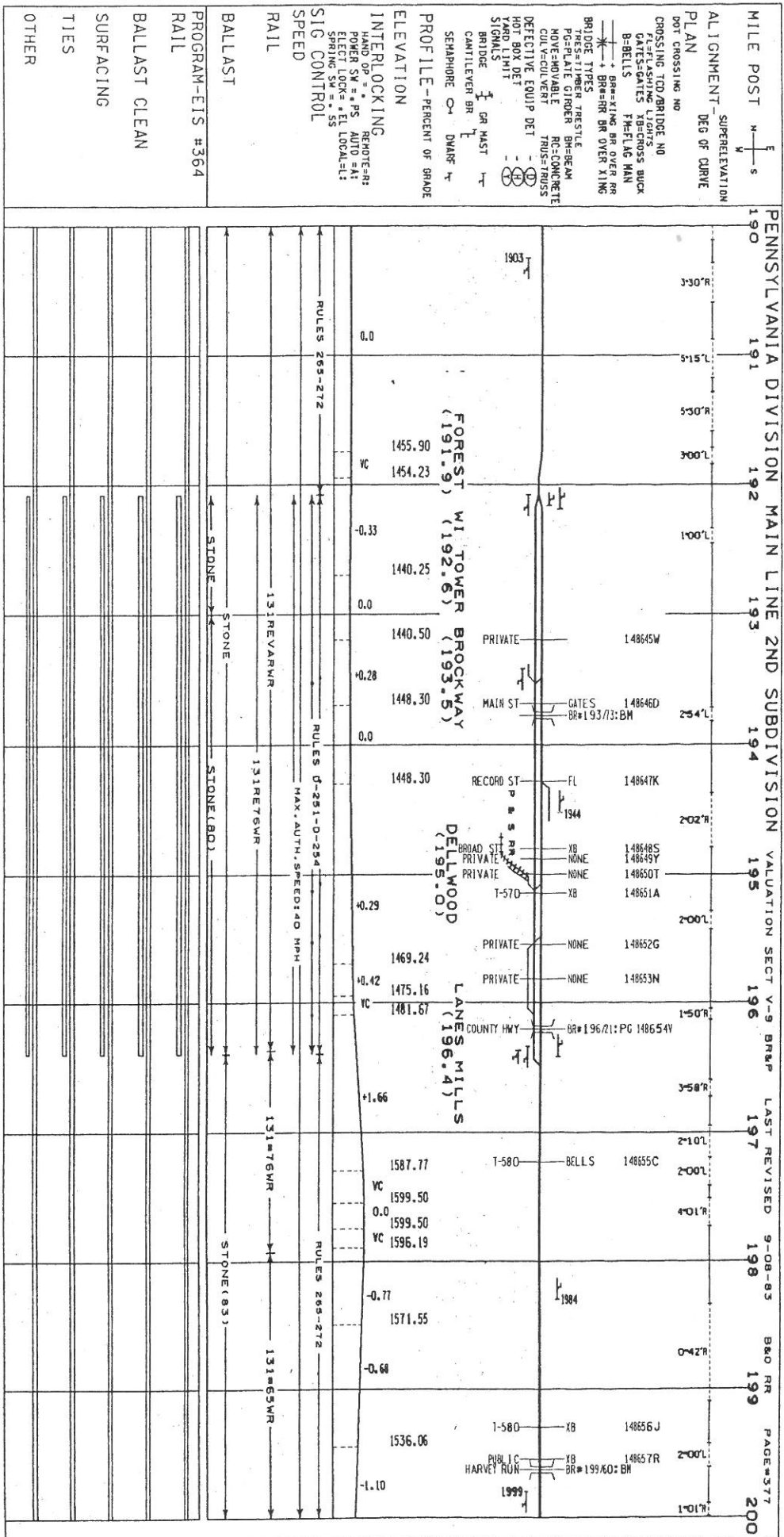




308



SECTION	START	END	ELEVATION	NOTES
180	180+00	180+50	1359.34	NORTH IDLEWILD (180-9)
181	180+50	181+00	1356.03	
182	181+00	182+00	1352.73	SOUTH IDLEWILD (182-9)
183	182+00	183+00	1337.65	SUGAR HILL RD OH LITTLE TOBY CR
184	183+00	184+00	1344.20	EMPIRE TUNNEL
185	184+00	185+00	1408.23	
186	185+00	186+00	1408.23	
187	186+00	187+00	1408.23	
188	187+00	188+00	1408.23	
189	188+00	189+00	1454.58 1455.90	
190	189+00	190+00	0.0	



310

ALIGNMENT SUPERELEVATION
 PLAN DEG OF CURVE

DOT CROSSING NO
 CROSSING TO/BRIDGE NO
 FLASHING LIGHTS
 B-BELLS
 BRIDGE TYPES
 TRUSS-TIMBER TRESTLE
 TRESTLE GIRDER
 MOVE-ABLE
 CUL-VERT
 DEFECTIVE EQUIP DET
 HOT BOX DET
 YARD LIMIT
 SIGNALS
 BRIDGE
 CANTILEVER BR
 SEMAPHORE
 DWARF

BRIDGE TYPES
 TRUSS-TIMBER TRESTLE
 TRESTLE GIRDER
 MOVE-ABLE
 CUL-VERT
 DEFECTIVE EQUIP DET
 HOT BOX DET
 YARD LIMIT
 SIGNALS
 BRIDGE
 CANTILEVER BR
 SEMAPHORE
 DWARF

PROF ELEVATION
 INTERLOCKING
 HAND OP = *
 POWER SW = *
 ELEC LOCK = *
 SPRING SW = *
 REMOTE=RS
 AUTO = A
 LOCAL=L
 SIG CONTROL

RAIL
 BALLAST
 PROGRAM-EIS #364
 RAIL
 BALLAST CLEAN
 SURFACING
 TIES
 OTHER

