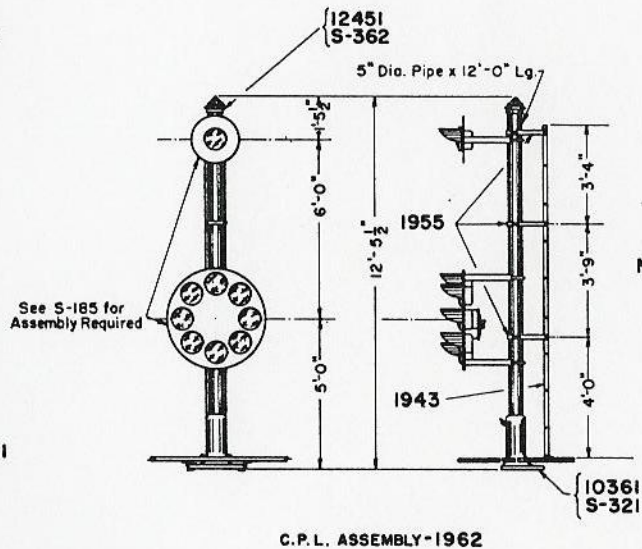
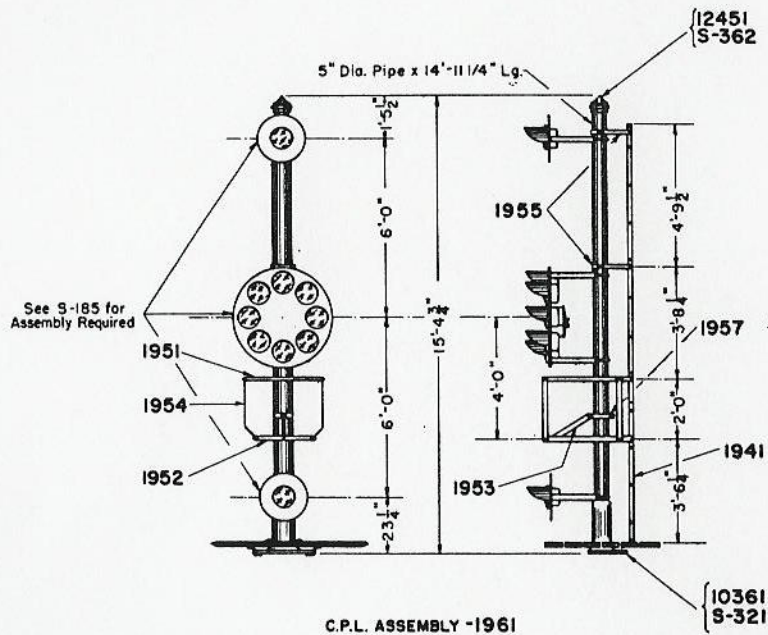


PIPE BRACKET POST COMPLETE FOR 2 SIGNAL MASTS 7'-6" CTRS. AS SHOWN
 (G.R.S. NO. 34751-4, GR. 8, FIG. 1.)-2080

BALTIMORE & OHIO RAILROAD
PIPE BRACKET POST
 Office of Chief Engineer Comm. & Signals
 Baltimore, Md.
 Aug. 23, 1951

Approved: *[Signature]*
 Chief Engr. Comm. & Signal



TYPICAL ORDERING REFERENCE

" _____ Color Position Light High Signal complete
 No.196...Dwg.S-196,with assembly Fig.B-1-5,Dwg.S-185".

" _____ Color Position Light High Signal complete
 No.196...Dwg.S-196,with assembly Fig.B-1-5 having
 30 degree spreadlite lens,Dwg.S-185.

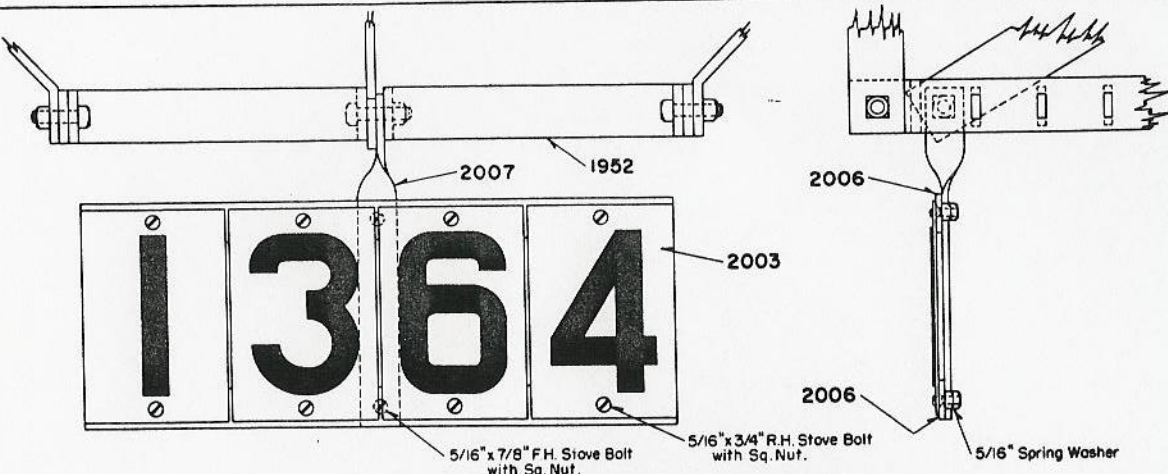
NOTES:

Painting shall be in accordance with Instructions I-134.

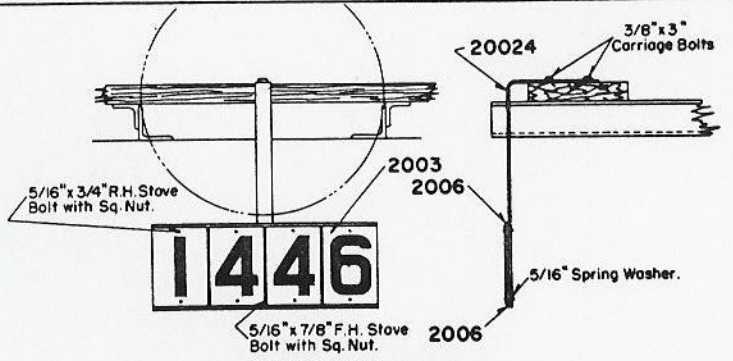
Approved: _____
 Chief Engr. Comm. & Sigs

BALTIMORE & OHIO RAILROAD
**COLOR POSITION LIGHT SIGNALS
 FOR BRACKET POST OR CANTILEVER**

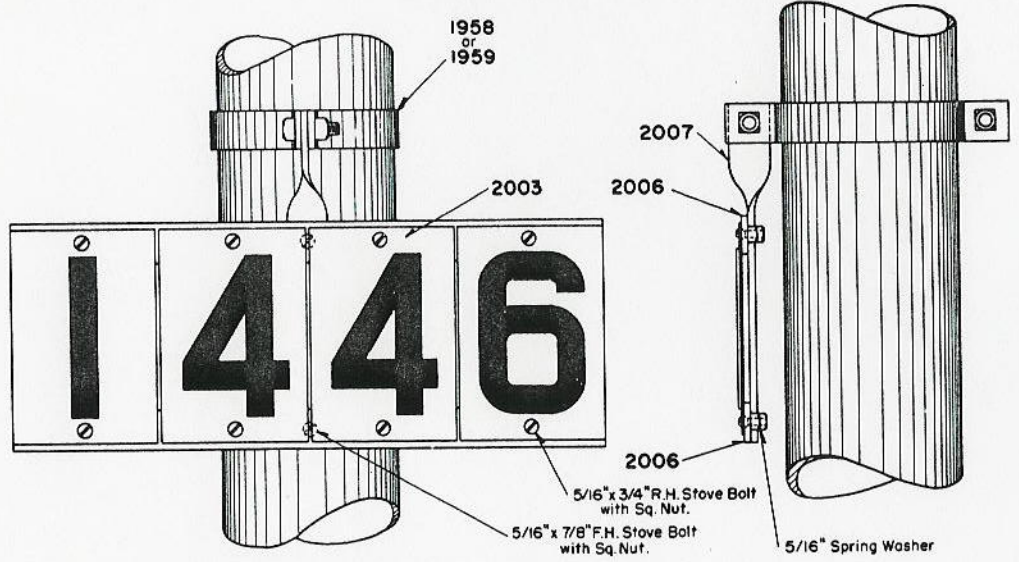
Office of Chief Engineer Comm. & Signals
 Baltimore, Md.
 Nov.30,1949.



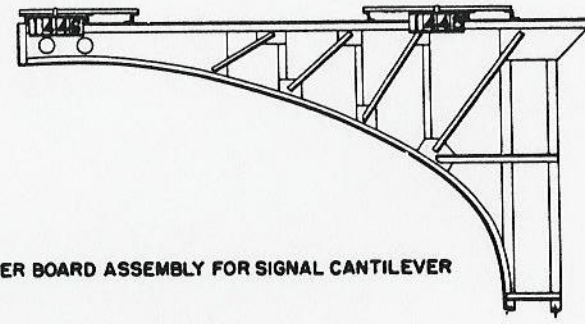
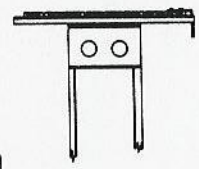
TYPICAL NUMBER BOARD ASSEMBLY FOR C.P.L. SIGNAL
(NO. 20010 SHOWN)



ENLARGED VIEW SHOWING
APPLICATION WHEN PERMISSIVE MARKER IS USED
(NO. 20022 SHOWN)



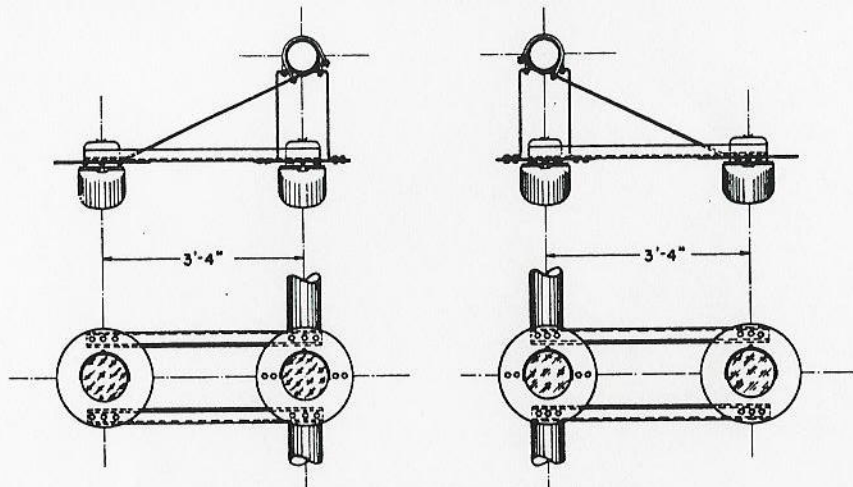
TYPICAL NUMBER BOARD ASSEMBLY FOR SEMAPHORE SIGNALS



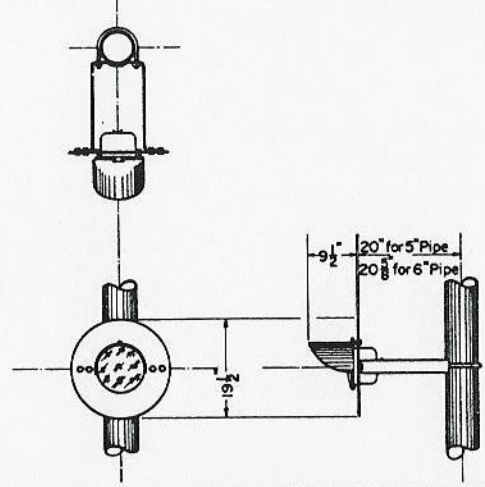
TYPICAL NUMBER BOARD ASSEMBLY FOR SIGNAL CANTILEVER

Approved: *A. S. Henry*
Chief Engr. Comm. & Sigs.

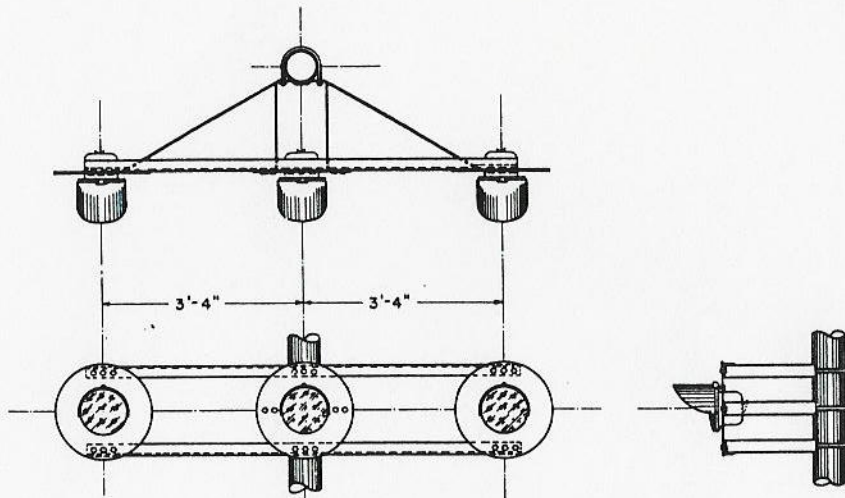
BALTIMORE & OHIO RAILROAD
SIGNAL NUMBER BOARDS
Office of Chief Engineer, Comm. & Signals
Baltimore, Md.
March 1, 1951.



SKETCH SHOWING APPLICATION OF TWO MARKERS
(Top or Bottom)



SKETCH SHOWING APPLICATION OF SINGLE MARKER
(Top or Bottom)

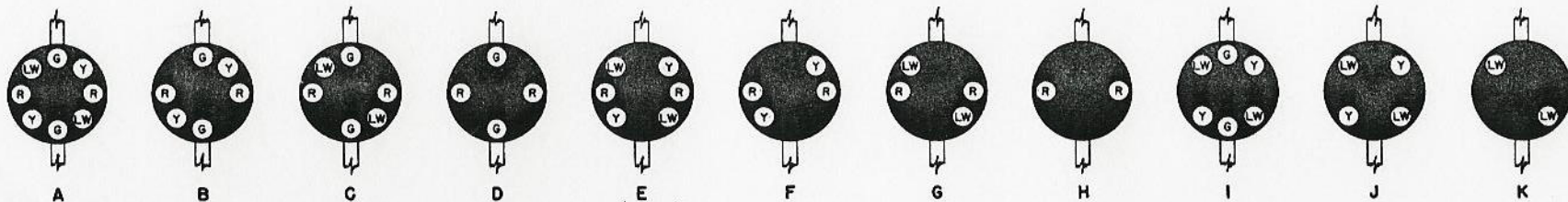


SKETCH SHOWING APPLICATION OF THREE MARKERS
(Top or Bottom)

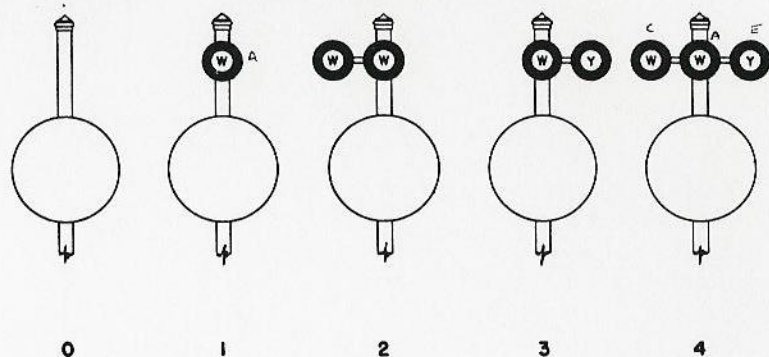
Approved: *Althaus*
Chief Engr. Comm. & Sigs.

BALTIMORE & OHIO RAILROAD
**MARKER LIGHTS FOR
COLOR POSITION LIGHT SIGNALS**
Office of Chief Engineer Comm. & Signals
Baltimore, Md.
Nov. 30, 1949

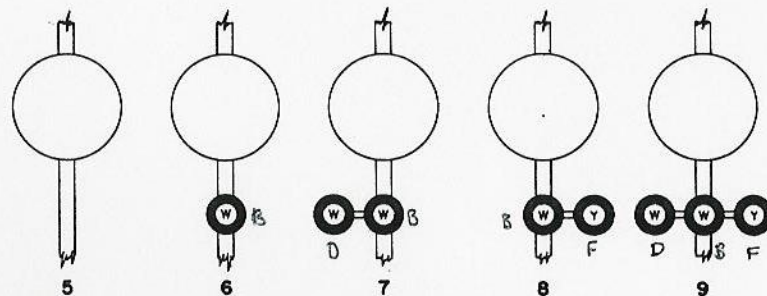
MAIN GROUP



TOP MARKER GROUP



BOTTOM MARKER GROUP



NOTES:

Signals shall conform to A.A.R. Signal Section Specification 162.
Lamp units for high signals installed on tangent track shall have clear outer doublet lens with 40 degree deflecting bullseye.

Lamp units for high signals installed on curved track shall have clear 30 degree outer doublet spreadlite lens with 40 degree flat deflecting roundel.

Marker lamp unit with clear inner doublet lens shall be provided with copper wire screen. See Dwg. S-193-D, sh.1.

Ordering reference for complete signal shall consist of three characters as follows:

- FIRST - Letter designating main group.
- SECOND - Figure designating top marker group.
- THIRD - Figure designating bottom marker group.

TYPICAL ORDERING REFERENCE

Dwarf signal:
" — Dwarf Color Position Light Signal assembly
Fig. B-1-5", Dwg. S-185-B.

High signal for tangent track:
" — High Color Position Light Signal assembly
Fig. B-1-5", Dwg. S-185-B.

High signal for curved track:
" — High Color Position Light Signal assembly
with 30 degree spreadlite lens, Fig. B-1-5,
Dwg. S-185-B.

Approved: A. L. Jordan
Signal Engineer

BALTIMORE & OHIO RAILROAD
ASSEMBLIES OF
COLOR POSITION LIGHT SIGNALS

Office of Signal Engineer
Baltimore, Md.
Sept. 11, 1956.