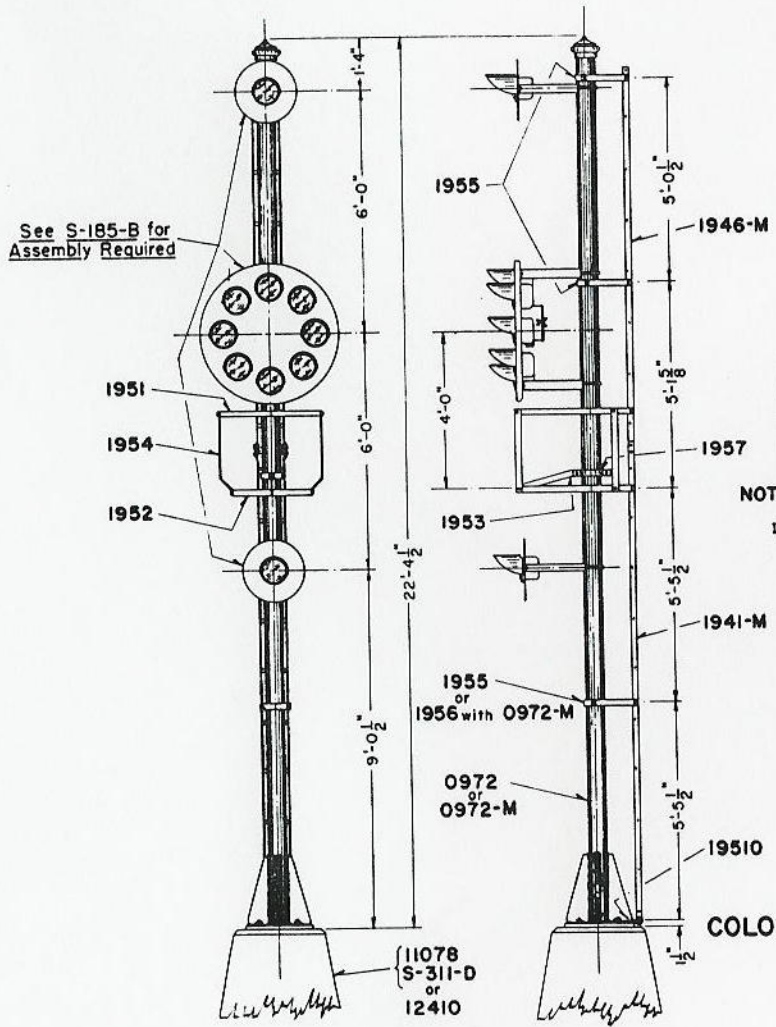


C.P.L. ASSEMBLY - 1972



C.P.L. ASSEMBLY - 1972-M

See S-185-B for Assembly Required

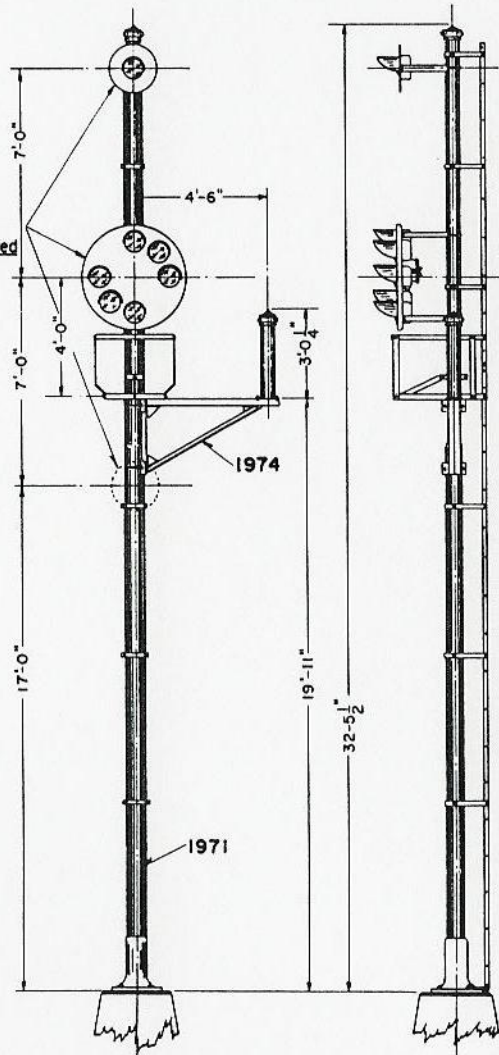
**TYPICAL ORDERING REFERENCE**  
 \* Color Position Light high signal complete No. 197, Dwg. S-197-D, with assembly Fig. B-1-5, Dwg. S-185-B.  
 \* Color Position Light high signal complete No. 197, Dwg. S-197-D, with assembly Fig. B-1-5 having 30 degree spreadlite lens, Dwg. S-185-B.

**NOTES:**  
 Painting shall be in accordance with current instructions I-134.

Approved: *A. L. Jordan*  
 Signal Engineer

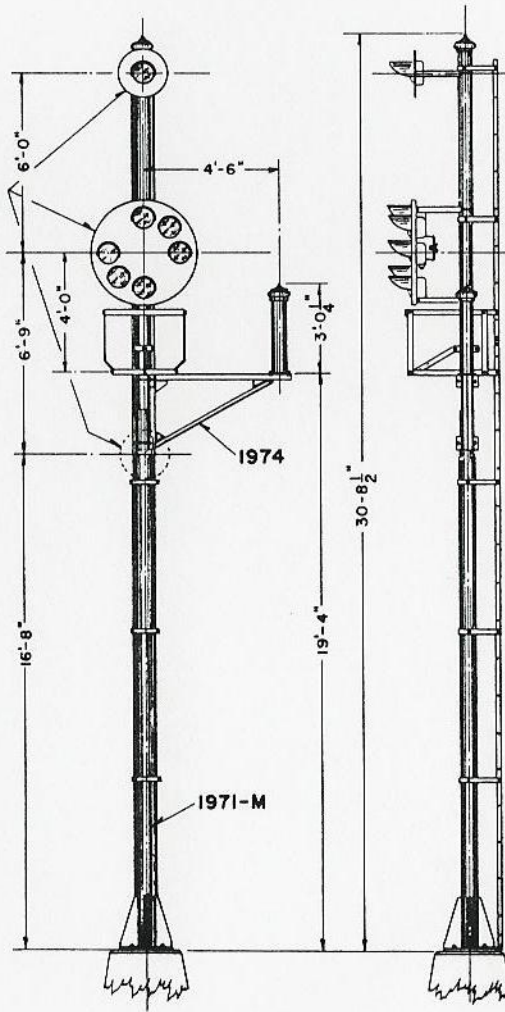
BALTIMORE & OHIO RAILROAD  
**COLOR POSITION LIGHT GROUND SIGNALS**  
 Office of Signal Engineer  
 Baltimore, Md.  
 March 1, 1962

See S-185-B for  
Assembly Required



C. P. L. ASSEMBLY WITH  
CANTILEVER BRACKET-1971-BR

See S-185-B for  
Assembly Required



C. P. L. ASSEMBLY WITH  
CANTILEVER BRACKET-1971-MBR

**TYPICAL ORDERING REFERENCE**

- " \_\_\_\_\_ Color Position Light high signal complete  
No. 197, Dwg. S-197-D, with assembly Fig. B-1-5, Dwg. S-185-B."
- " \_\_\_\_\_ Color Position Light high signal complete  
No. 197, Dwg. S-197-D, with assembly Fig. B-1-5 having  
30 degree spreadlite lens, Dwg. S-185-B.

**NOTES:**

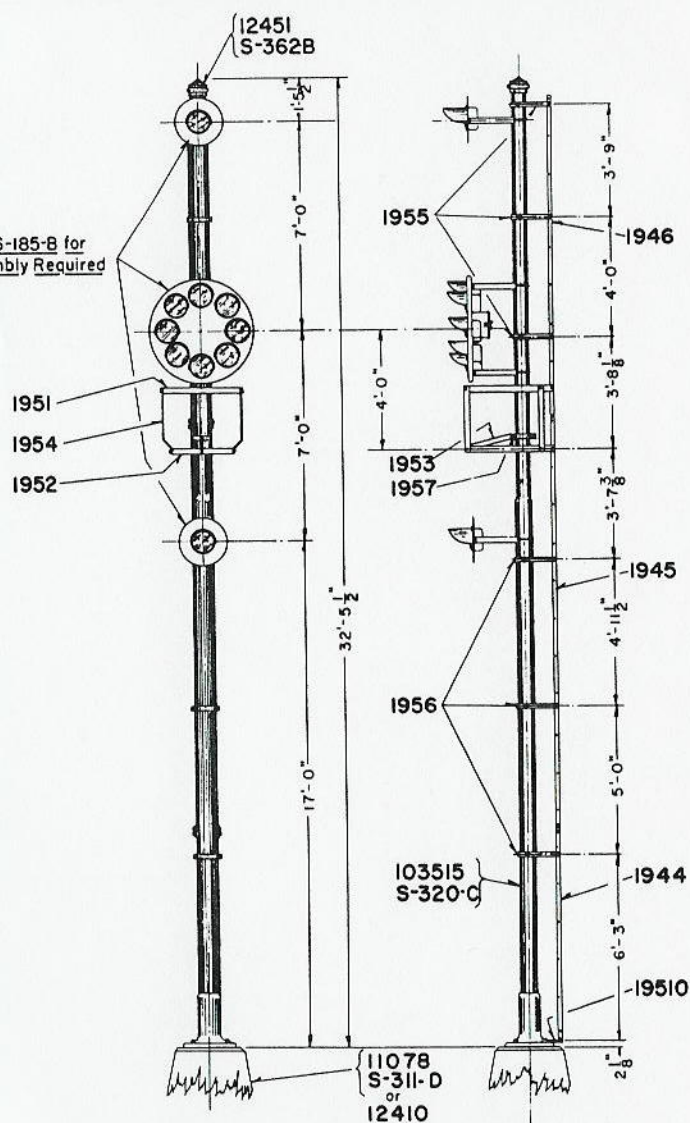
Painting shall be in accordance with current instructions  
I-134.

Approved: *A. L. Jordan*  
Signal Engineer

BALTIMORE & OHIO RAILROAD  
**COLOR POSITION LIGHT GROUND SIGNALS**

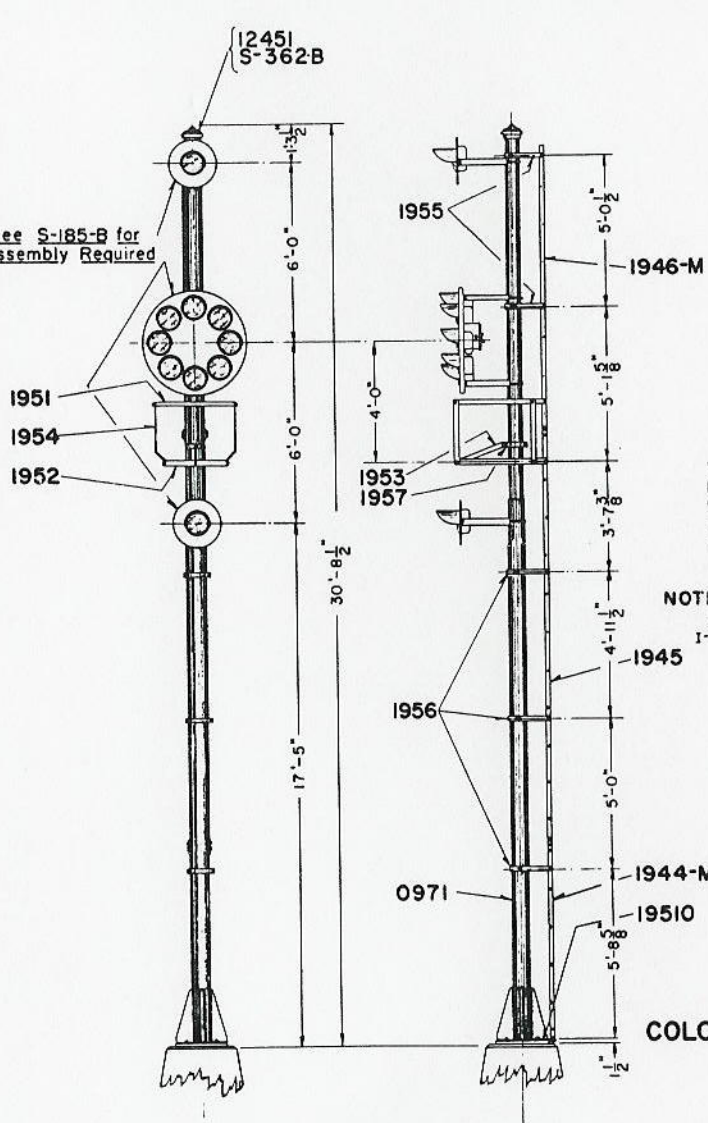
Office of Signal Engineer  
Baltimore, Md.  
March 1, 1962

See S-185-B for  
Assembly Required



C.P.L. ASSEMBLY -1971

See S-185-B for  
Assembly Required



C.P.L. ASSEMBLY -1971-M

**TYPICAL ORDERING REFERENCE**

" \_\_\_\_\_ Color Position Light high signal complete  
No. 197-, Dwg. S-197-B, with assembly Fig. B-1-5, Dwg. S-185-B"  
" \_\_\_\_\_ Color Position Light high signal complete  
No. 197-, Dwg. S-197-B, with assembly Fig. B-1-5 having  
30 degree spreadlite lens, Dwg. S-185-B.

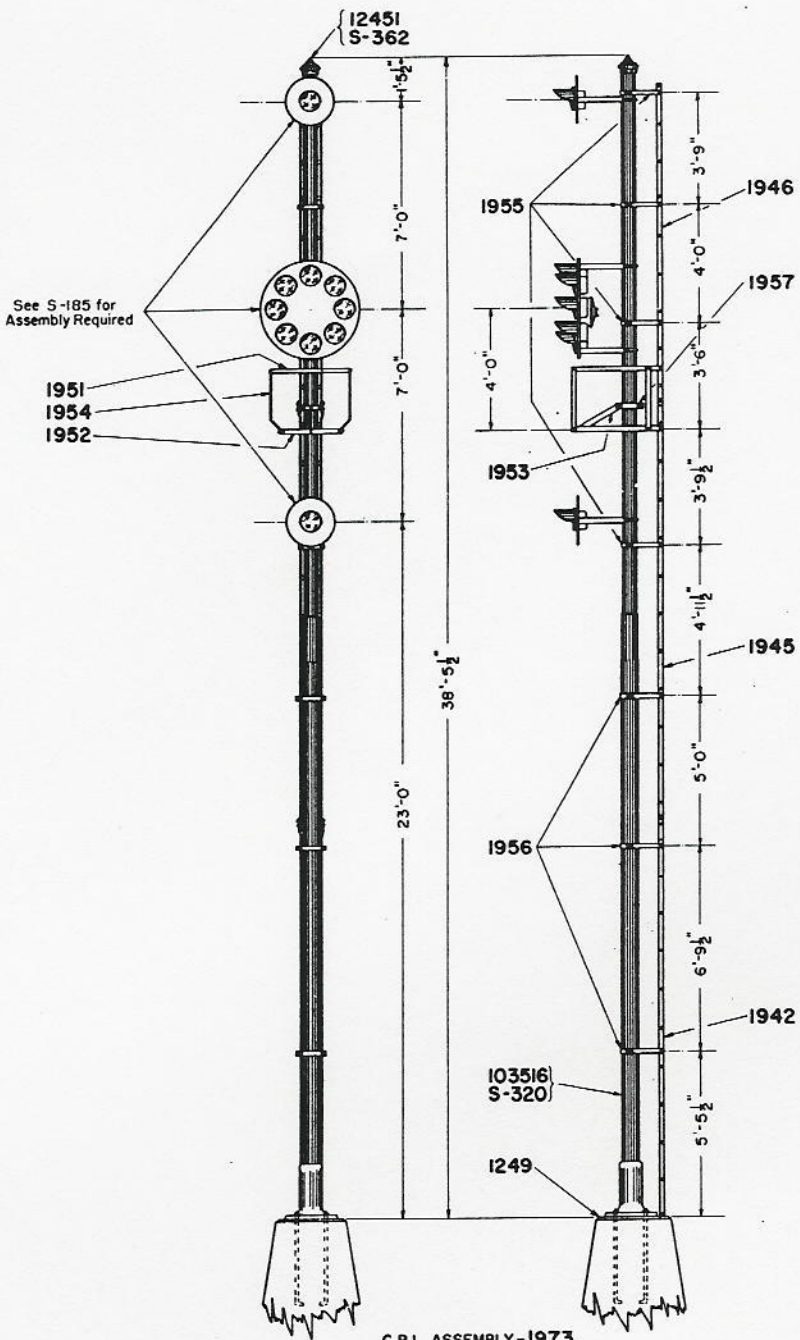
**NOTES:**

Painting shall be in accordance with current instructions  
I-134.

Approved *A. L. Jordan*  
Signal Engineer

**BALTIMORE & OHIO RAILROAD  
COLOR POSITION LIGHT GROUND SIGNALS**

Office of Signal Engineer  
Baltimore, Md.  
March 1, 1962



C.P.L. ASSEMBLY-1973

**NOTES:**

Painting shall be in accordance with instructions I-134.

**TYPICAL ORDERING REFERENCE**

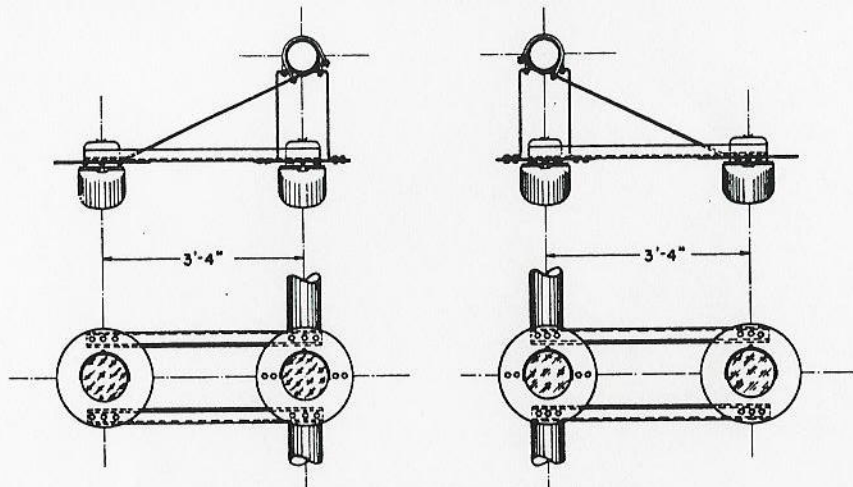
- " Color Position Light high signal complete
- No.197, Dwg S-197, with assembly Fig. B-1-5, Dwg S-185."
- " Color Position Light high signal complete
- No.197, Dwg S-197, with assembly Fig. B-1-5 having
- 30 degree spreadlite lens, Dwg. S-185.

Approved:

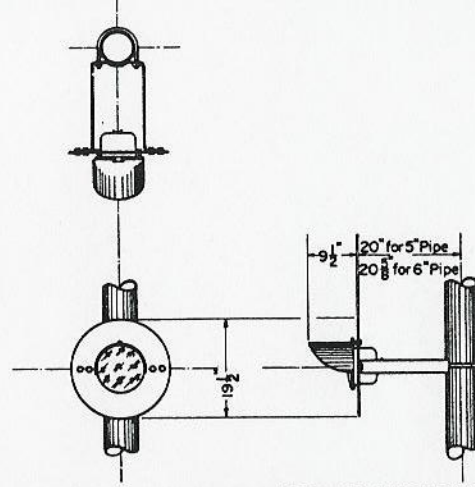
*[Signature]*  
Chief Engr. Comm. & Sigs

**BALTIMORE & OHIO RAILROAD  
COLOR POSITION LIGHT GROUND SIGNALS**

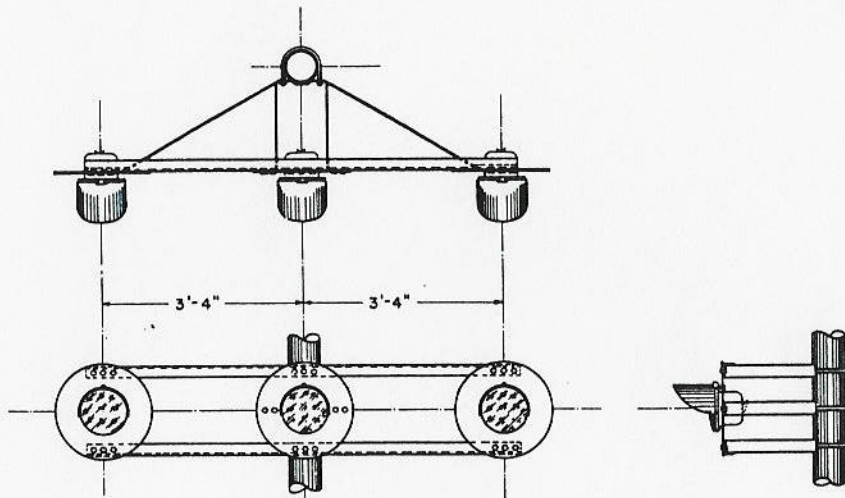
Office of Chief Engineer Comm. & Signals  
Baltimore, Md.  
Nov. 30, 1949



SKETCH SHOWING APPLICATION OF TWO MARKERS  
(Top or Bottom)



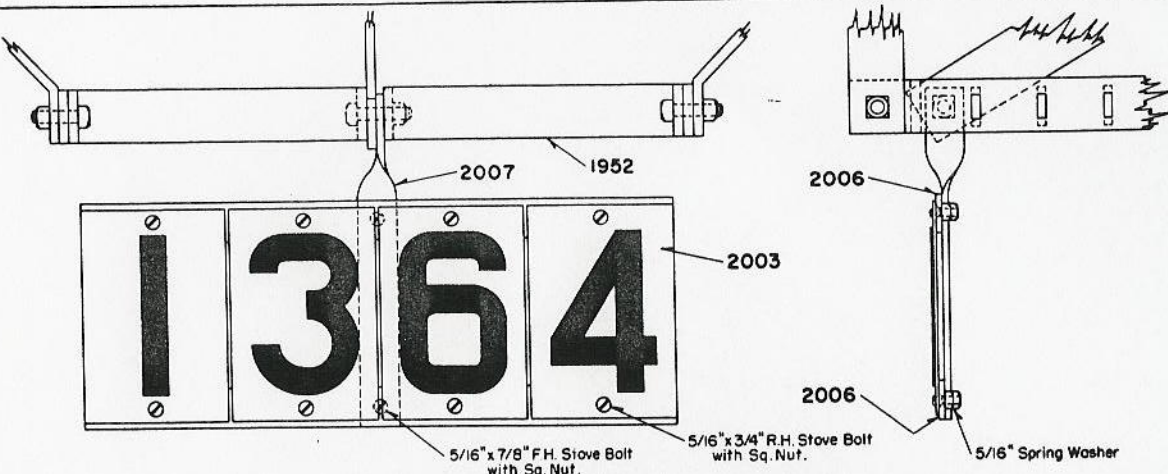
SKETCH SHOWING APPLICATION OF SINGLE MARKER  
(Top or Bottom)



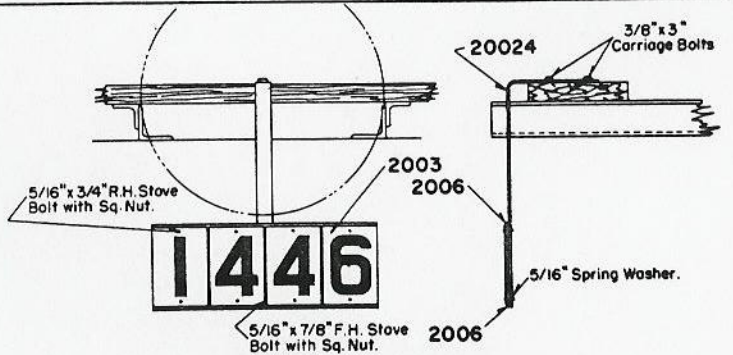
SKETCH SHOWING APPLICATION OF THREE MARKERS  
(Top or Bottom)

Approved: *Althaus*  
Chief Engr. Comm. & Sigs.

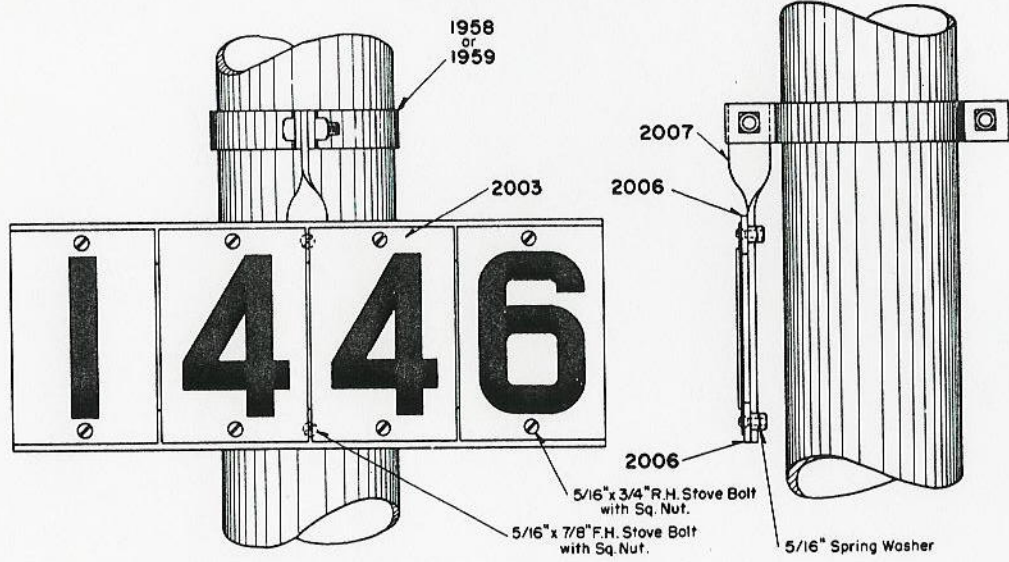
BALTIMORE & OHIO RAILROAD  
**MARKER LIGHTS FOR  
COLOR POSITION LIGHT SIGNALS**  
Office of Chief Engineer Comm. & Signals  
Baltimore, Md.  
Nov. 30, 1949



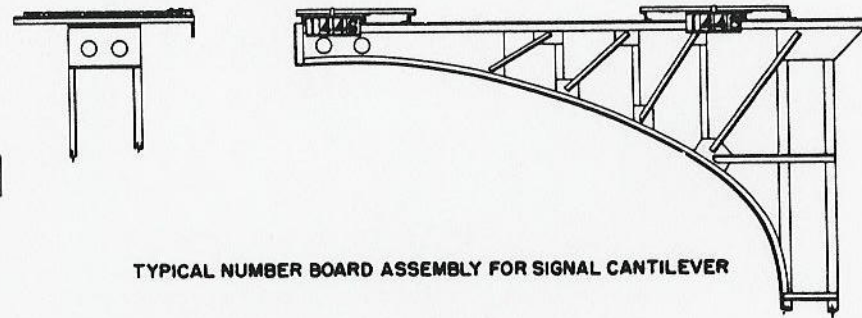
TYPICAL NUMBER BOARD ASSEMBLY FOR C.P.L. SIGNAL  
(NO. 20010 SHOWN)



ENLARGED VIEW SHOWING  
APPLICATION WHEN PERMISSIVE MARKER IS USED  
(NO. 20022 SHOWN)



TYPICAL NUMBER BOARD ASSEMBLY FOR SEMAPHORE SIGNALS

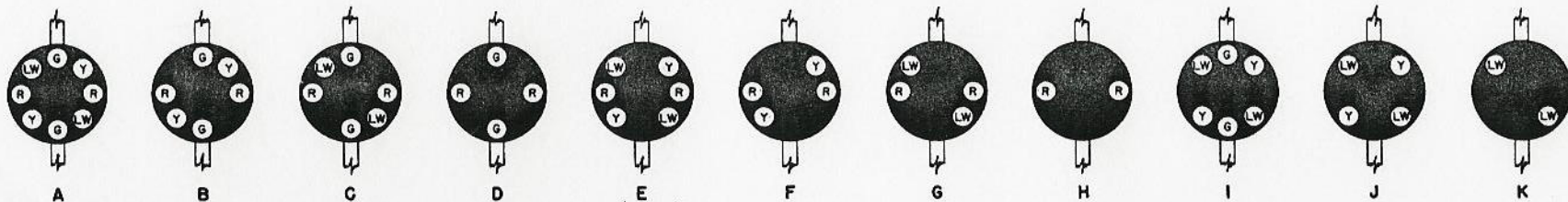


TYPICAL NUMBER BOARD ASSEMBLY FOR SIGNAL CANTILEVER

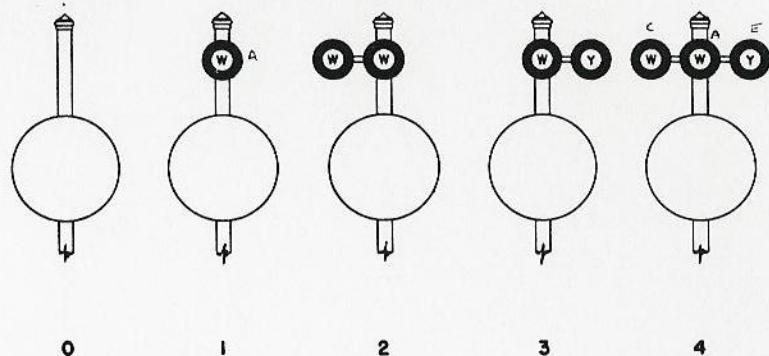
Approved: *A. S. Henry*  
Chief Engr. Comm. & Sigs.

BALTIMORE & OHIO RAILROAD  
**SIGNAL NUMBER BOARDS**  
Office of Chief Engineer, Comm. & Signals  
Baltimore, Md.  
March 1, 1951.

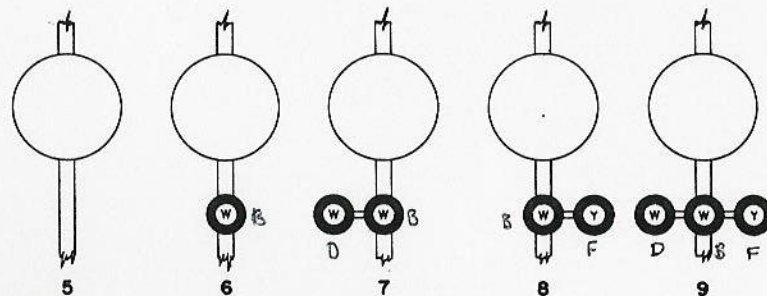
## MAIN GROUP



## TOP MARKER GROUP



## BOTTOM MARKER GROUP



### NOTES:

Signals shall conform to A.A.R. Signal Section Specification 162.  
Lamp units for high signals installed on tangent track shall have clear outer doublet lens with 40 degree deflecting bullseye.

Lamp units for high signals installed on curved track shall have clear 30 degree outer doublet spreadlite lens with 40 degree flat deflecting roundel.

Marker lamp unit with clear inner doublet lens shall be provided with copper wire screen. See Dwg. S-193-D, sh.1.

Ordering reference for complete signal shall consist of three characters as follows:

FIRST - Letter designating main group.

SECOND - Figure designating top marker group.

THIRD - Figure designating bottom marker group.

### TYPICAL ORDERING REFERENCE

Dwarf signal:  
" — Dwarf Color Position Light Signal assembly  
Fig. B-1-5", Dwg. S-185-B.

High signal for tangent track:  
" — High Color Position Light Signal assembly  
Fig. B-1-5", Dwg. S-185-B.

High signal for curved track:  
" — High Color Position Light Signal assembly  
with 30 degree spreadlite lens, Fig. B-1-5,  
Dwg. S-185-B.

Approved: A. L. Jordan  
Signal Engineer

**BALTIMORE & OHIO RAILROAD**  
**ASSEMBLIES OF**  
**COLOR POSITION LIGHT SIGNALS**

Office of Signal Engineer  
Baltimore, Md.  
Sept. 11, 1956.